

**80/20<sup>®</sup> Inc.**

# WORKSPACE

## BARRIER GUIDE



Custom Temporary  
and Permanent  
PPE Solutions



# TABLE OF CONTENTS

## What's Your Barrier Need?

As people continue to re-enter the workforce and other public spaces, safety is more important than ever. Social distancing is not always possible. Barrier options that keep us apart but still a part of daily interactions are crucial for protecting yourself and others from the spread of harmful viruses and bacteria.

Whether you need portable, temporary, fixed, or permanent solutions, 80/20 has the ideal custom application for your workspace. In this informative guide, you will discover the most common 80/20 parts used to create effective barrier solutions.

### Quick Reference Guide

#### Barrier Kits

Sneeze Barriers.....	3
----------------------	---

#### Profiles


T-Slot Profiles .....	4
Quick Frame Profiles .....	5

#### Panels & Hinges

Panel Selection .....	6
Connector Clips .....	7
Saloon Hinges .....	7
Plastic Panel Hinges .....	8
PVC Panel Hinges .....	8
PVC Panel Anchors .....	8

#### Accessories

End Caps .....	9
Gasket .....	9
T-Slot Cover .....	10
VHB Tape .....	10

www.8020.net 

260.248.8030 

Copyright © 2020 80/20® Inc. All rights reserved





## Sneeze Barriers

Mount transparent panels onto aluminum feet or eliminate machining by using acrylic feet to create a freestanding barrier, with or without pass-through. Maintain optical clarity with clear paneling, or opt for gray or bronze tint to reduce glare and provide additional privacy. All panel edges are rounded for safety.

Height x Width	Pass-Thru	Guard Feet	Quote No.
24" x 24" (23.75"x23.75")	With	Acrylic	Q-77153
		Aluminum	Q-77154
	Without	Acrylic	Q-77155
		Aluminum	Q-77156
24" x 36" (23.75"x36")	With (36" Side)	Acrylic	Q-77157
		Aluminum	Q-77158
	Without	Acrylic	Q-77159
		Aluminum	Q-77160
24" x 48" (23.75"x47.75")	With (48" Side)	Acrylic	Q-77161
		Aluminum	Q-77162
	Without	Acrylic	Q-77163
		Aluminum	Q-77164
30" x 36"	With (36" Side)	Acrylic	Q-77165
		Aluminum	Q-77166
	Without	Acrylic	Q-77167
		Aluminum	Q-77168
36" x 48" (36"x47.75")	With (48" Side)	Acrylic	Q-77169
		Aluminum	Q-77170
	Without	Acrylic	Q-77171
		Aluminum	Q-77172

The sneeze guards are made with P/N 2601 (.220") acrylic panels, aluminum feet (x4) and VHB tape or acrylic feet (x2) depending on your choice. Pass-Through measurements on all guards are: 4"h x 12"w.

Guard Feet	Part No.
2601 Acrylic feet (x2)	1P13452
Aluminum (x4), VHB Tape (x10)	1P13454
Acrylic Foot Slot Machining (x2)	1P13478



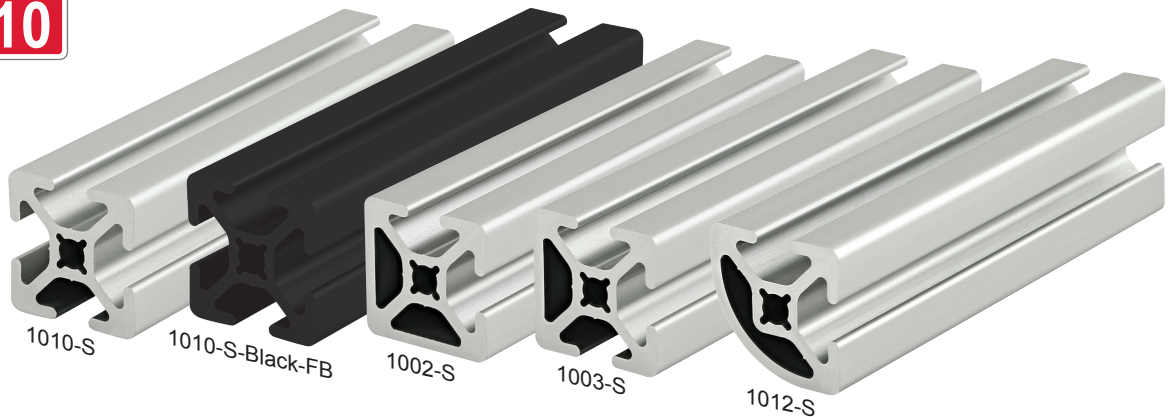
## Profile Options

T-slot and quick frame aluminum profiles create easy to mount lightweight frames. Offered in both metric and fractional, T-slot profiles come in a wide range of series sizes and shapes. The smooth-faced surface options allow for easier-to-clean surfaces, as do closed-face square, radius, and angle shapes.

### 10 Series Profiles

**10**

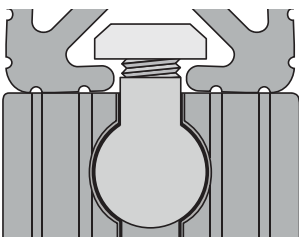
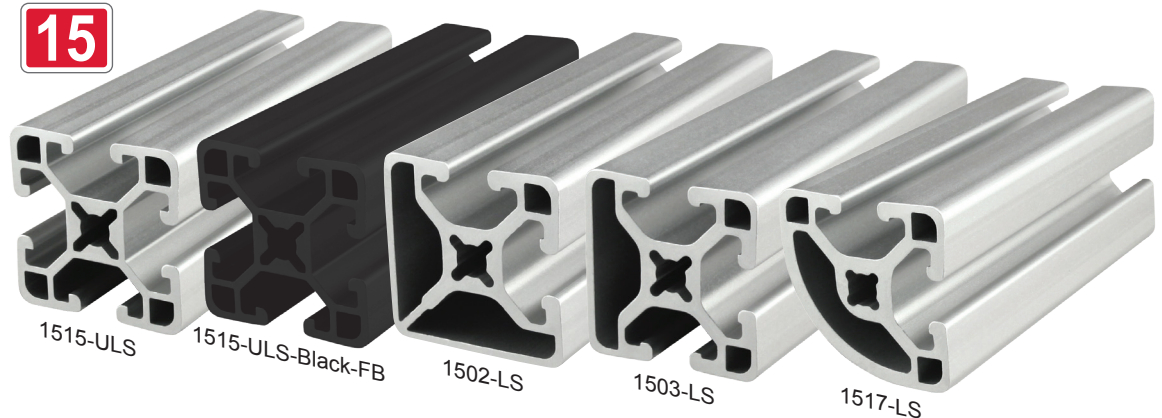
Part No.
1010-S *
1010-S-Black-FB
1002-S *
1002-S-Black-FB
1003-S *
1003-S-Black-FB
1012-S *
1012-S-Black-FB



### 15 Series Profiles

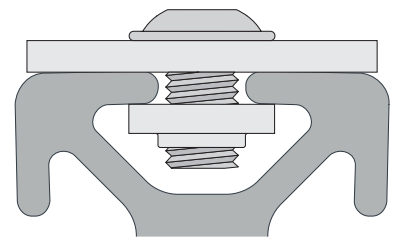
**15**

Part No.
1515-ULS *
1515-ULS-Black-FB
1502-LS *
1502-LS-Black-FB
1503-LS *
1503-LS-Black-FB
1517-LS *
1517-LS-Black-FB


**External Fasteners**

### Suggested Fasteners

Both external and internal fasteners are common, strong fastening options for both machined and non-machined T-slot profiles. For a full listing, refer to the product catalog or talk with an 80/20 specialist.

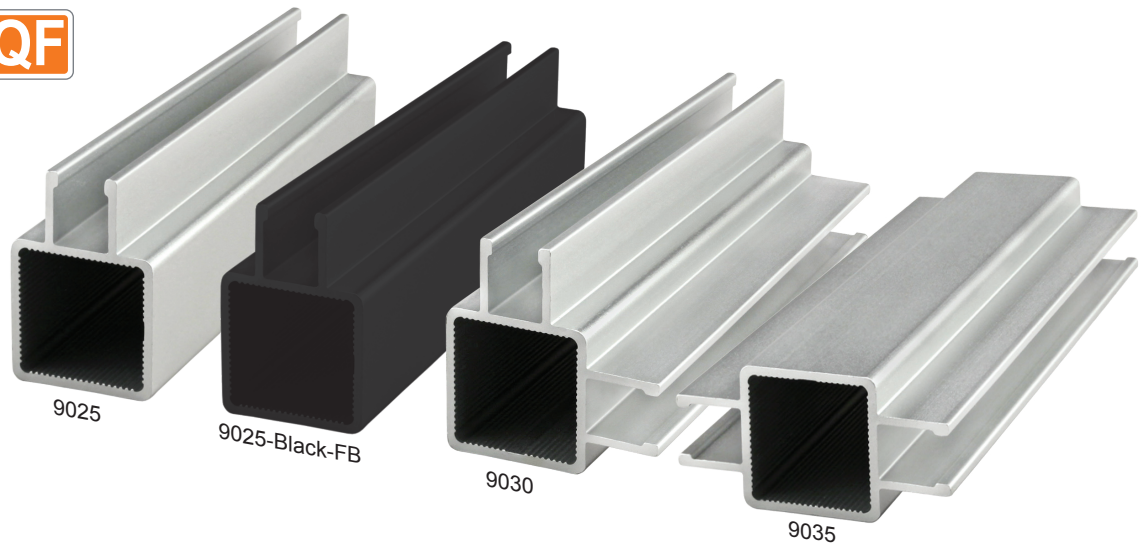

**Internal Fasteners**



### Quick Frame Profiles



Quick frame profiles are simple to use, lightweight, and provide a cost-effective alternative to T-slot profiles. Twin-flanged profiles are typically used to hold paneling, whereas the square profile is used to frame light-duty applications.

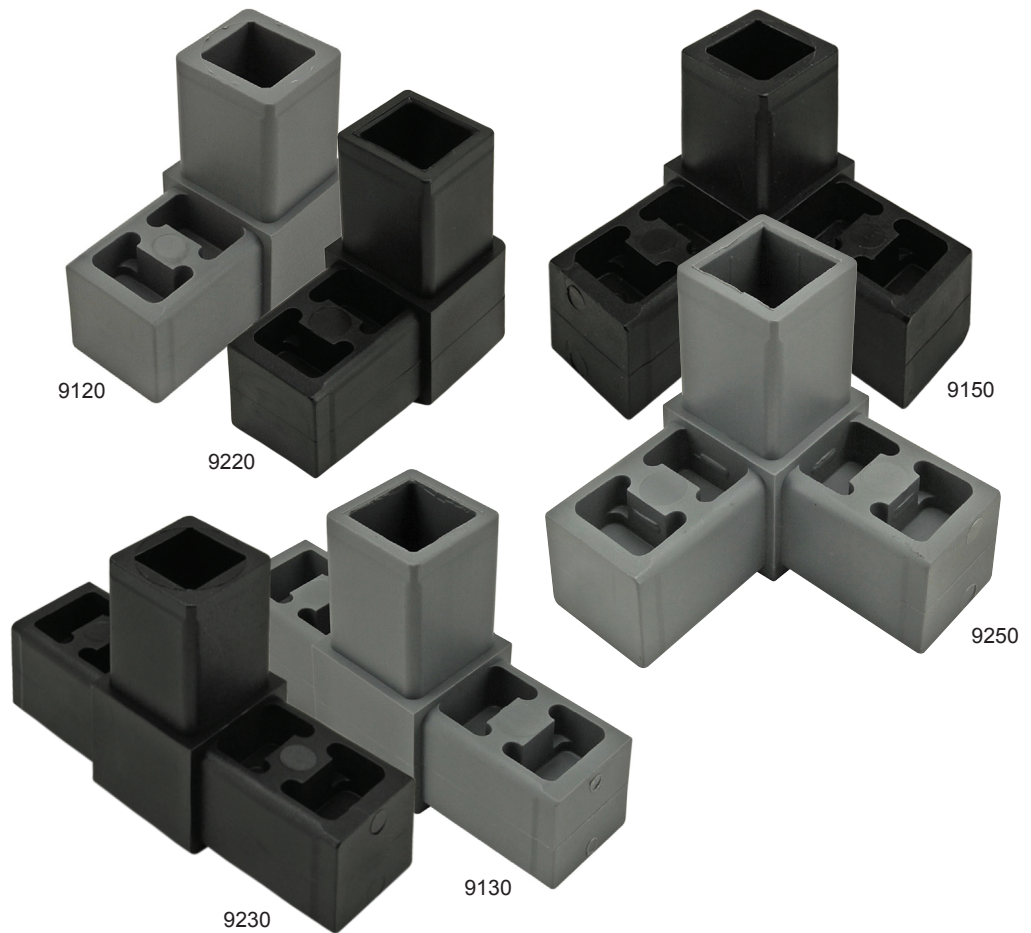


Part No.
9025 *
9025-Black-FB
9030 *
9030-Black-FB
9035 *
9035-Black-FB



### Quick Frame Fasteners

Quick frame requires no machining, just nylon tube inserts that connect with a simple soft-faced mallet. The connectors come in both black and gray to match profile color.



Part No.	Color
9120	Gray
9220	Black
9130	Gray
9230	Black
9150	Gray
9250	Black



## Panel Selection

Panels come in a variety of acrylic and polycarbonate options. Both clear and tinted panels are strong enough to withstand daily deep cleanings and exposure to UV rays, and are easily mounted without breaking. Clear paneling maintains optical clarity; gray- and bronze-tinted options reduce glare and provide additional privacy. All panel edges are rounded for safety.

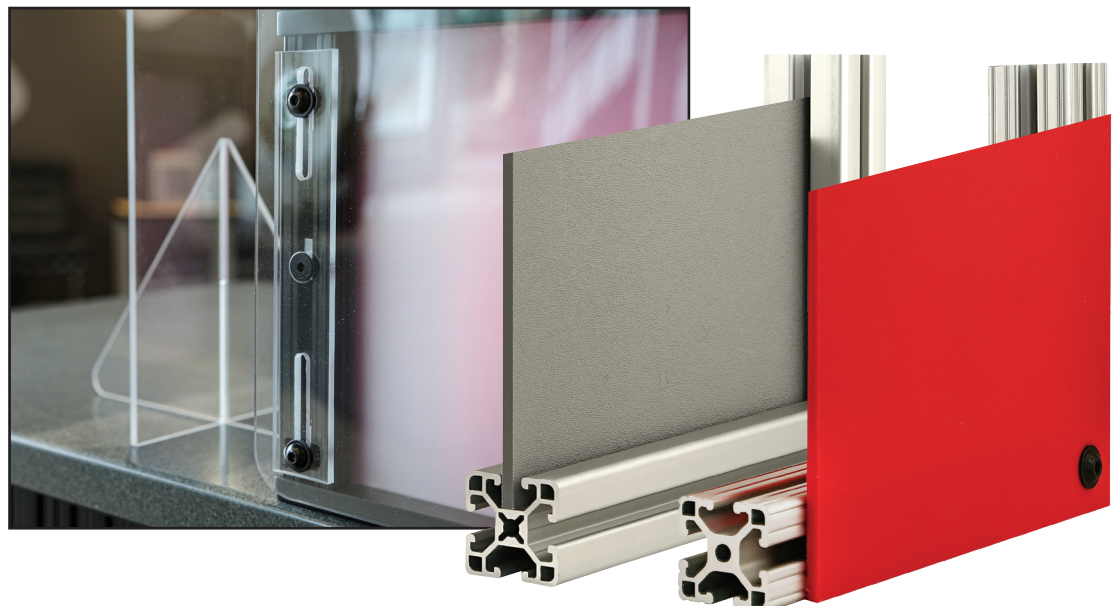


Part No.	Panel Type
2601	Clear Acrylic
2607	Bronze Acrylic
2642	Clear AR Polycarbonate
2609	Clear Polycarbonate
2611	Bronze Polycarbonate
2629	Gray Polycarbonate
2646	Recycled Polycarbonate

**80/20 Recommendation:** Acrylic panels are resistant to many common chemical cleaning agents and withstand repeated cleanings, making it a more favorable panel choice for sneeze guard designs.

## How Panels Are Used with T-Slot

T-slots allow for an infinite number of panel mountings and repositionings along the profile. Panels can either rest inside the T-slot groove or be mounted flush with the T-slot profile. Guarding, enclosures, and access points lend themselves well to panels that rest within the profile, whereas desks and furniture applications commonly have flush panels.

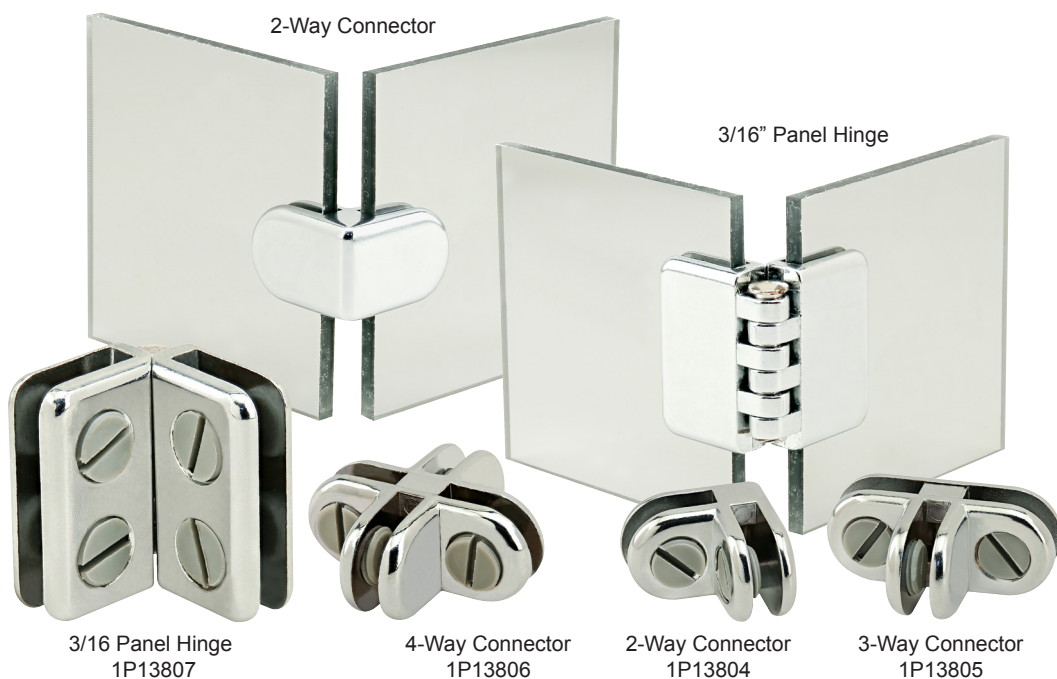




### Connector Clips

The connector clips provide a strong, fixed connection between one or more panels. They eliminate the need for profiles, allowing for more visibility when used with clear panels for displays and protective screens.

The clips also provide an ideal solution for use with solid panels to create temporary partitions between workspaces. Connector clips are often commonly paired with plastic panel hinges to create a clean, finished look.



### Saloon Hinges

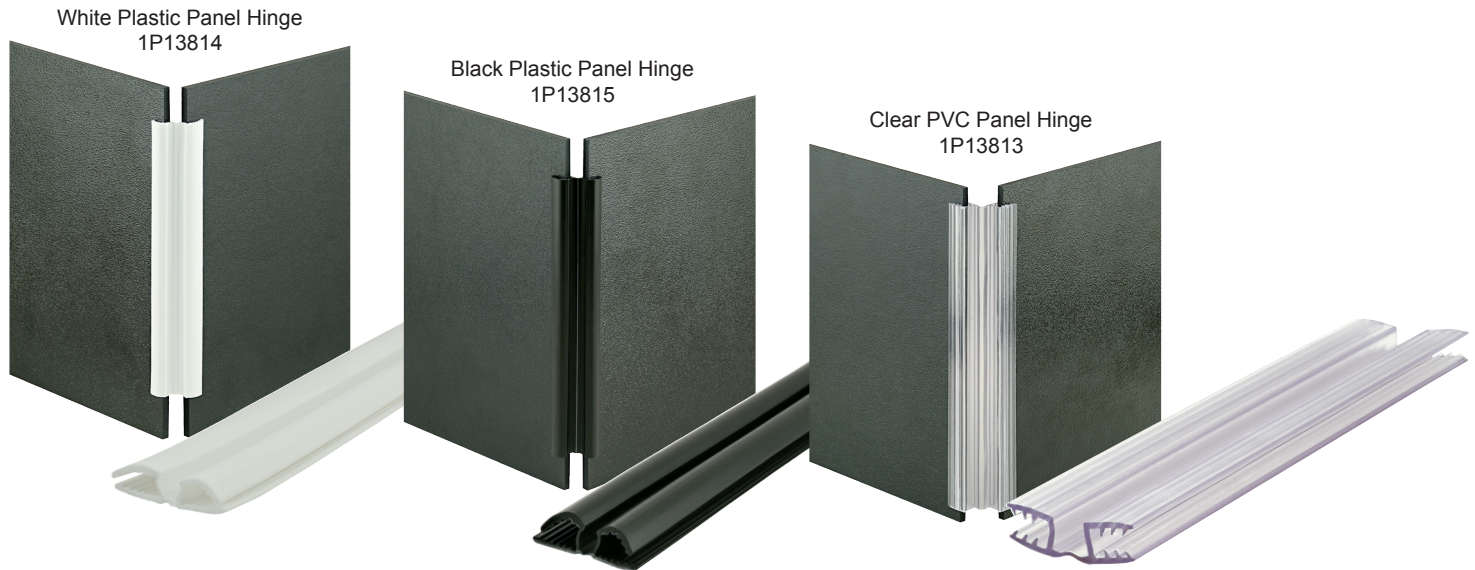
The saloon hinges provide an easy to open feature for pass thru gates and doors. They eliminate the need for door handles and openers, using gravity to smoothly swing in both directions. By allowing for hands-free use, these hinges may reduce the spread of germs on application surfaces. The easy to adjust tension pin also lowers the overall stress on an application.





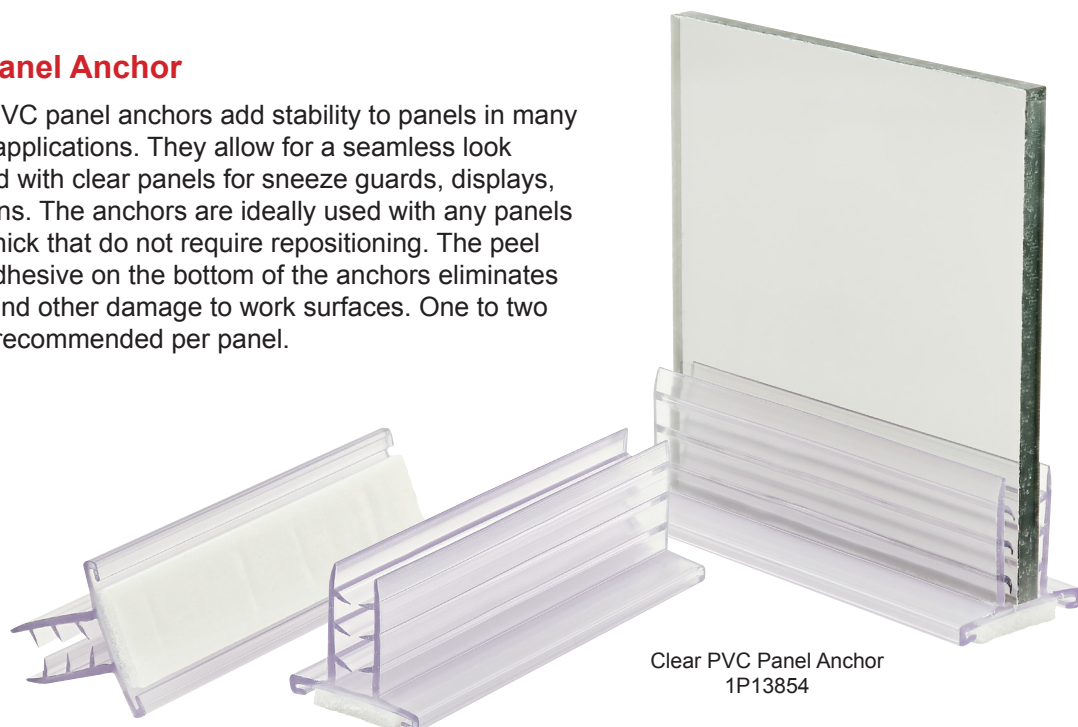
### Plastic & PVC Panel Hinges

The plastic panel hinges provide a flexible connection between panels that allows for 45 to 180 degrees of positioning. They are ideal to create repositionable, temporary workspace partitions. Made from 4ft sections of opaque white, black polypropylene plastic and clear PVC, these hinges can be used with panels up to 1/4" thick. These sections can be easily cut with a utility knife or heavy duty scissors to accommodate custom needs. Plastic panel hinges are commonly used with connector clips to create a clean, finished look. PVC panel hinges are commonly paired with PVC panel anchors to create fixed applications for tabletops or desks.



### Plastic Panel Anchor

The clear PVC panel anchors add stability to panels in many workplace applications. They allow for a seamless look when paired with clear panels for sneeze guards, displays, and partitions. The anchors are ideally used with any panels up to 1/4" thick that do not require repositioning. The peel and stick adhesive on the bottom of the anchors eliminates scratches and other damage to work surfaces. One to two anchors is recommended per panel.







## Finish Your Frame

Whether your barrier is full-length, partial, or an extension of an existing barrier, there are multiple ways to create a barrier with added safety benefits. End caps, T-slot covers, and panel gaskets create smoother surfaces for cleaning. VHB tape is an alternative to hardware that is strong enough to hold panels and other products in place.

### End Caps

End caps with a push-in fastener add a finishing touch to projects and close off profile ends to limit dust and debris buildup. They are installed with either a push-in fastener or self-tapping screw, or into a tapped hole using a button head socket cap screw.



Square Profile  
End Caps

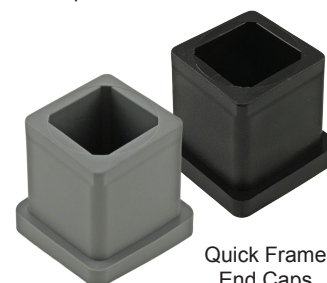
Square Profile End Caps						
80/20 Black Cap	Red Cap	Blue Cap	Yellow Cap	Gray Cap	Black Cap	Series
2015	2015RED	2015BLU	2015YEL	2015GRA	2015-Plain	10
2025	2025RED	2025BLU	2025YEL	2025GRA	2025-Plain	10
2026	2026RED	2026BLU	2026YEL	2026GRA	2026-Plain	10
2028	2028RED	2028BLU	2028YEL	2028GRA	2028-Plain	10
2030	2030RED	2030BLU	2030YEL	2030GRA	2030-Plain	15
2045	2045RED	2045BLU	2045YEL	2045GRA	2045-Plain	15
2046	2046RED	2046BLU	2046YEL	2046GRA	2046-Plain	15
2050	2050RED	2050BLU	2050YEL	2050GRA	2050-Plain	15



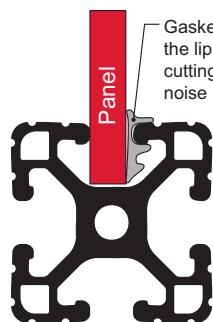
Rounded Profile  
End Caps

Rounded Profile End Caps						
80/20 Black Cap	Red Cap	Blue Cap	Yellow Cap	Gray Cap	Black Cap	Series
2022	2022RED	2022BLU	2022YEL	2022GRA	2022-Plain	10
2035	2035RED	2035BLU	2035YEL	2035GRA	2035-Plain	15

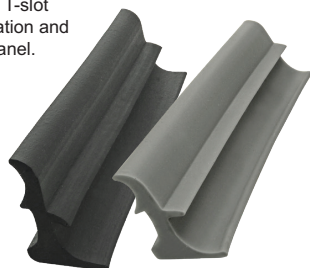
Quick Frame End Caps	
Part No.	Series
9110	QF
9210	QF



Quick Frame  
End Caps



Gasket wraps firmly around the lip of the profile's T-slot cutting down on vibration and noise made by the panel.



### Panel Gasket

Panel gasket adds a sleek finishing touch to projects. Use it to eliminate gaps in coverage and to secure panels within a frame.

Part No.	Series	Material	Color
2116	10	Thermoplastic Elastomer	Black
2118	10	Thermoplastic Elastomer	Black
2177	10	Silicone Rubber	Gray
2115	15	Thermoplastic Elastomer	Black
2117	15	Thermoplastic Elastomer	Black
2178	15	Silicone Rubber	Gray

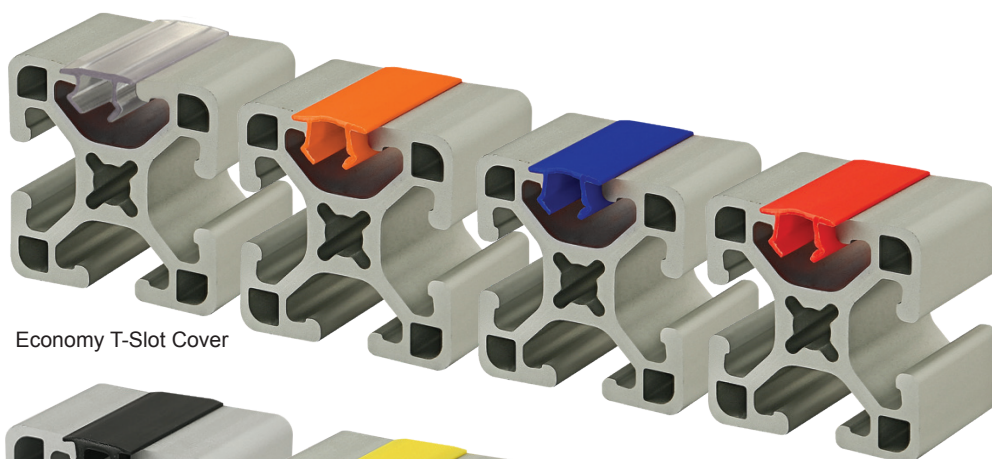


## T-Slot Cover

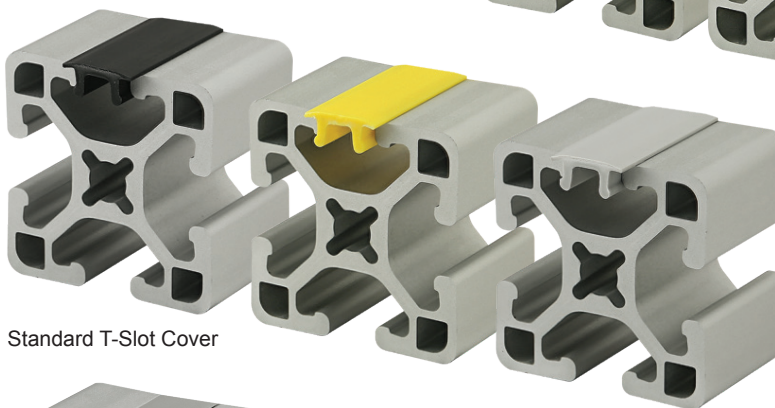
T-slot covers add a colorful, polished look to applications. Covers prevent dust and debris build up and cover wires and tubes in the T-slot channel. Select from a variety of color options, such as black, gray, clear, red, blue, orange, or safety yellow.

Economy T-Slot Cover			
Part No.	Series	Color	Material
2819	10	Yellow	PVC
2820	10	Black	
2821	10	Gray	
2818	10	Red	
2817	10	Blue	
2816	10	Orange	
2822	15	Yellow	
2823	15	Black	
2824	15	Gray	
2825	15	Red	
2826	15	Blue	
2827	15	Orange	
2871	15	Clear	

Standard T-Slot Cover			
Part No.	Series	Color	Material
2112	10	Yellow	PVC
2113	10	Black	
2114	10	Gray	
2109	15	Yellow	Polypropylene
2110	15	Black	
2111	15	Gray	



Economy T-Slot Cover



Standard T-Slot Cover



Aluminium T-Slot Cover

Aluminum T-Slot Cover		
Part No.	Series	Color
2119	15	Clear
2119-Black	15	Black

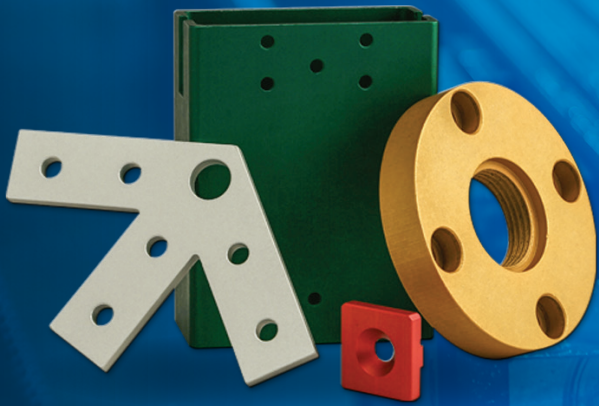
## VHB Tape

This tabletop mounting tape is a high-strength bonding method that is easy to use and provides long-lasting durability. The 3M™ VHB™ double-sided tape adheres to a wide variety of materials and is commonly used to mount a tabletop work surface horizontally, as it eliminates the need for machining. The pressure-sensitive adhesive bonds on contact. Please note: this product is sold in packs of 10 pieces.

Part No.	Series	Material	Color
13099	F	Acrylic	White





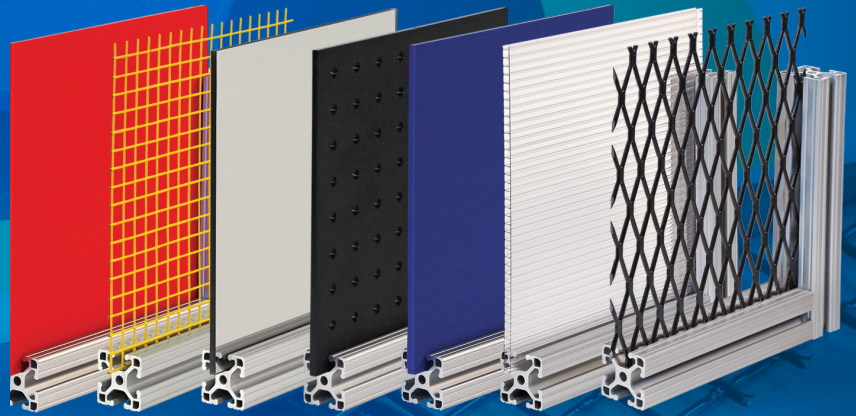


## CUSTOM **MACHINING**

MODIFY OR CREATE  
ALL NEW PARTS

## PANEL **SHOP**

OVER 100 PANEL TYPES  
MACHINED IN-HOUSE



## 80/20 **BUILDS**

SAVE TIME & LABOR  
LET US BUILD IT FOR YOU



## CUSTOM **PACKAGING**

KITTING, BAR-CODING, PART-  
TAGGING, BUBBLE WRAPPING

