

QTS TWIN SCREW PUMP

Ampco Pumps

QTS Series

Q-Pumps
A Black & Veatch Company



Introducing Ampco's

QTS TWIN SCREW PUMP

The latest addition to the extensive and innovative positive displacement pump offering from Ampco Pumps Company. The QTS was engineered for gentle handling of viscous products and media with larger soft particulates. The QTS is manufactured with a robust design to provide durability, quiet operation and virtually pulsation-free pumping. The QTS standard offering includes added features that make this pump the best value in the industry today. Replacement parts are in stock and attractively priced.

The QTS is a dual duty pump that can be applied for both process and CIP requirements.

BENEFITS

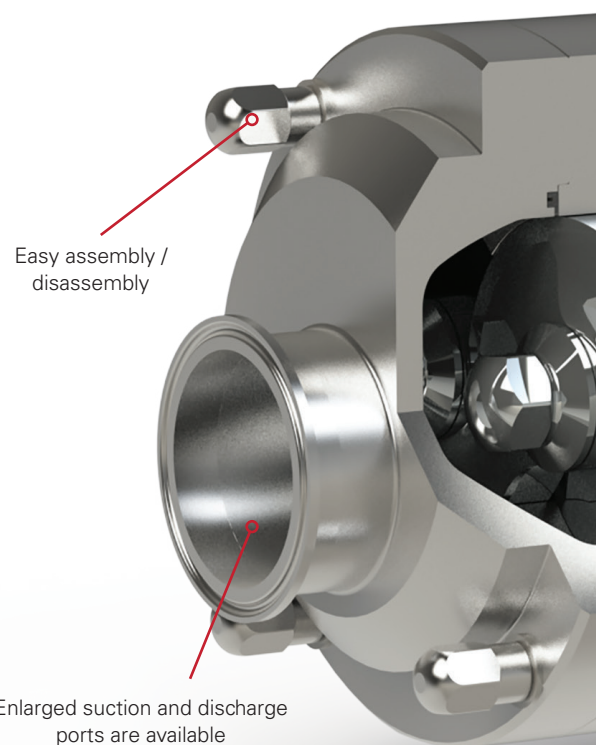
- Gentle handling of soft solids
- Low shear handling of products
- Low and high viscosity 1-1,000,000cP
- Balanced rotors allow running speeds up to 3000 RPM
- Bi-directional flow
- Handles up to 60% entrained air
- Improved bearing lubrication allows for cooler running temperatures
- Fluid end and body are machined from 316L stainless steel bar stock
- Immediate spare parts availability

GENERAL DETAILS

- 316L stainless steel fluid end components
- 304 stainless steel gearcase and adapter
- 17-4 PH stainless steel shafts
- Long-coupled standard, close-coupled option available
- Flush ports standard for easy conversion to double seals
- Helical gears for quiet operation
- Hardening options up to 74 Rockwell C

OPTIONS

- Multiple port options are available
 - Tri-Clamp
 - NPT
 - DIN 11851
 - SMS
 - Bevel Seat
 - ANSI 150# Flange
- Custom transport carts are available
- Multiple screw sizes and pitch options available to handle any application
- Double mechanical seal with flush option is available (lip seal option available soon)
- Heating jackets
- Hardened rotor option

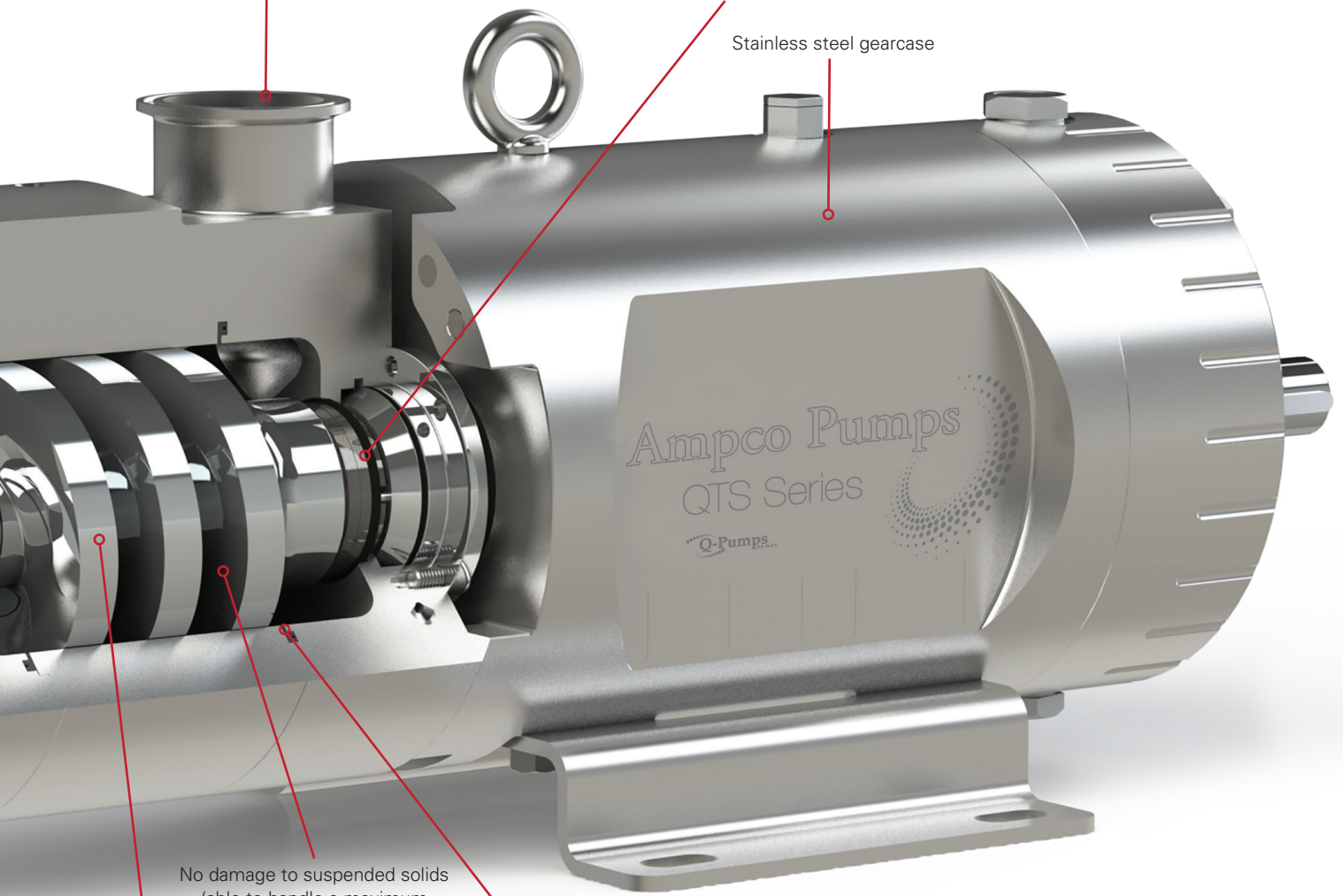




Tri-Clamp port connections
standard (international
options available)

Available with single or double
mechanical seal - material options
include silicon carbide, tungsten
carbide, or carbon

Stainless steel gearcase



No damage to suspended solids
(able to handle a maximum
particulate size of 1.5")

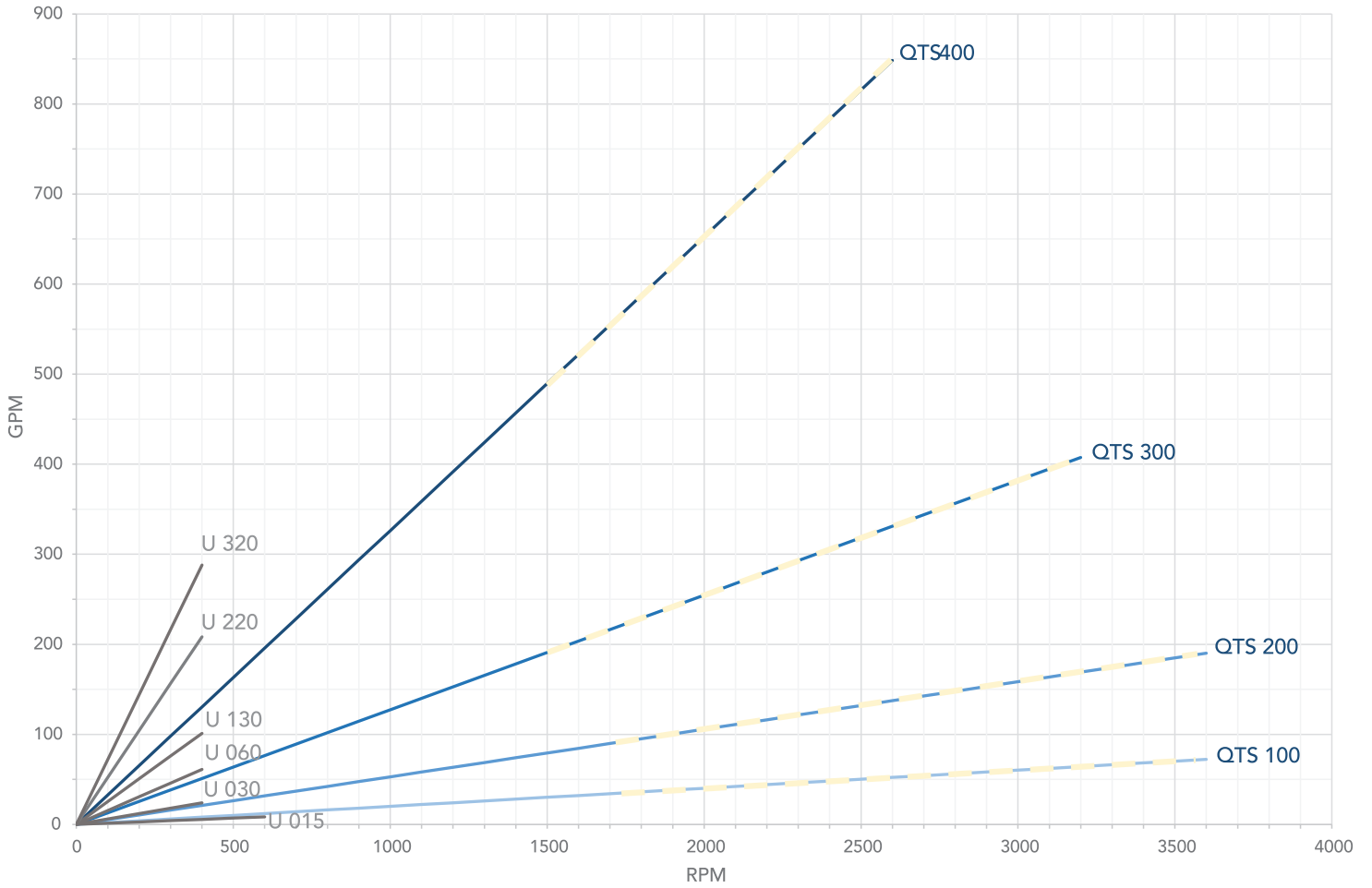
Multiple pitch options for
optimal performance

Close clearances for
vacuum capability

Stainless steel baseplate suitable for
NEMA/IEC motor assembly

QTS Curve Overview

--- CIP Range

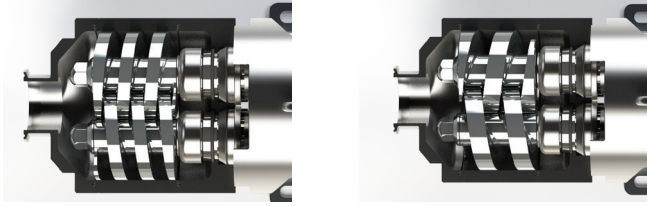


MODEL	QTS 100	QTS 200	QTS 300	QTS 400
Suction / Discharge	1" / 25 mm 2" / 51 mm	2" / 51 mm, 2.5" / 64 mm, 3" / 76 mm 2" / 51 mm, 2.5" / 64 mm	3" / 76 mm, 4" / 102 mm 3" / 76 mm	4" / 102 mm, 6" / 152 mm 4" / 102 mm
Max Particle Size	0.5" / 13 mm	0.70" / 18 mm	1" / 25 mm	1.5" / 38 mm



ROTORS

- Standard and hot clearance rotors are available
- Three pitch options per model

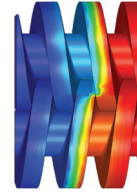


PRESSURE RATINGS BY MODEL

QTS	MAX PRESSURE	BAR
100	175 PSI	12 BAR
200	200 PSI	14 BAR
300	300 PSI	21 BAR
400	350 PSI	24 BAR



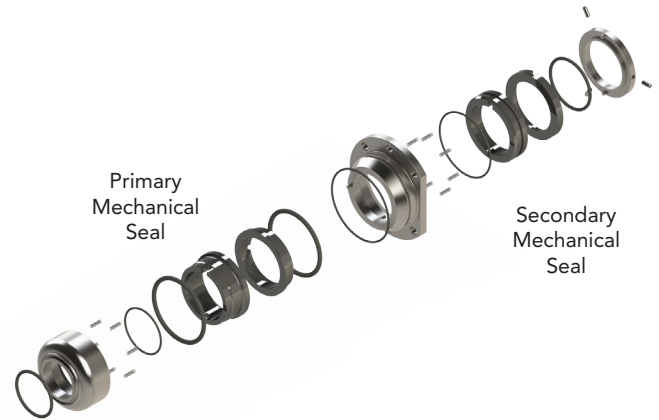
Higher flow
lower pressure



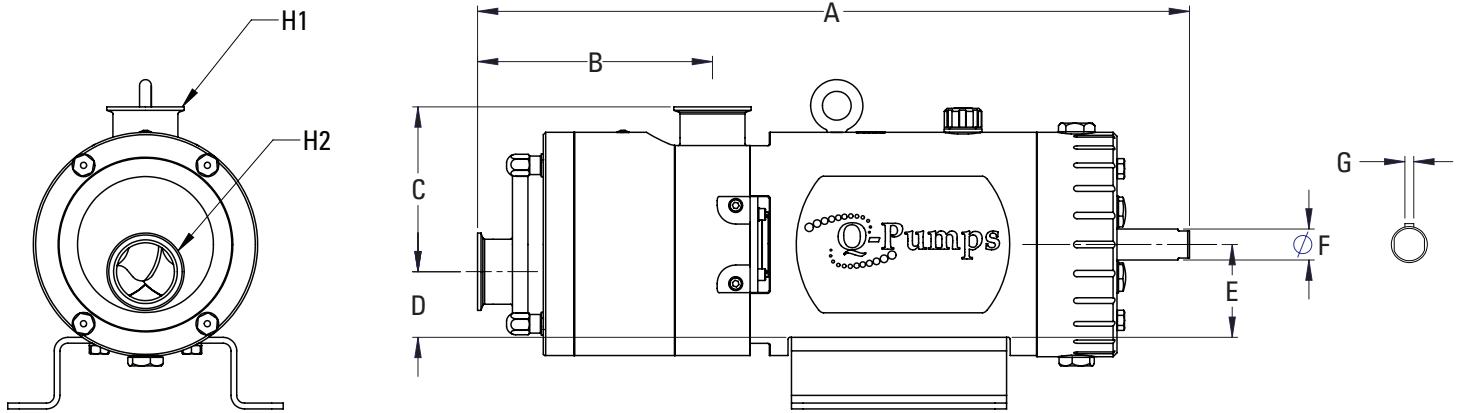
Higher pressure
lower flow

QTS MECHANICAL SEAL

- Single mechanical / Double mechanical / Lip seal
- Easily converted from a single seal to a double seal, all models come double seal ready
- Seals are capable of handling a vacuum of 28" of Hg
- Seal and service kits are at the factory ready for immediate shipment
- Lower cost than the competition



STANDARD PUMP DIMENSIONS



PUMP SERIE	MAXIMUM PARTICLE SIZE		A		B		C		D		E		F		G		H1		H2	
	in	mm	in	mm	in	mm	in	mm	in	mm	in	mm	in	mm	in	mm	in	mm	in	mm
QTS 100	0.50	12.7	17.37	441	5.45	138	4.48	114	1.83	47	2.57	65	0.71	18	3/16	4.7	1½ - 2	38.1 - 50.8	1½ - 2	38.1 - 50.8
QTS 200	0.70	17.8	23.00	584	7.59	193	5.33	135	2.12	54	3.00	76	1.00	25.4	1/4	6.3	2 - 2½	50.8 - 63.5	2 - 3	50.8 - 76.2
QTS 300	1.00	25.4	29.21	742	9.37	238	6.98	177	3.22	82	4.32	110	1.65	42	3/8	9.5	3	76.2	3 - 4	76.2 - 101.6
QTS 400	1.50	38.1	39.21	996	13.10	333	8.92	227	4.18	106	5.62	143	2.125	54	1/2	12.7	4 - 6	76.2 - 152.4	4 - 6	76.2 - 152.4

Visit www.ampcopumps.com for individual pump curves and dimensional drawings.



Ampco Pumps
Company

2045 W. Mill Road
Glendale, WI 53209
Phone: 800.737.8671
www.ampcopumps.com

Am Gäxwald 6
76863 Herxheim Germany
Phone: +49 7276 5058515
info@ampcopumps.de

Ampco Pumps
GmbH