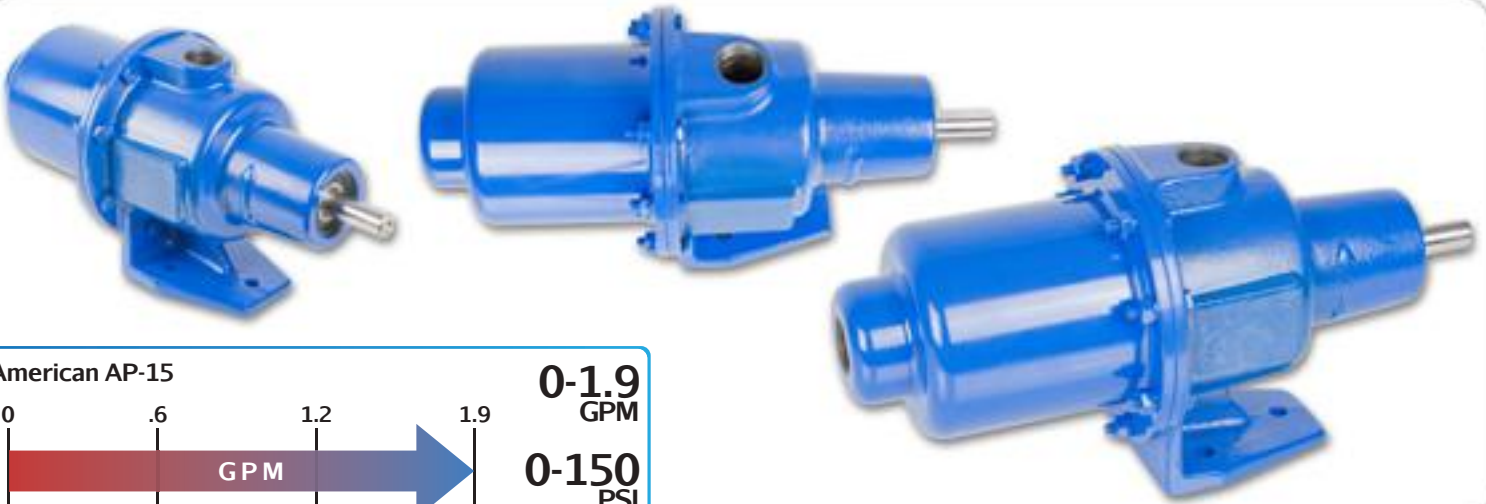


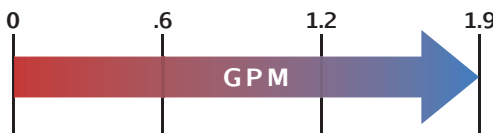


# AMERICAN SERIES - AP-15

Wobble Stator Progressive Cavity Pump



American AP-15



0-1.9  
GPM

0-150  
PSI

## Features

- Low Cost
- Low Shear
- Solids Handling
- Compact Design
- Direct Motor Speeds
- Gear Reduction Options

## Materials

**Rotor:** *Stainless Steel Chrome-Plated*

**Stator:** *Buna, Viton™, EPDM*

**Motor:** *1/2, 3/4, 1, 1.5, and 2 hp*

**Inlet:** *3/4"*

**Outlet:** *3/4"*

**Bases:** *Steel or Stainless Steel*

## Pump Description

The American AP Progressive Cavity Wobble Stator Pump Series from Liberty Process Equipment offers the best value available on the pump market for a progressive cavity pump for flows up to 53 GPM and pressures up to 150 psi. The simple design of the wobble stator and just one universal joint give you the inherent advantages of a progressive cavity pump of low pulsation and shear, solids handling and viscous liquids at an affordable price.

The Long-Coupled and Close-Coupled Version is available in either Cast Iron or 316 Stainless Steel with standard Buna Nitrile Stator with options in Viton and EPDM and Stainless Internals with a hard-chrome plated rotor for long service life. In addition, the pump is available with a standard mechanical seal or can be upgraded to a hard-face mechanical seal for abrasion resistance. We also offer optional Gland Packing.

The American Pump Series is offered in a Long-Coupled design for mounting on a baseplate with a standard motor. All pumps are offered "off the shelf" from our inventory for immediate shipment.

## Curves

[Click Links Below](#)

**AP-15**

## Drawings

[Click Links Below](#)

**AP-15**



P: 847.640.7867 F: 847.640.7855  
2525 Clearbrook Drive Arlington Heights, IL 60005

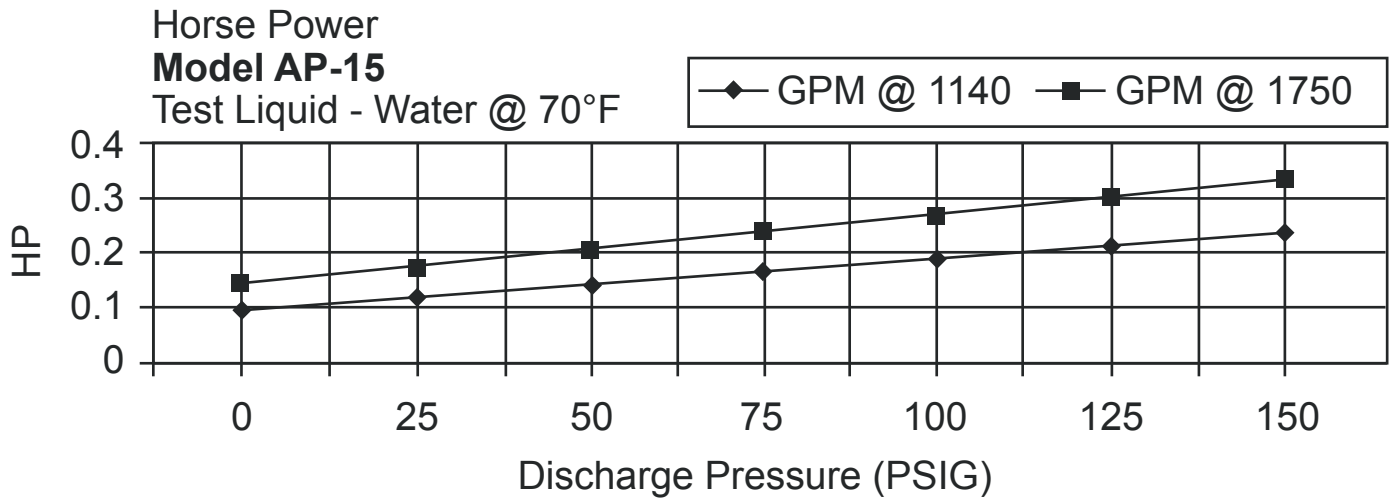
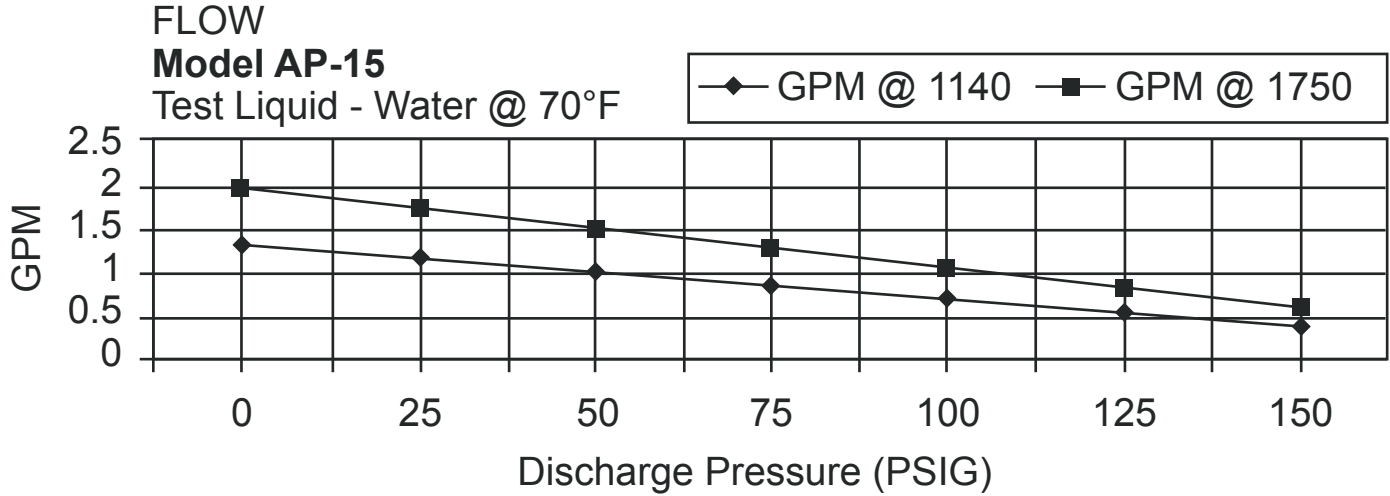
[www.libertyprocess.com](http://www.libertyprocess.com)



# AMERICAN SERIES - AP15

Progressive Cavity Pump

Performance Curves

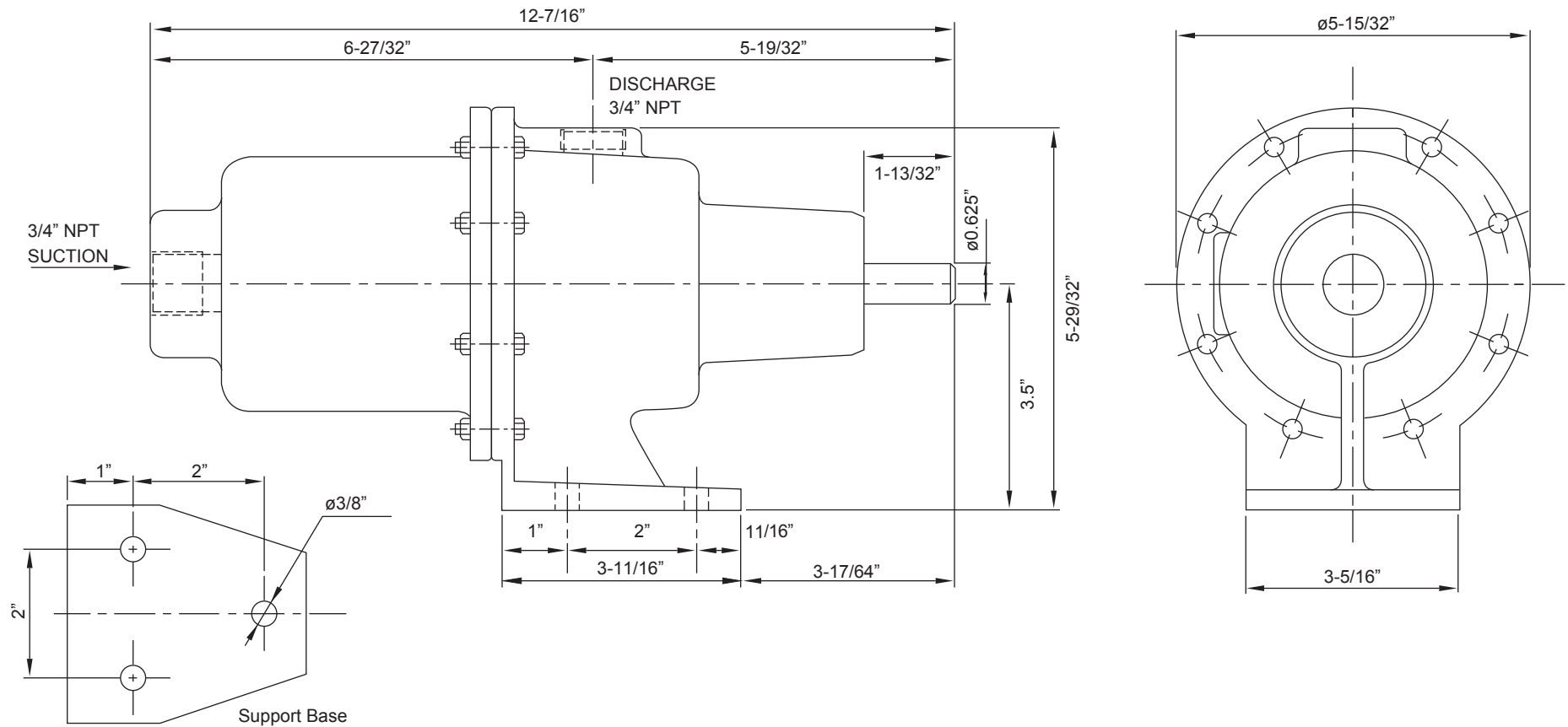




# AMERICAN SERIES - AP-15

Progressive Cavity Pump

Dimensional Drawings



[BACK TO TOP](#)

**Wobble Stator Pump**

Net weight

≈ lbs.

**20**

Inches

P: 847.640.7867 F: 847.640.7855  
2525 Clearbrook Drive Arlington Heights, IL 60005

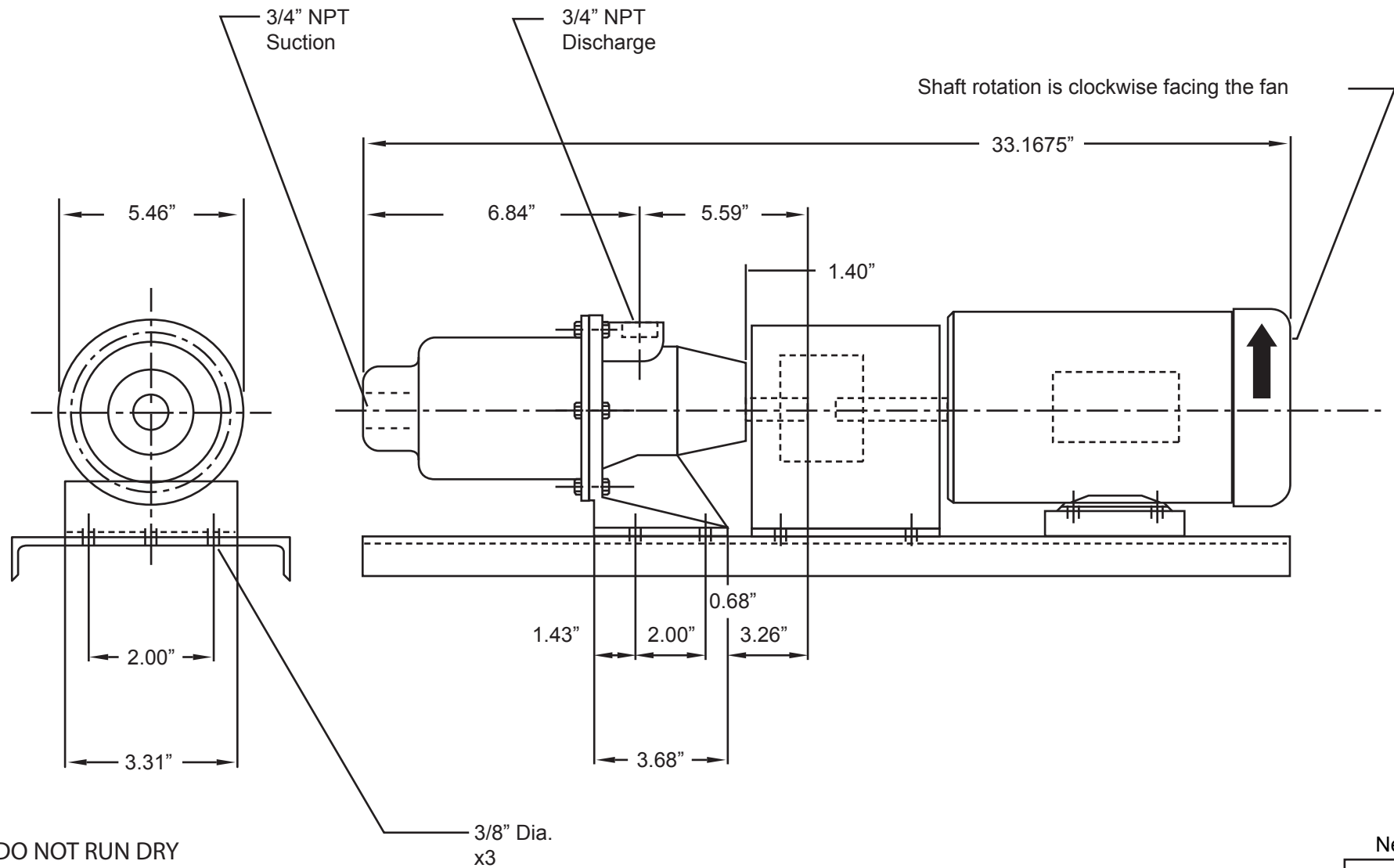
[www.libertyprocess.com](http://www.libertyprocess.com)



# AMERICAN SERIES - AP-15 COMPLETE PACKAGE

Progressive Cavity Pump

Dimensional Drawings



[BACK TO TOP](#)

Net weight
≈ lbs.
<b>20</b>

ALL DIMN: Inches

**Wobble Stator Pump**

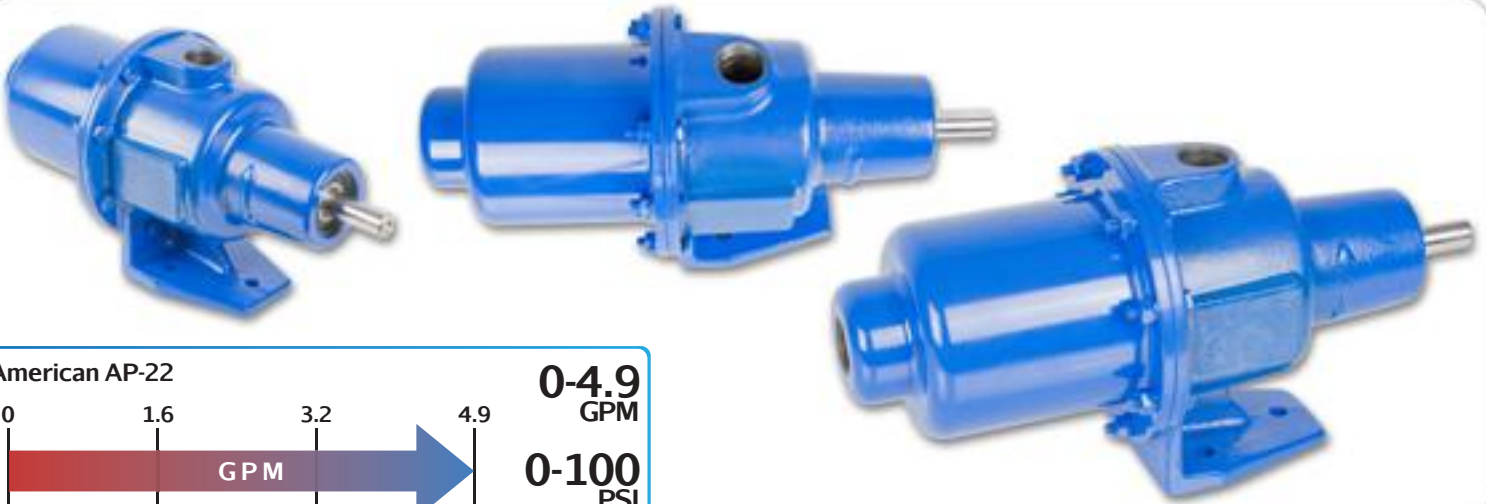
P: 847.640.7867 F: 847.640.7855  
2525 Clearbrook Drive Arlington Heights, IL 60005

[www.libertyprocess.com](http://www.libertyprocess.com)



# AMERICAN SERIES - AP-22

Wobble Stator Progressive Cavity Pump



American AP-22



0-4.9  
GPM

0-100  
PSI

## Features

- Low Cost
- Low Shear
- Solids Handling
- Compact Design
- Direct Motor Speeds
- Gear Reduction Options

## Materials

**Rotor:** *Stainless Steel Chrome-Plated*

**Stator:** *Buna, Viton™, EPDM*

**Motor:** *1/2, 3/4, 1, 1.5, and 2 hp*

**Inlet:** *3/4"*

**Outlet:** *3/4"*

**Bases:** *Steel or Stainless Steel*

## Pump Description

The American AP Progressive Cavity Wobble Stator Pump Series from Liberty Process Equipment offers the best value available on the pump market for a progressive cavity pump for flows up to 53 GPM and pressures up to 150 psi. The simple design of the wobble stator and just one universal joint give you the inherent advantages of a progressive cavity pump of low pulsation and shear, solids handling and viscous liquids at an affordable price.

The Long-Coupled and Close-Coupled Version is available in either Cast Iron or 316 Stainless Steel with standard Buna Nitrile Stator with options in Viton and EPDM and Stainless Internals with a hard-chrome plated rotor for long service life. In addition, the pump is available with a standard mechanical seal or can be upgraded to a hard-face mechanical seal for abrasion resistance. We also offer optional Gland Packing.

The American Pump Series is offered in a Long-Coupled design for mounting on a baseplate with a standard motor. All pumps are offered "off the shelf" from our inventory for immediate shipment.

## Curves

[Click Links Below](#)

**AP-22**

## Drawings

[Click Links Below](#)

**AP-22**



P: 847.640.7867 F: 847.640.7855  
2525 Clearbrook Drive Arlington Heights, IL 60005

[www.libertyprocess.com](http://www.libertyprocess.com)



# AMERICAN SERIES - AP22

Progressive Cavity Pump

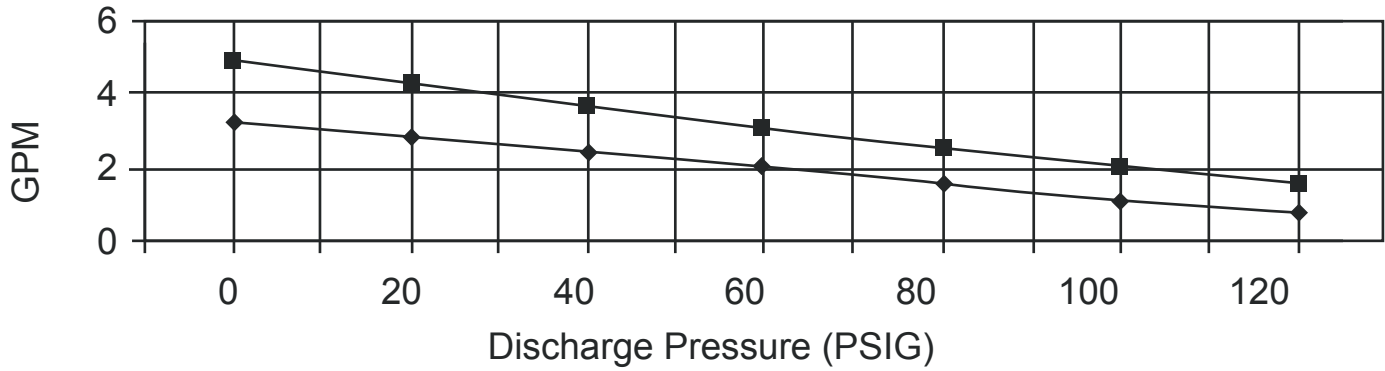
Performance Curves

FLOW

**Model AP-22**

Test Liquid - Water @ 70°F

◆ GPM @ 1140    ■ GPM @ 1750

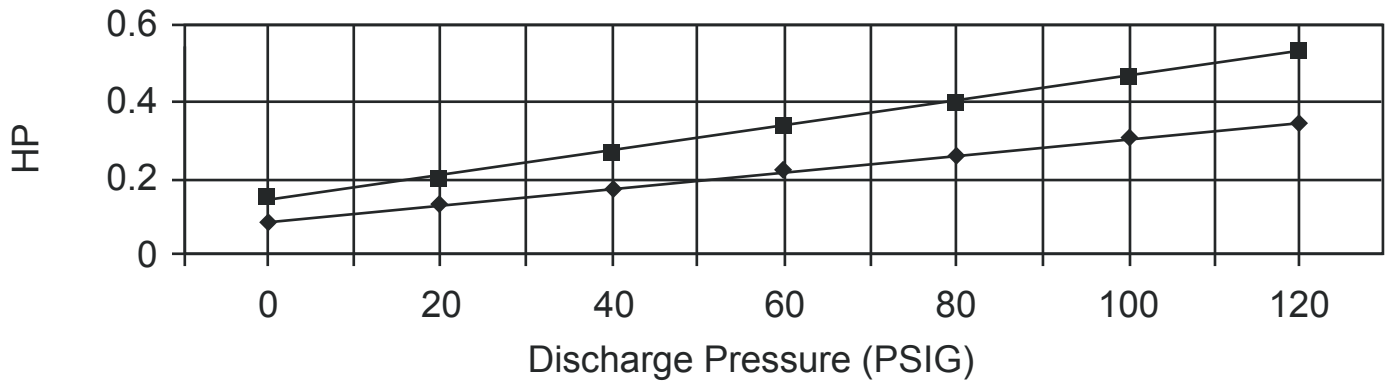


Horse Power

**Model AP-22**

Test Liquid - Water @ 70°F

◆ GPM @ 1140    ■ GPM @ 1750

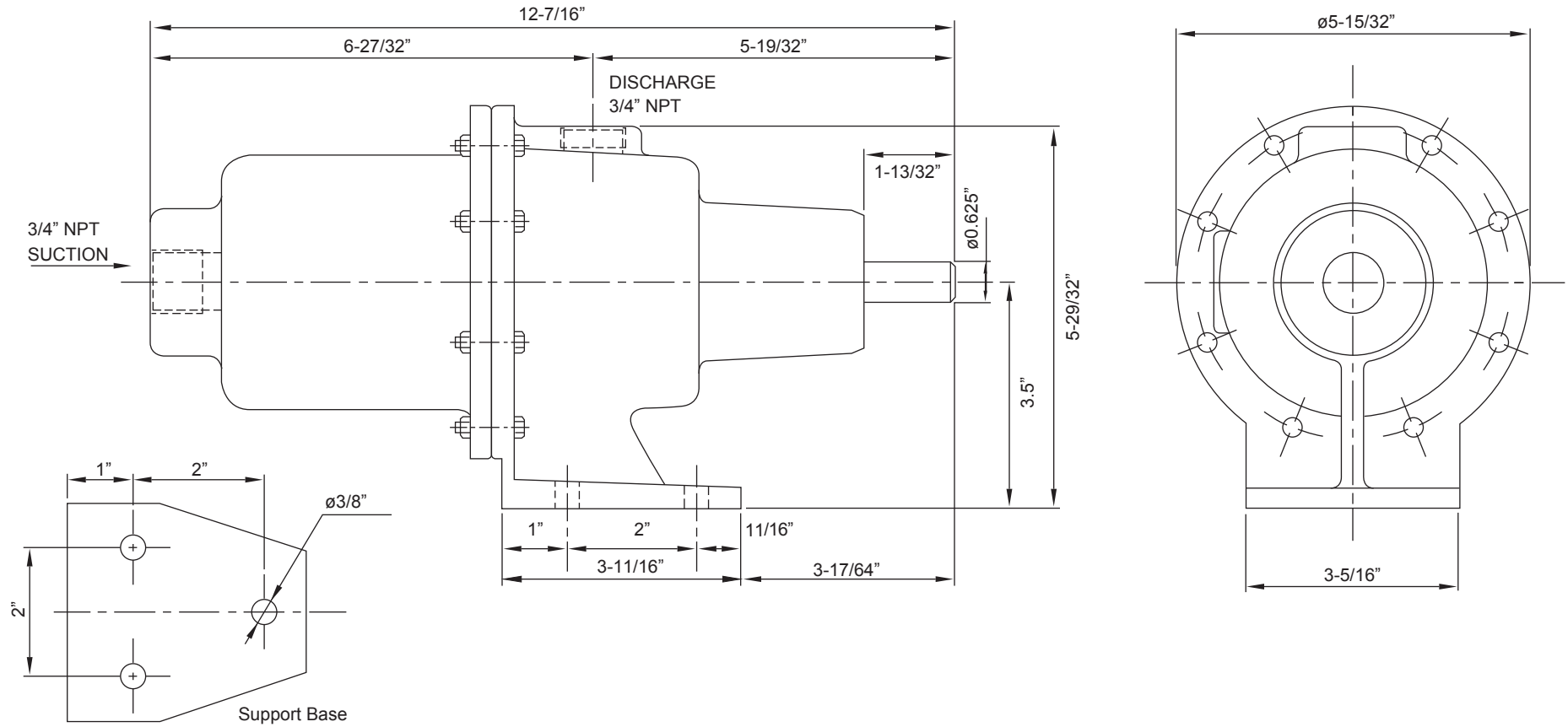




# AMERICAN SERIES - AP-22

Progressive Cavity Pump

Dimensional Drawings



BACK TO TOP

**Wobble Stator Pump**

Net weight

≈ lbs.

**20**

Inches

P: 847.640.7867 F: 847.640.7855  
2525 Clearbrook Drive Arlington Heights, IL 60005

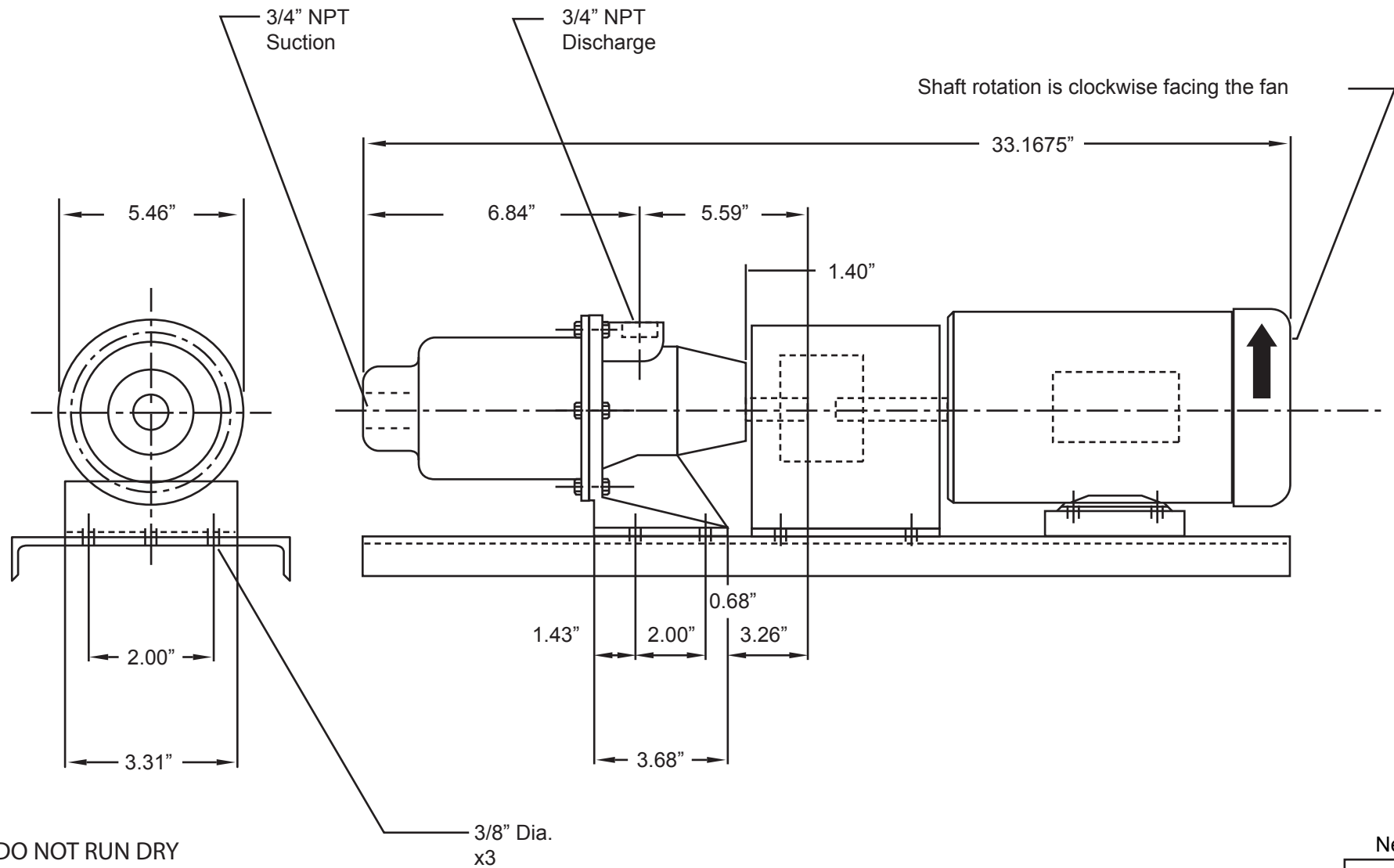
[www.libertyprocess.com](http://www.libertyprocess.com)



# AMERICAN SERIES - AP-22 COMPLETE PACKAGE

Progressive Cavity Pump

Dimensional Drawings



[BACK TO TOP](#)

**Wobble Stator Pump**

Net weight	
≈ lbs.	
	<b>20</b>

ALL DIMN: Inches

P: 847.640.7867 F: 847.640.7855  
2525 Clearbrook Drive Arlington Heights, IL 60005

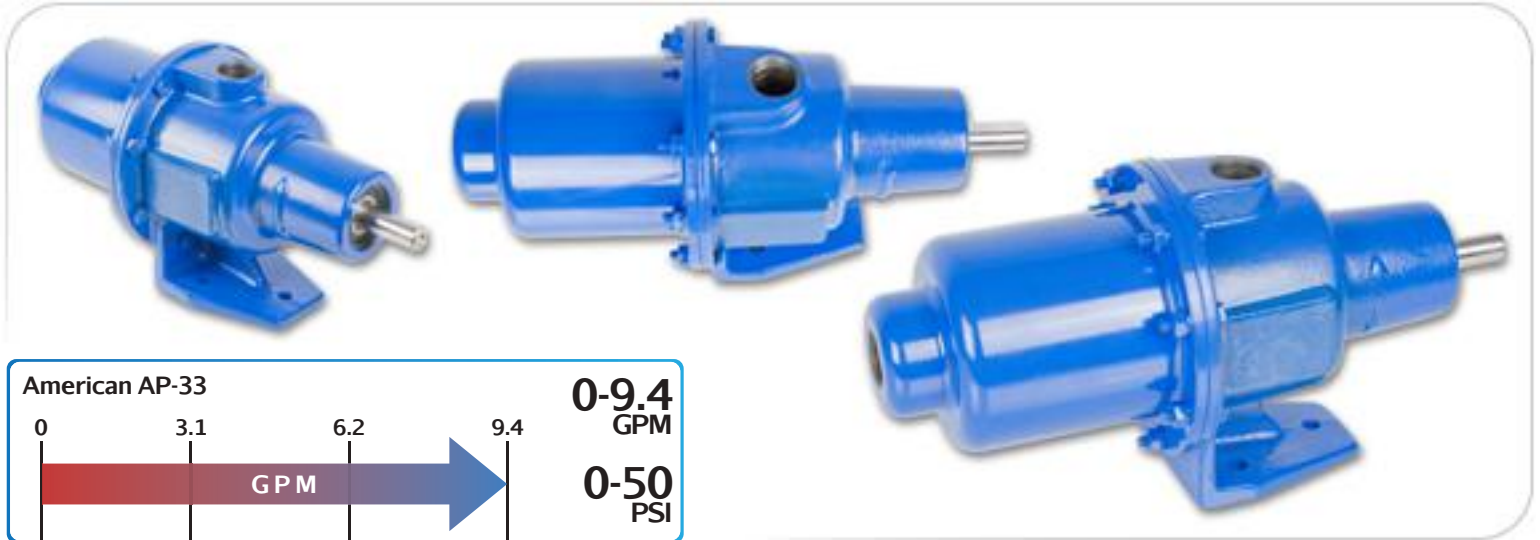
[www.libertyprocess.com](http://www.libertyprocess.com)





# AMERICAN SERIES - AP-33

Wobble Stator Progressive Cavity Pump



## Features

- Low Cost
- Low Shear
- Solids Handling
- Compact Design
- Direct Motor Speeds
- Gear Reduction Options

## Materials

**Rotor:** *Stainless Steel Chrome-Plated*

**Stator:** *Buna, Viton™, EPDM*

**Motor:** *3/4, 1, 1.5, and 2 hp*

**Inlet:** *3/4"*

**Outlet:** *3/4"*

**Bases:** *Steel or Stainless Steel*

## Pump Description

The American AP Progressive Cavity Wobble Stator Pump Series from Liberty Process Equipment offers the best value available on the pump market for a progressive cavity pump for flows up to 53 GPM and pressures up to 150 psi. The simple design of the wobble stator and just one universal joint give you the inherent advantages of a progressive cavity pump of low pulsation and shear, solids handling and viscous liquids at an affordable price.

The Long-Coupled and Close-Coupled Version is available in either Cast Iron or 316 Stainless Steel with standard Buna Nitrile Stator with options in Viton and EPDM and Stainless Internals with a hard-chrome plated rotor for long service life. In addition, the pump is available with a standard mechanical seal or can be upgraded to a hard-face mechanical seal for abrasion resistance. We also offer optional Gland Packing.

The American Pump Series is offered in a Long-Coupled design for mounting on a baseplate with a standard motor. All pumps are offered "off the shelf" from our inventory for immediate shipment.

## Curves

[Click Links Below](#)

**AP-33**

## Drawings

[Click Links Below](#)

**AP-33**



P: 847.640.7867 F: 847.640.7855  
2525 Clearbrook Drive Arlington Heights, IL 60005

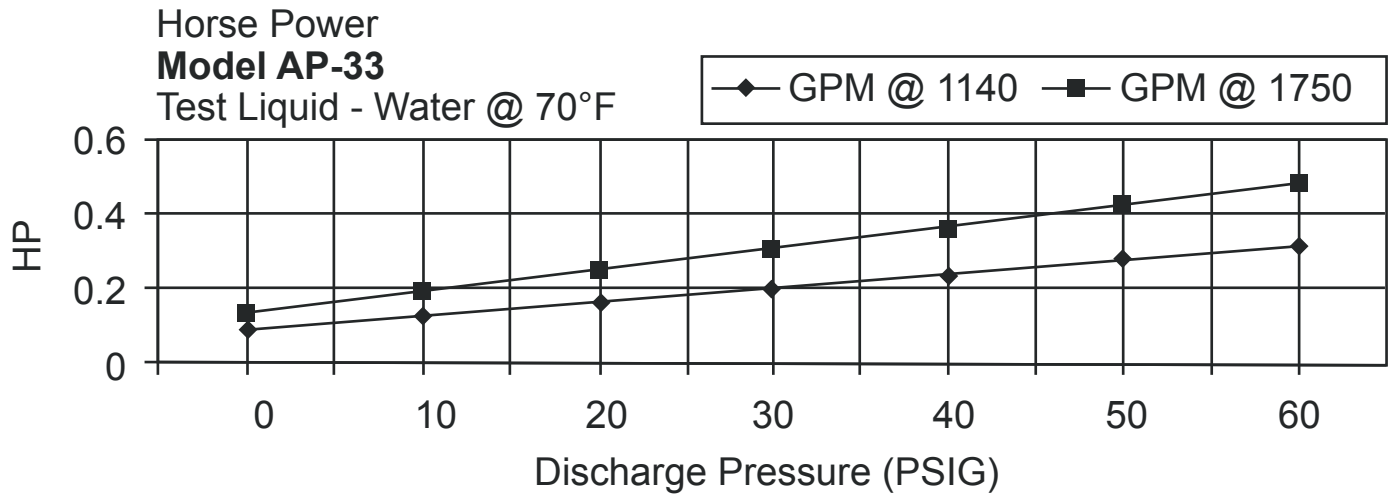
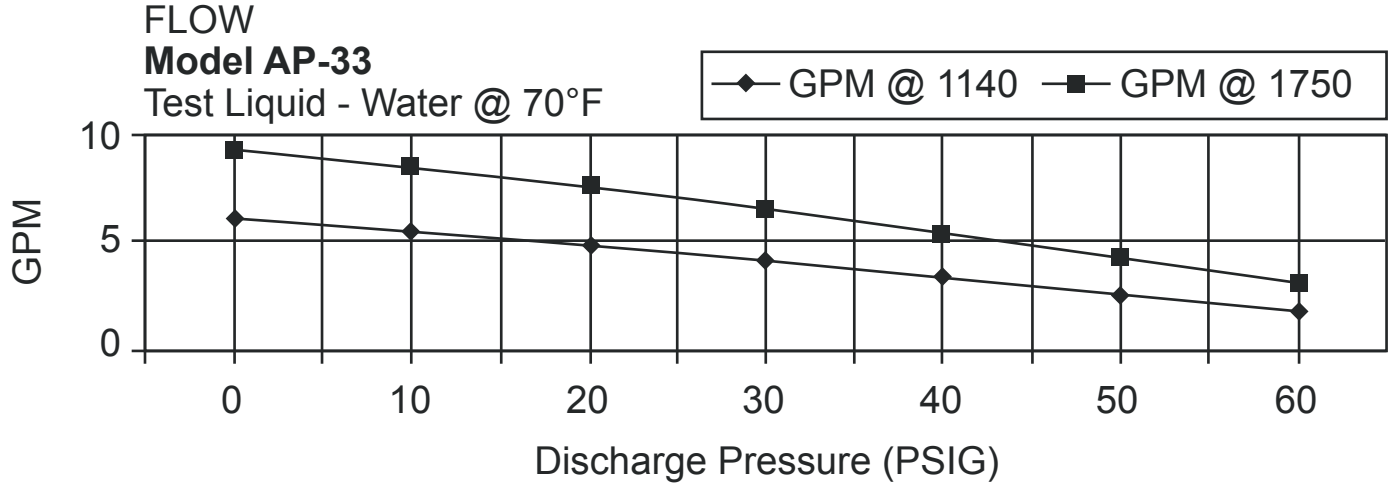
[www.libertyprocess.com](http://www.libertyprocess.com)



# AMERICAN SERIES - AP33

Progressive Cavity Pump

Performance Curves

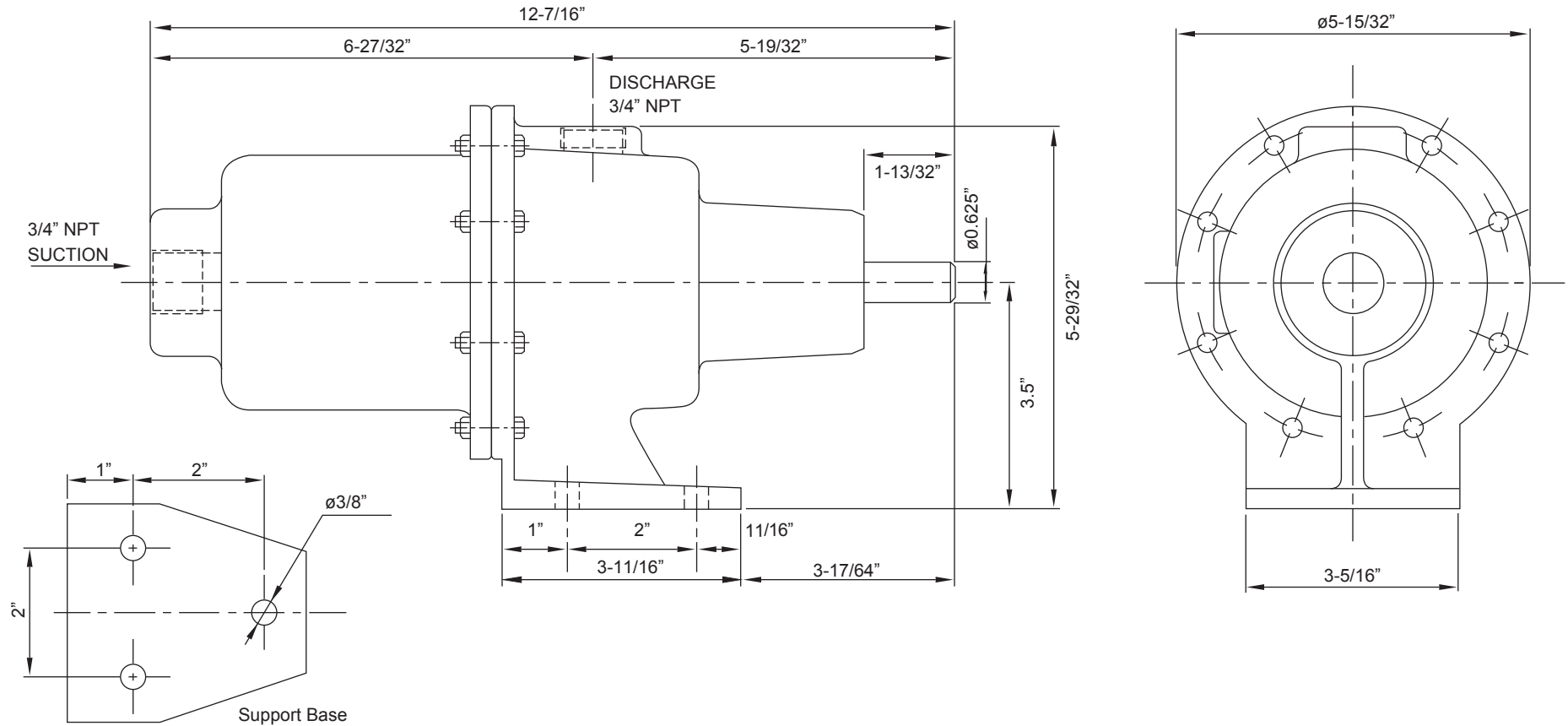




# AMERICAN SERIES - AP-33

Progressive Cavity Pump

Dimensional Drawings



[BACK TO TOP](#)

**Wobble Stator Pump**

Net weight

≈ lbs.

**20**

Inches

P: 847.640.7867 F: 847.640.7855  
2525 Clearbrook Drive Arlington Heights, IL 60005

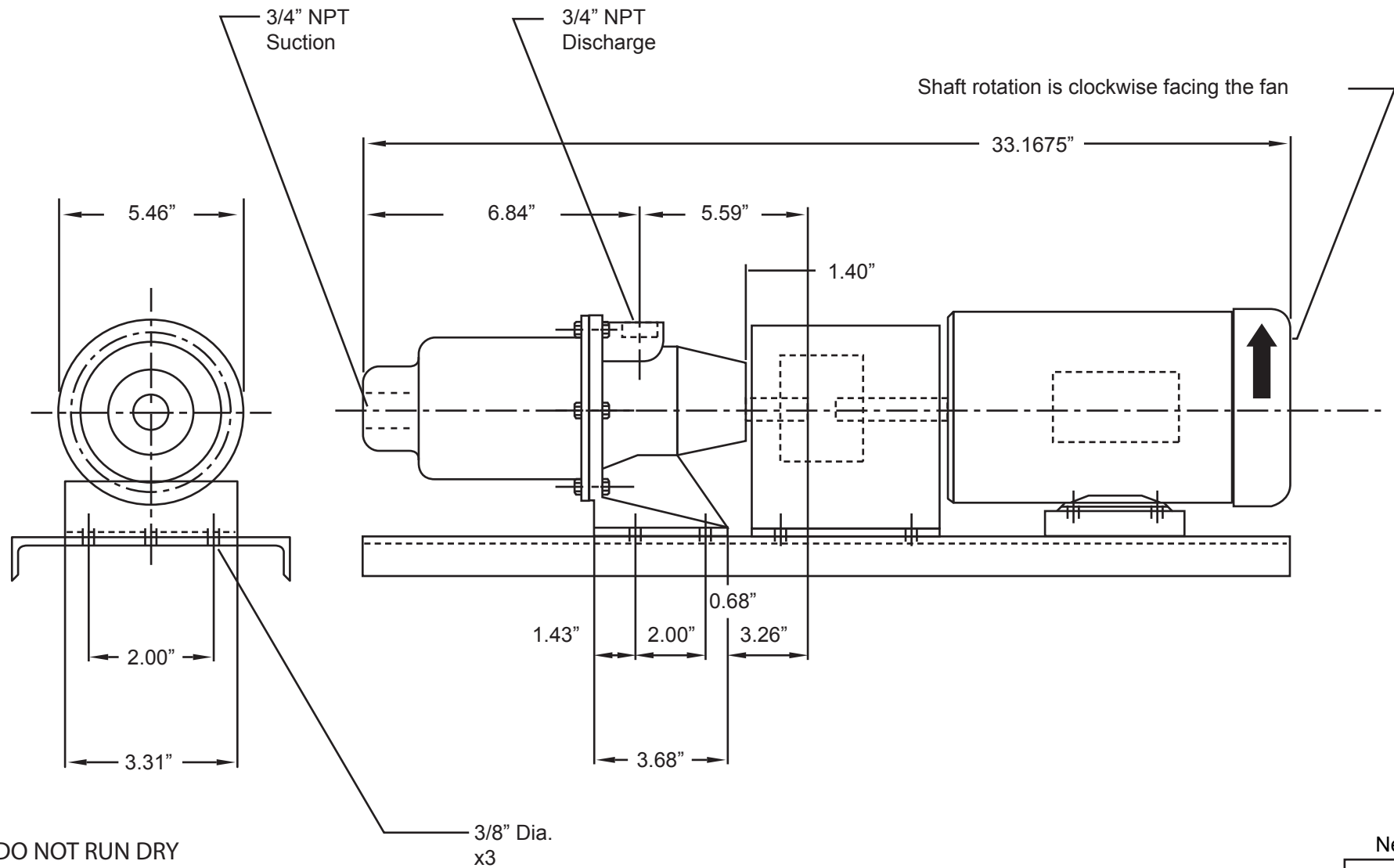
[www.libertyprocess.com](http://www.libertyprocess.com)



# AMERICAN SERIES - AP-33 COMPLETE PACKAGE

Progressive Cavity Pump

Dimensional Drawings



[BACK TO TOP](#)

**Wobble Stator Pump**

Net weight
≈ lbs.
<b>20</b>

ALL DIMN: Inches

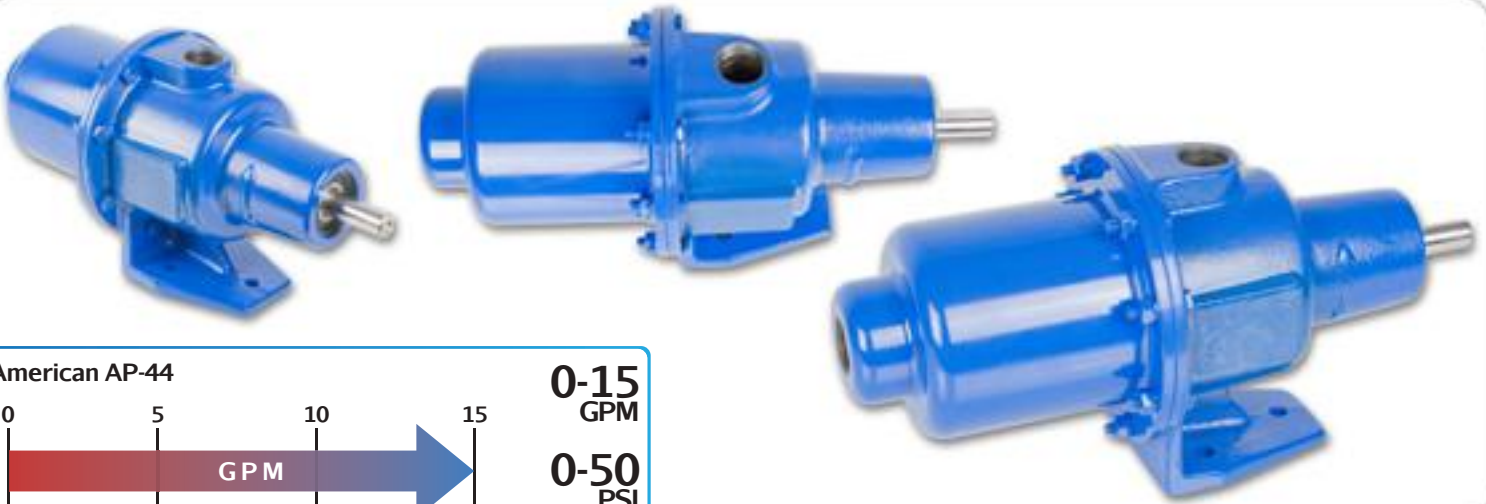
P: 847.640.7867 F: 847.640.7855  
2525 Clearbrook Drive Arlington Heights, IL 60005

[www.libertyprocess.com](http://www.libertyprocess.com)

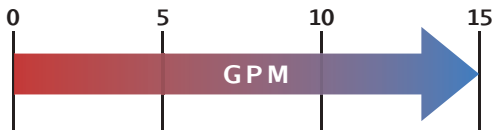


# AMERICAN SERIES - AP-44

Wobble Stator Progressive Cavity Pump



American AP-44



0-15  
GPM

0-50  
PSI

## Features

- Low Cost
- Low Shear
- Solids Handling
- Compact Design
- Direct Motor Speeds
- Gear Reduction Options

## Materials

**Rotor:** *Stainless Steel Chrome-Plated*

**Stator:** *Buna, Viton™, EPDM*

**Motor:** *1, 1.5, and 2 hp*

**Inlet:** *3/4"*

**Outlet:** *3/4"*

**Bases:** *Steel or Stainless Steel*

## Pump Description

The American AP Progressive Cavity Wobble Stator Pump Series from Liberty Process Equipment offers the best value available on the pump market for a progressive cavity pump for flows up to 53 GPM and pressures up to 150 psi. The simple design of the wobble stator and just one universal joint give you the inherent advantages of a progressive cavity pump of low pulsation and shear, solids handling and viscous liquids at an affordable price.

The Long-Coupled and Close-Coupled Version is available in either Cast Iron or 316 Stainless Steel with standard Buna Nitrile Stator with options in Viton and EPDM and Stainless Internals with a hard-chrome plated rotor for long service life. In addition, the pump is available with a standard mechanical seal or can be upgraded to a hard-face mechanical seal for abrasion resistance. We also offer optional Gland Packing.

The American Pump Series is offered in a Long-Coupled design for mounting on a baseplate with a standard motor. All pumps are offered "off the shelf" from our inventory for immediate shipment.

## Curves

[Click Links Below](#)

**AP-44**

## Drawings

[Click Links Below](#)

**AP-44**



P: 847.640.7867 F: 847.640.7855  
2525 Clearbrook Drive Arlington Heights, IL 60005

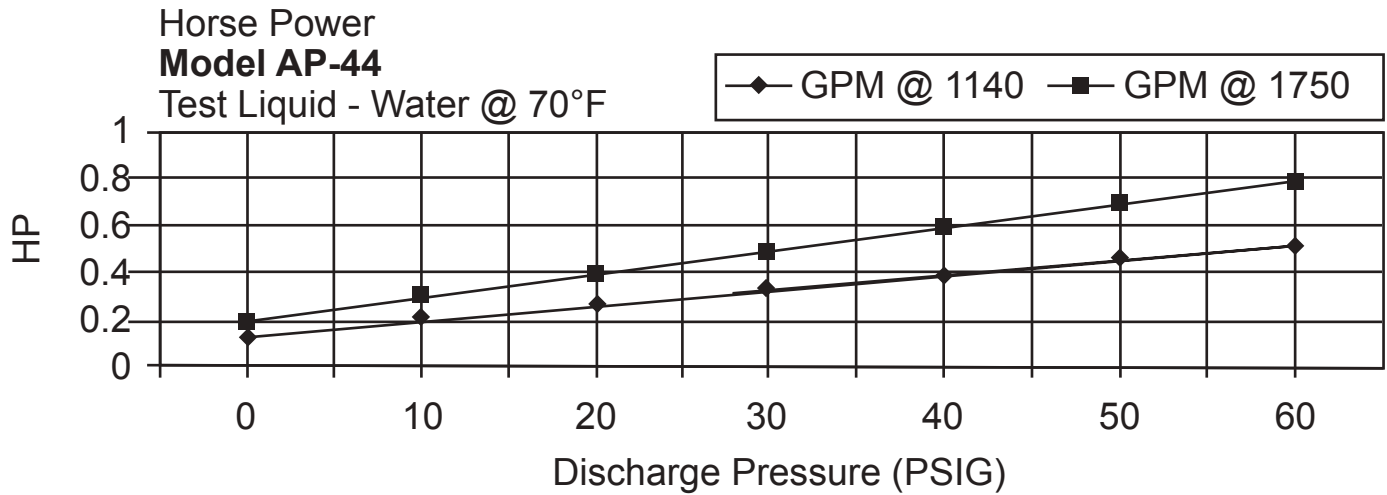
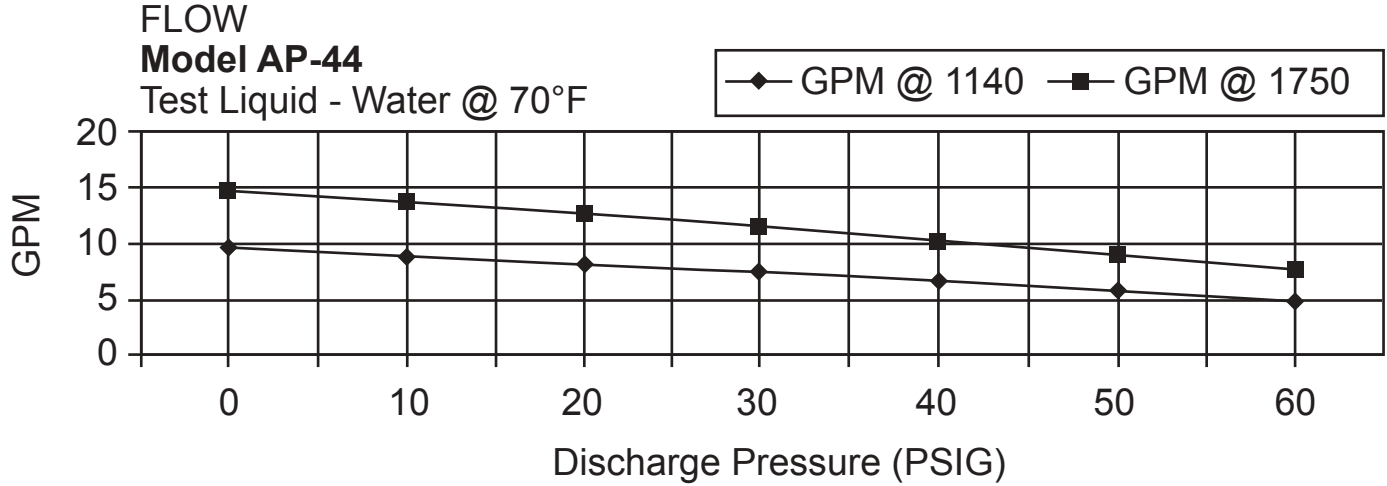
[www.libertyprocess.com](http://www.libertyprocess.com)



# AMERICAN SERIES - AP44

Progressive Cavity Pump

Performance Curves

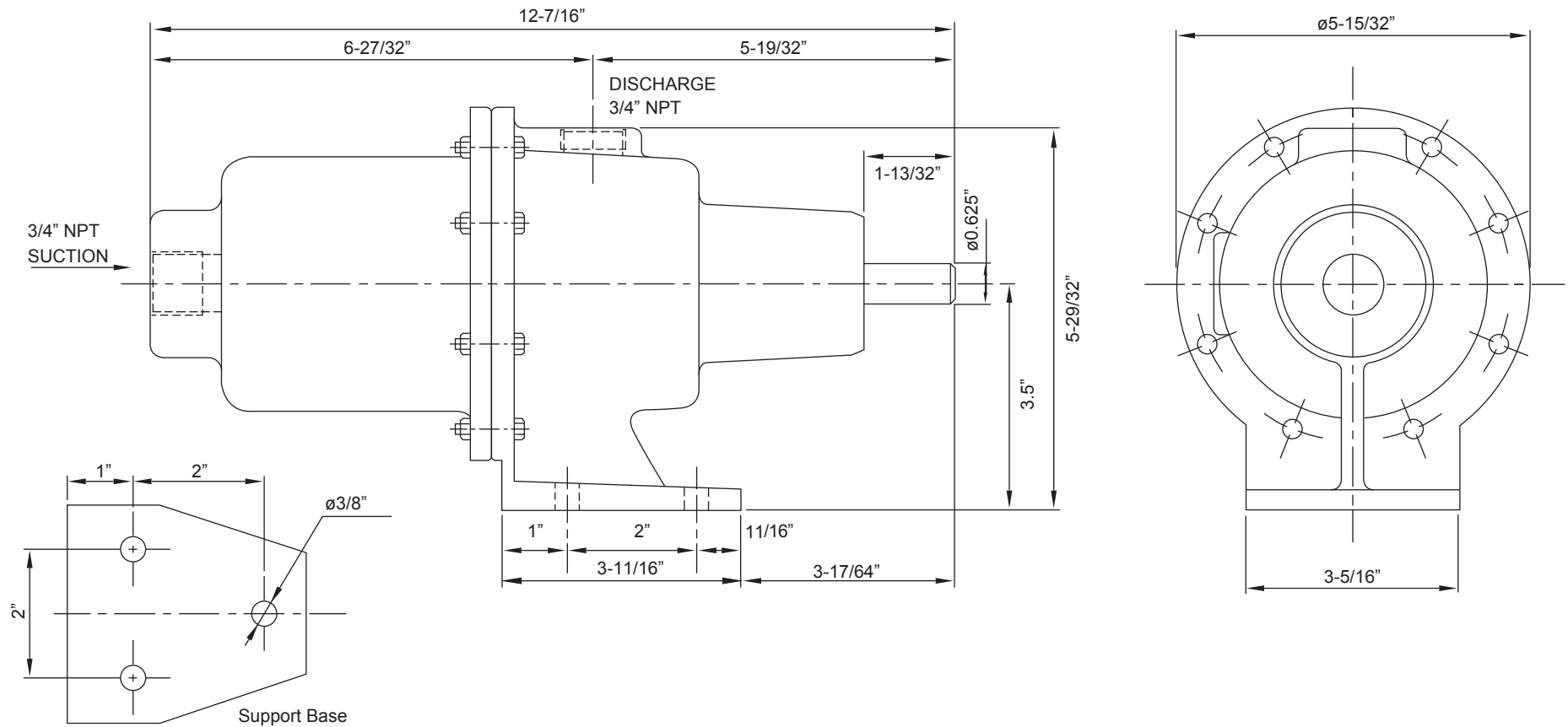




# AMERICAN SERIES - AP-44

Progressive Cavity Pump

Dimensional Drawings



BACK TO TOP

**Wobble Stator Pump**

Net weight

≈ lbs.

**20**

Inches

P: 847.640.7867 F: 847.640.7855  
2525 Clearbrook Drive Arlington Heights, IL 60005

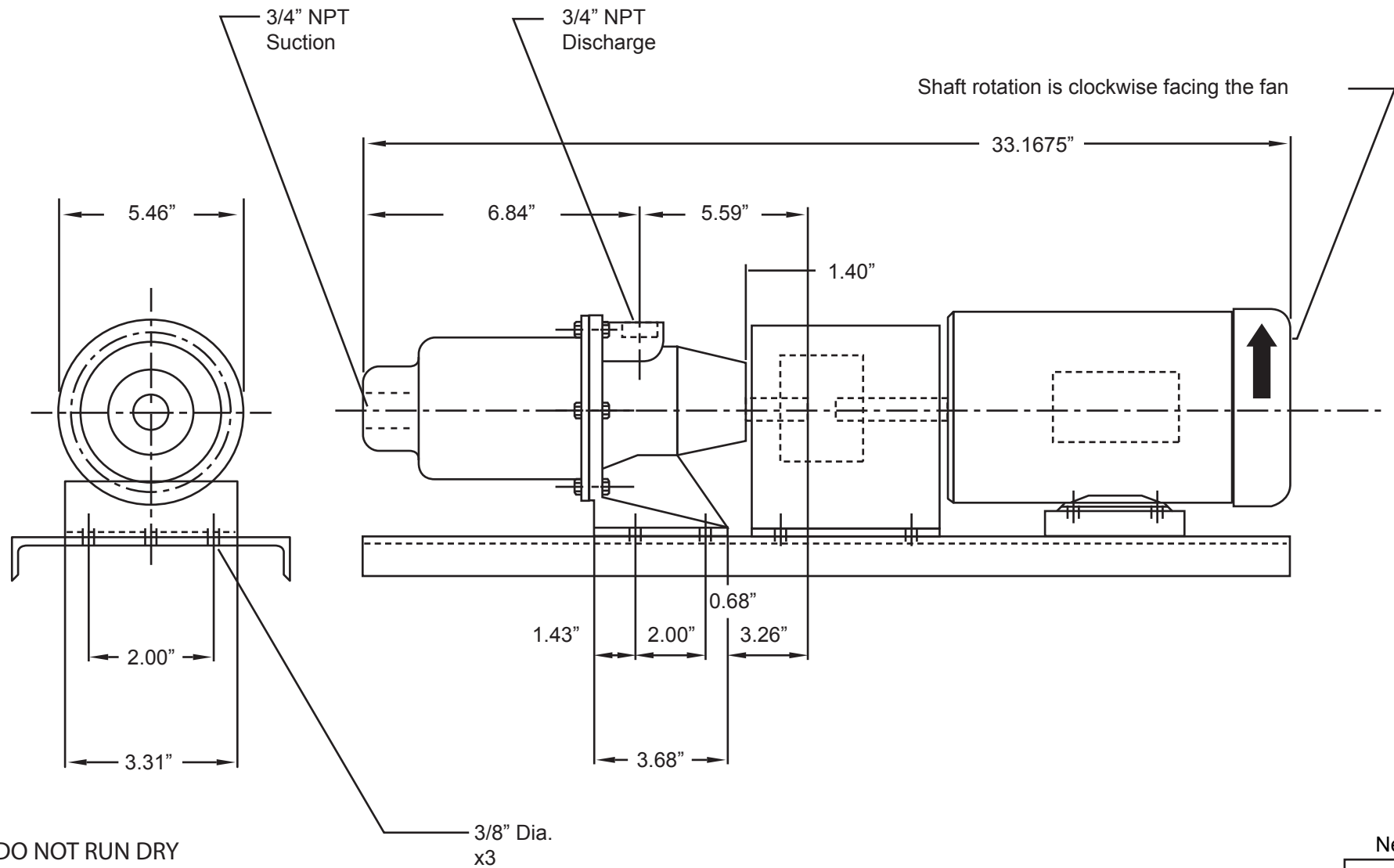
[www.libertyprocess.com](http://www.libertyprocess.com)



# AMERICAN SERIES - AP-44 COMPLETE PACKAGE

Progressive Cavity Pump

Dimensional Drawings



[BACK TO TOP](#)

Net weight
≈ lbs.
<b>20</b>

ALL DIMN: Inches

**Wobble Stator Pump**

P: 847.640.7867 F: 847.640.7855  
2525 Clearbrook Drive Arlington Heights, IL 60005

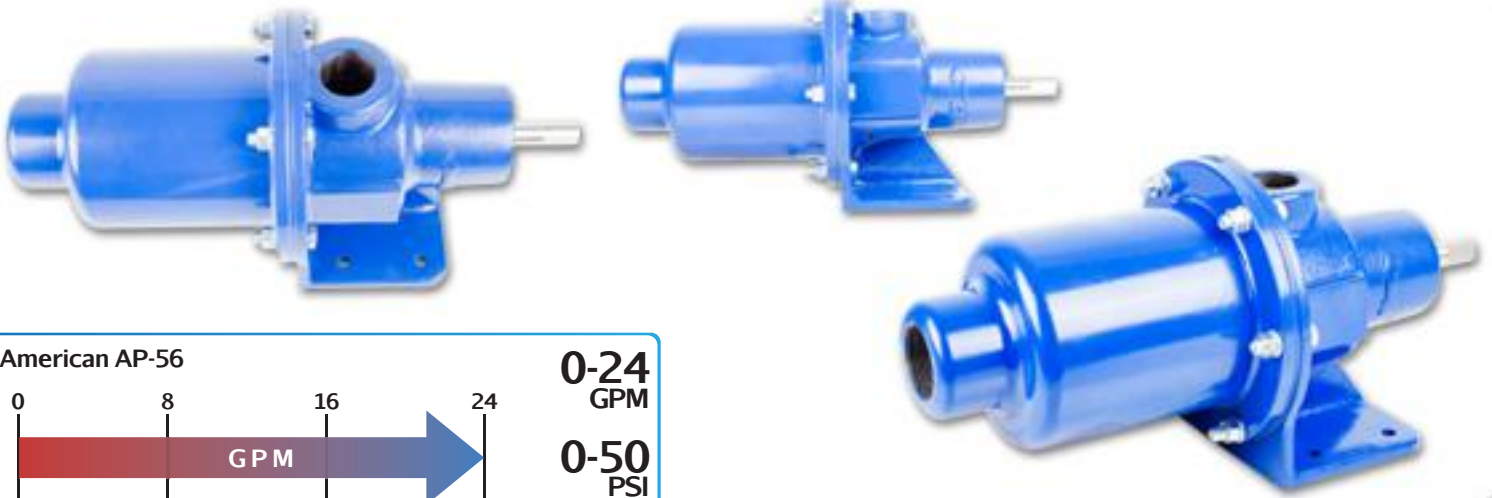
[www.libertyprocess.com](http://www.libertyprocess.com)



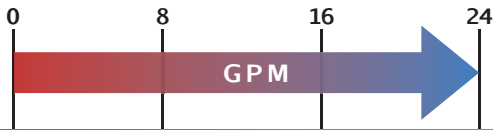


# AMERICAN SERIES - AP-56

Wobble Stator Progressive Cavity Pump



American AP-56



0-24  
GPM  
0-50  
PSI

## Features

- Low Cost
- Low Shear
- Solids Handling
- Compact Design
- Direct Motor Speeds
- Gear Reduction Options

## Materials

**Rotor:** *Stainless Steel Chrome-Plated*

**Stator:** *Buna, Viton™, EPDM*

**Motor:** *1.5, and 2 hp*

**Inlet:** *1-1/2"*

**Outlet:** *1-1/4"*

**Bases:** *Steel or Stainless Steel*

## Pump Description

The American AP Progressive Cavity Wobble Stator Pump Series from Liberty Process Equipment offers the best value available on the pump market for a progressive cavity pump for flows up to 53 GPM and pressures up to 150 psi. The simple design of the wobble stator and just one universal joint give you the inherent advantages of a progressive cavity pump of low pulsation and shear, solids handling and viscous liquids at an affordable price.

The Long-Coupled and Close-Coupled Version is available in either Cast Iron or 316 Stainless Steel with standard Buna Nitrile Stator with options in Viton and EPDM and Stainless Internals with a hard-chrome plated rotor for long service life. In addition, the pump is available with a standard mechanical seal or can be upgraded to a hard-face mechanical seal for abrasion resistance. We also offer optional Gland Packing.

The American Pump Series is offered in a Long-Coupled design for mounting on a baseplate with a standard motor. All pumps are offered "off the shelf" from our inventory for immediate shipment.

## Curves

[Click Links Below](#)

**AP-56**

## Drawings

[Click Links Below](#)

**AP-56**



P: 847.640.7867 F: 847.640.7855  
2525 Clearbrook Drive Arlington Heights, IL 60005

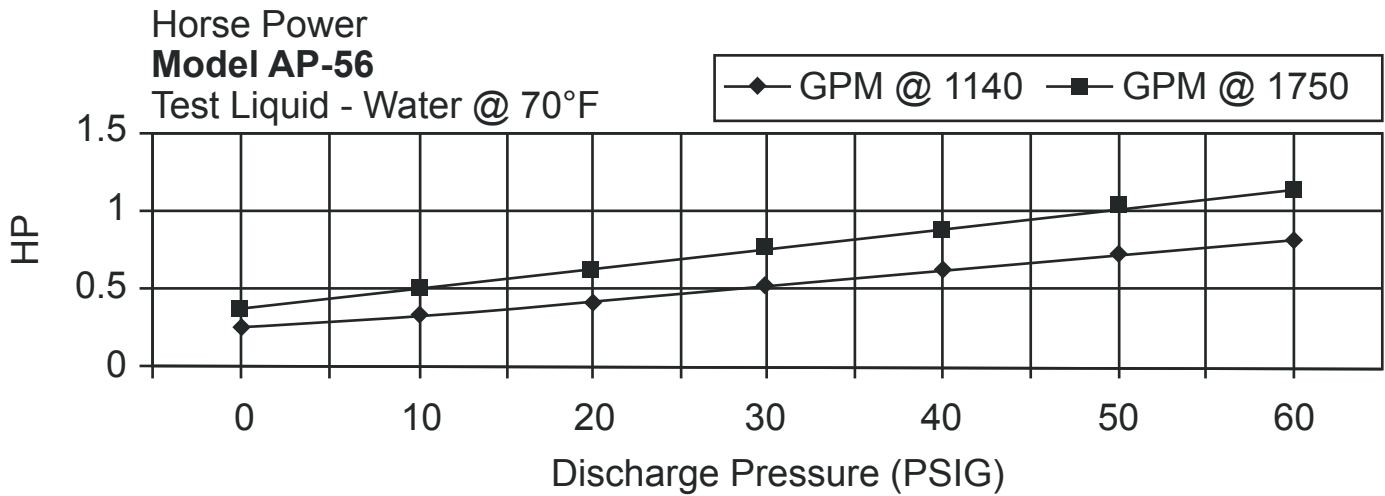
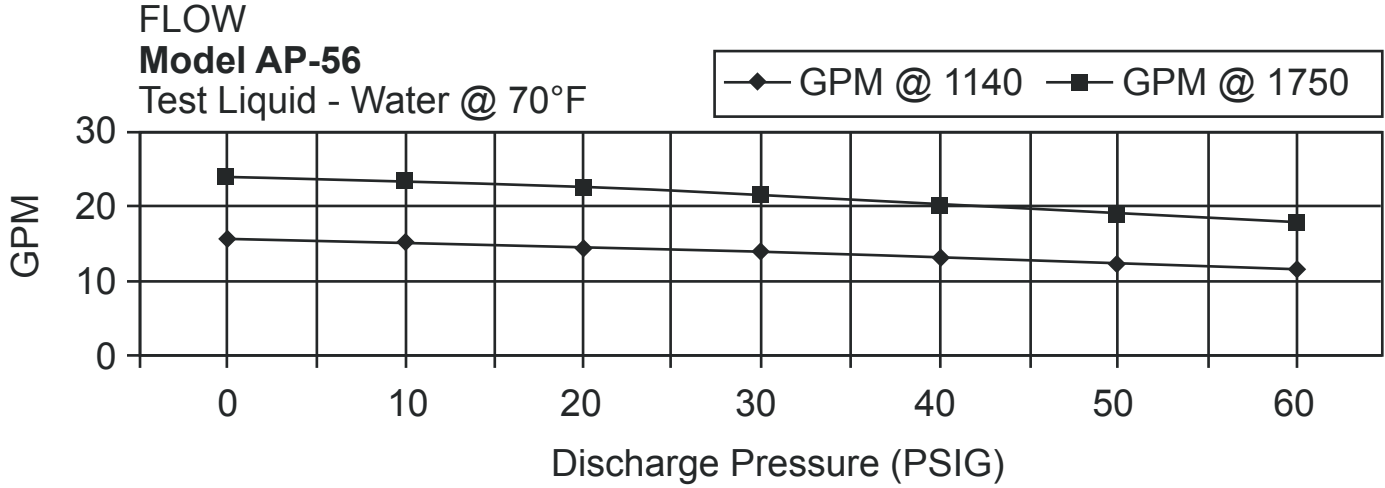
[www.libertyprocess.com](http://www.libertyprocess.com)



# AMERICAN SERIES - AP56

Progressive Cavity Pump

Performance Curves

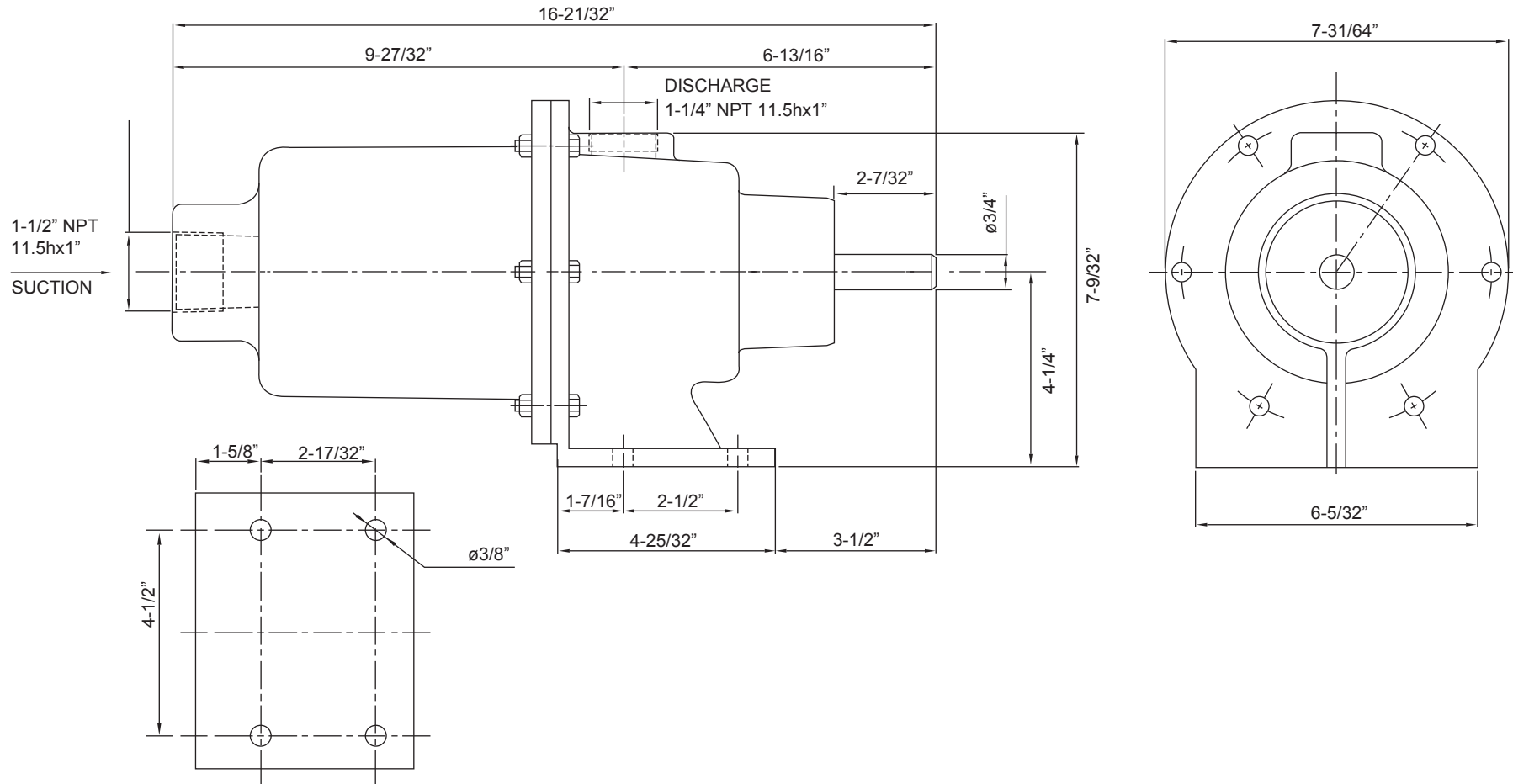




# AMERICAN SERIES - AP-56

Progressive Cavity Pump

Dimensional Drawings



BACK TO TOP

**Wobble Stator Pump**

Net weight

≈ lbs.

**40**

Inches

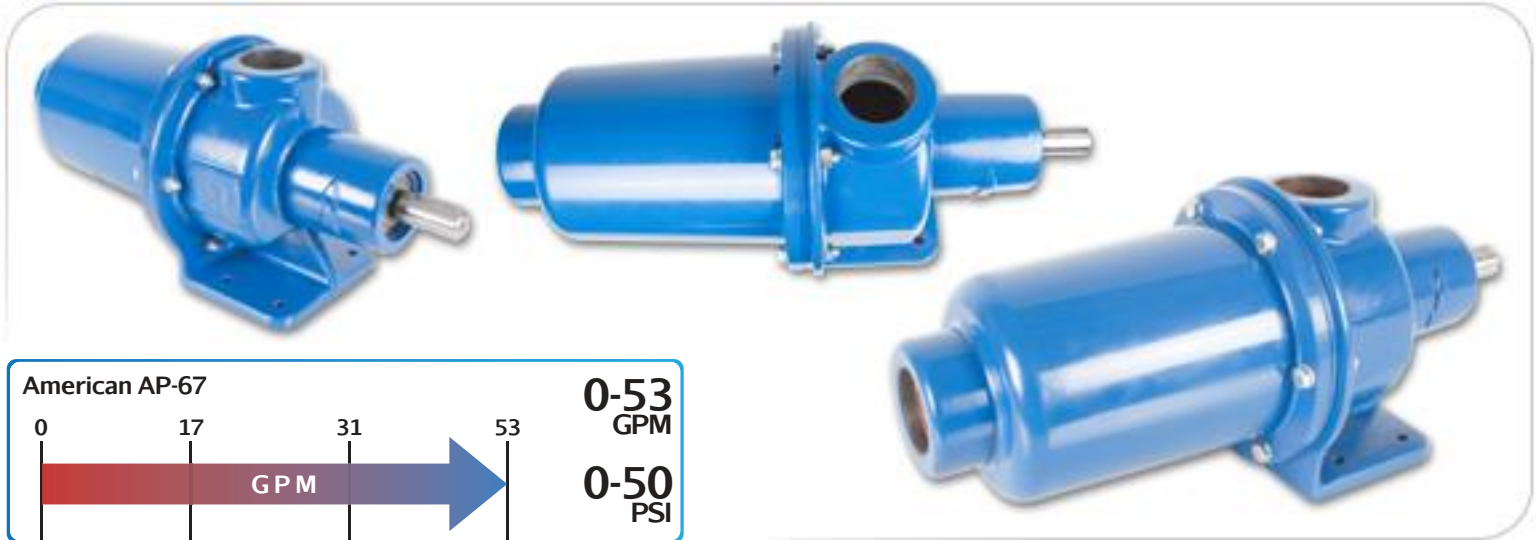
P: 847.640.7867 F: 847.640.7855  
2525 Clearbrook Drive Arlington Heights, IL 60005

[www.libertyprocess.com](http://www.libertyprocess.com)



# AMERICAN SERIES - AP-67

Wobble Stator Progressive Cavity Pump



American AP-67



0-53  
GPM

0-50  
PSI

## Features

- Low Cost
- Low Shear
- Solids Handling
- Compact Design
- Direct Motor Speeds
- Gear Reduction Options

## Materials

**Rotor:** *Stainless Steel Chrome-Plated*

**Stator:** *Buna, Viton™, EPDM*

**Motor:** *2 hp*

**Inlet:** *2"*

**Outlet:** *2"*

**Bases:** *Steel or Stainless Steel*

## Pump Description

The American AP Progressive Cavity Wobble Stator Pump Series from Liberty Process Equipment offers the best value available on the pump market for a progressive cavity pump for flows up to 53 GPM and pressures up to 150 psi. The simple design of the wobble stator and just one universal joint give you the inherent advantages of a progressive cavity pump of low pulsation and shear, solids handling and viscous liquids at an affordable price.

The Long-Coupled and Close-Coupled Version is available in either Cast Iron or 316 Stainless Steel with standard Buna Nitrile Stator with options in Viton and EPDM and Stainless Internals with a hard-chrome plated rotor for long service life. In addition, the pump is available with a standard mechanical seal or can be upgraded to a hard-face mechanical seal for abrasion resistance. We also offer optional Gland Packing.

The American Pump Series is offered in a Long-Coupled design for mounting on a baseplate with a standard motor. All pumps are offered "off the shelf" from our inventory for immediate shipment.

## Curves

[Click Links Below](#)

**AP-67**

## Drawings

[Click Links Below](#)

**AP-67**



P: 847.640.7867 F: 847.640.7855  
2525 Clearbrook Drive Arlington Heights, IL 60005

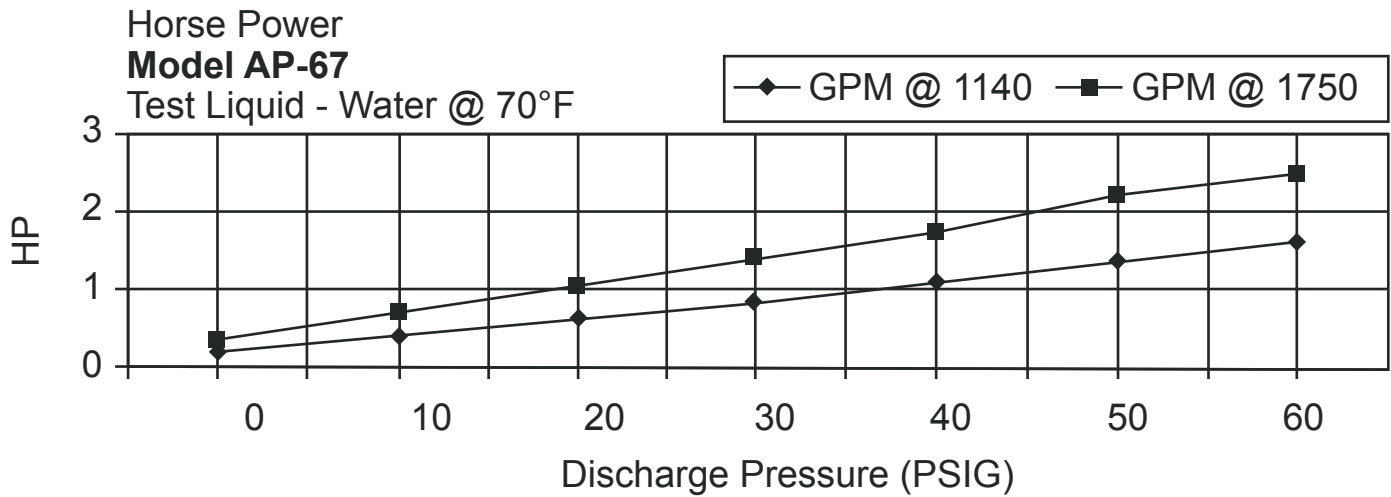
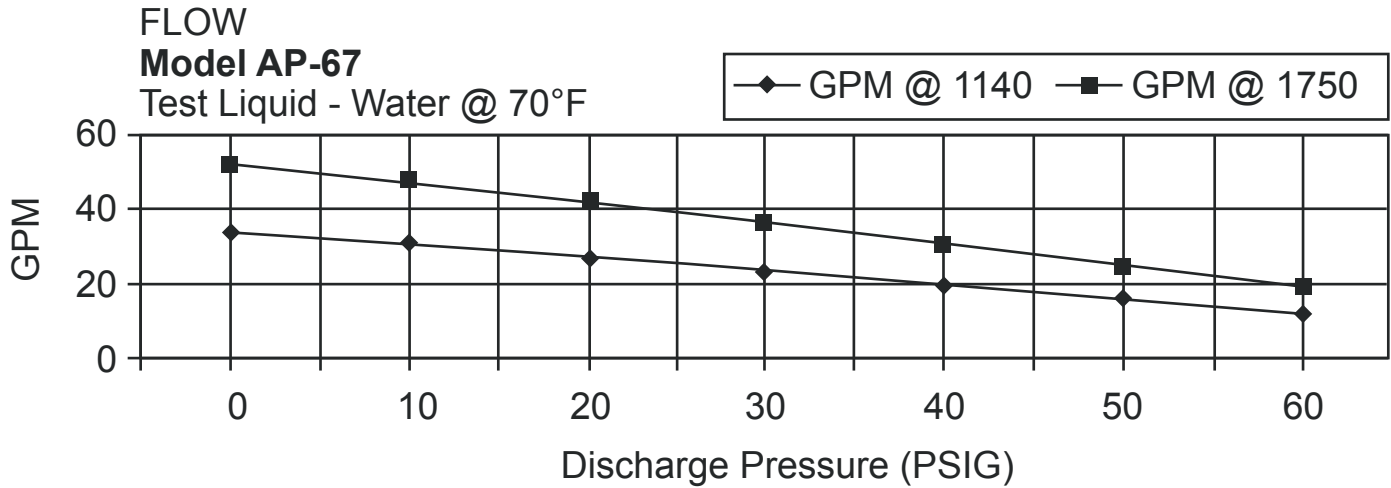
[www.libertyprocess.com](http://www.libertyprocess.com)



# AMERICAN SERIES - AP67

Progressive Cavity Pump

Performance Curves

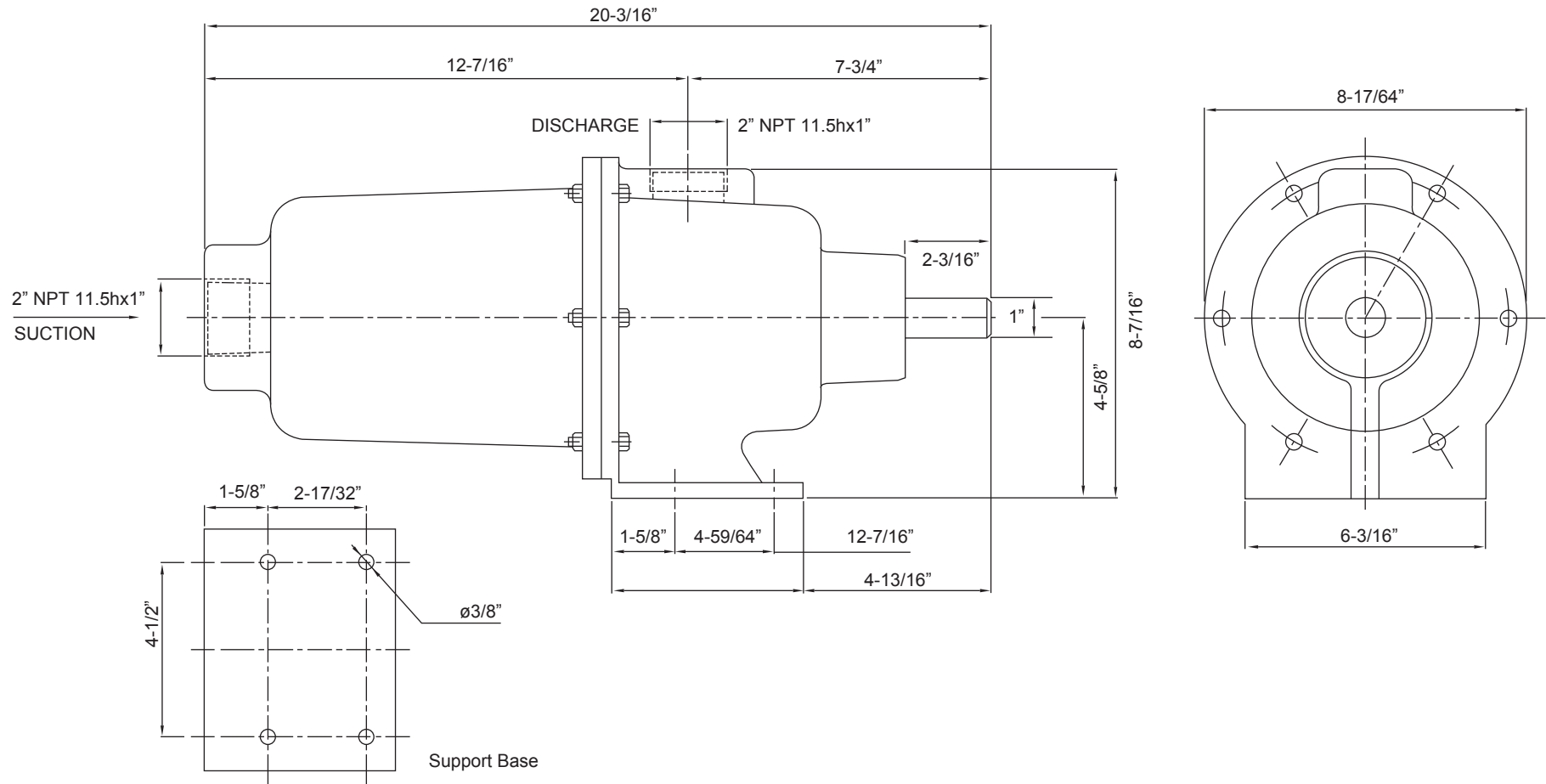




# AMERICAN SERIES - AP-67

Progressive Cavity Pump

Dimensional Drawings



BACK TO TOP

**Wobble Stator Pump**

Net weight

≈ lbs.

**60**

Inches

P: 847.640.7867 F: 847.640.7855  
2525 Clearbrook Drive Arlington Heights, IL 60005

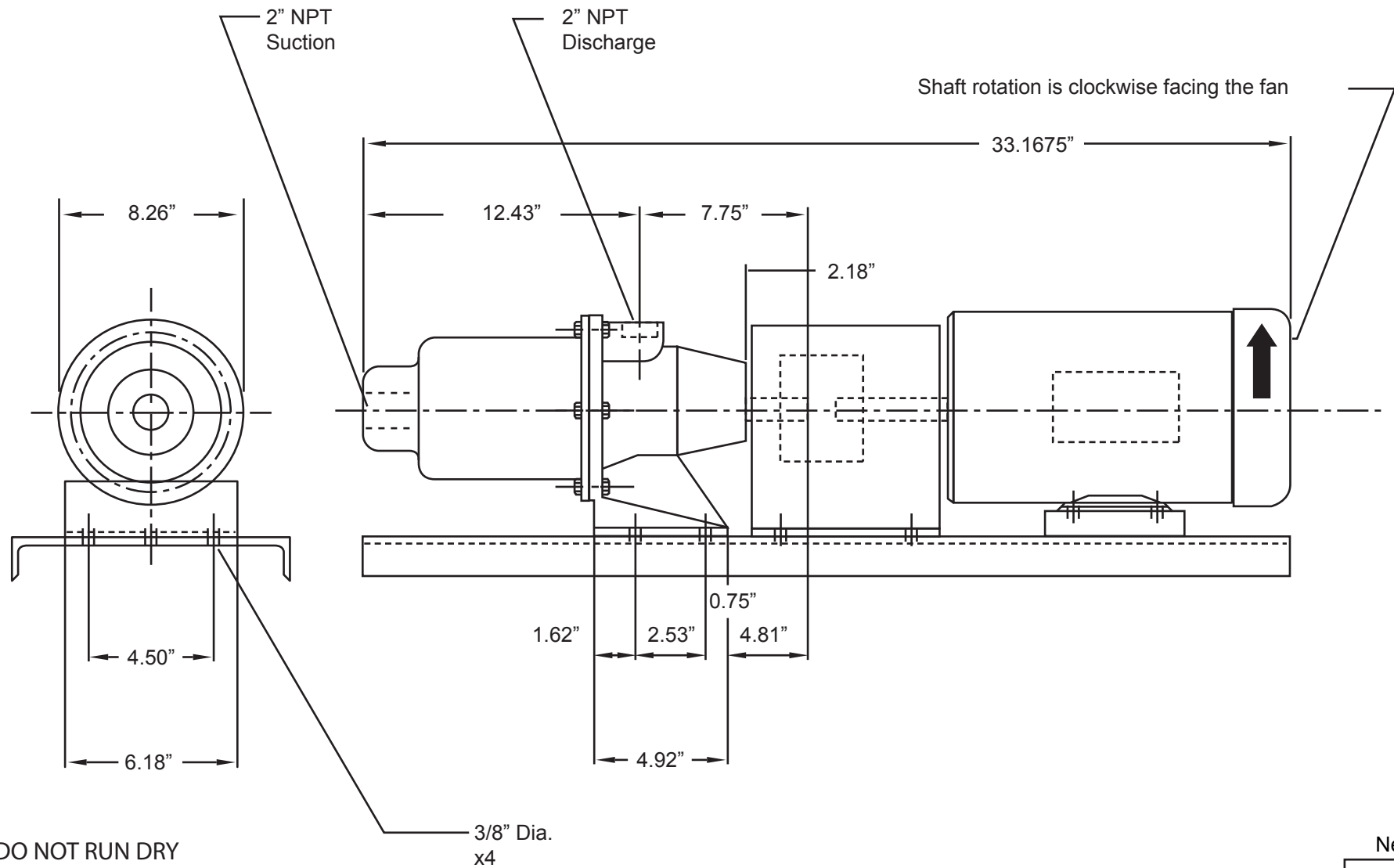
[www.libertyprocess.com](http://www.libertyprocess.com)



# AMERICAN SERIES - AP-67 COMPLETE PACKAGE

Progressive Cavity Pump

Dimensional Drawings



ALL DIMN: Inches

P: 847.640.7867 F: 847.640.7855  
2525 Clearbrook Drive Arlington Heights, IL 60005

[www.libertyprocess.com](http://www.libertyprocess.com)

**Wobble Stator Pump**