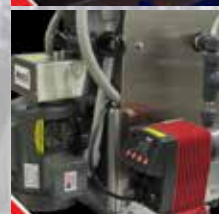


A measured step forward™

Product Range



Metering Pumps

Solenoid pumps and stepper motor pumps



MAGDOS Series (LB, LD, LA, LK, LP)

From the most basic model, the **MAGDOS LB**, to the most advanced technology featured within the **MAGDOS LP**, choose the model that perfectly fits your application.

The Magdos Series is available in seven sizes. State-of-the-art features include:

- Capacity range 0.14 to 3.96 gph, up to 232 psig
- Universal power supply unit 110-240 V, 50/60 Hz, IP65

- PVC, PP, PVDF or SS head materials
- Graphical display with multi-language menu
- External control via standard signal 0/4 - 20 mA
- Batch dosing with interval and timer functions
- Diaphragm rupture detection for leak monitoring
- Level input with early warning and main alarm
- Double ball check-valves for highly accurate dosing
- Ethernet interface
- CSA and UL certified

MAGDOS Series L	05	1	2	4	6	10	15
Max Pressure (psig)	232	232	232	232	116	87	43
Capacity (gph)	0.14	0.29	0.60	1.0	1.79	2.64	3.96



MAGDOS DE/DX

The **MAGDOS DE/DX** line of solenoid driven metering pumps combines the advanced digital technology of microprocessors with the durability of high-quality mechanics.

- Manual stroke length control 0-100% and internal pulse/stroke frequency adjustment control
- External pulse control by water meter or other voltage free contacts
- Connection for level control with alarm signal

- DX: External control by 4-20 mA or 0-20 mA signal
- DX: Pulse multiplication and division
- Wetted end selections:
 - PVC, PP, PVDF or SS head materials
 - PTFE coated EPDM diaphragm
 - CSM, FPM or PTFE seals

Optional:

- Low level warning alarm (2 level alarm)
- Digital display indicates stroke frequency, operating and alarm conditions

MAGDOS Series DE/DX	01	03	07	2	4	8	12	20	40	100
Max Pressure (psig)	150	90	150	150	150	150	60	150	60	30
Capacity (gph)	0.03	0.12	0.20	0.50	1.0	1.6	2.8	4.7	12.7	27.7



MEMDOS SMART Series (LB, LD, LK, LP)

The **MEMDOS SMART Series**, a series of compact stepper-motor pumps, combines the big advantages of a solenoid-driven metering pump with the precision of a motor-driven diaphragm metering pump.

The MEMDOS SMART Series is available in five capacity ranges. Features include:

- Capacity range 0.68 to 5.20 gph, up to 290 psig (232 for PVC)
- Universal power supply unit 110-240 V, 50/60 Hz, IP65

- Intelligent drive stepper-motor concept
- Microprocessor controlled drive
- Graphical display with multi-language menu
- PVC, PP, PVDF or SS head materials
- Level input with early warning and main alarm
- 2 Slow Motion modes for dosing highly viscous media
- Batch dosing with interval and timer functions
- Diaphragm rupture detection for leak monitoring
- Ethernet interface
- CSA and UL certified

MEMDOS SMART	2	5	10	15	20
Max Capacity (gph)	0.68	1.58	2.98	3.88	5.20
Max Pressure (psig)	290*	217	130	72	58

*232 for PVC

Metering Pumps

Motor driven mechanically actuated metering pumps

MEMDOS LB

The **MEMDOS LB** reliably and precisely conveys media such as acids, lyes, coagulants and flocculants thanks to the sturdy tappet drive with manual or automatic capacity adjustment.

MEMDOS LB pumps can be supplied with a double diaphragm system and are used when the integration of the pump into controls or control circuits is required.

- Capacity range 1 to 344 gph, up to 232 psig
- Infinitely variable stroke frequency from 0 to 100%
- Tappet drive with manual and automatic capacity adjustment
- Materials available: PVC, PP, PVDF and stainless steel
- Compact design, low space requirement
- Non-leaking
- A variety of 3-phase & 1-phase motors are available
- Double-diaphragm system (optional)
- ATEX versions for Zones 1 and 2 are available



MEMDOS LB	4	4HP	10	10HP	20	20HP	35	60	80	110
Max Pressure (psig)	174	232	174	232	174	232	145	145	72	145
Capacity (gph)	1.0	2.2	2.9	6.0	5.0	9.6	9.8	16.4	21.9	29.3
MEMDOS LB	150	160	210	260	310	400	510	760	1010	
Max Pressure (psig)	72	145	116	116	87	87	72	72	58	
Capacity (gph)	36.7	40.7	57.9	72.4	84.3	105.1	143.7	204.2	287.5	

MEMDOS E/DX

The **MEMDOS E/DX** is a state-of-the-art mechanically actuated diaphragm pump, ideal for municipal chemical feed applications. Due to its rugged and compact design, this versatile line meets a variety of process requirements. The base model, MEMDOS E, is a manually operated version. For applications requiring control by an external control signal, the MEMDOS DX offers an intelligent microprocessor control. By utilizing this control, the MEMDOS DX eliminates the need for the further expense of additional variable speed controllers.

- Manual stroke length adjustment 0-100%

- Standard motors: Single and 3-phase TE motors
- Wetted end selections:
 - PVC, PP, PVDF or SS head materials
 - PTFE coated EPDM diaphragm
 - CSM, FPM or PTFE seals

Optional:

- Digital display with electronic diagnostics
- Alarm output
- Double diaphragm design
- Diaphragm leak detection
- Double ball and single spring-loaded check valves
- Automatic 4-20 mA stroke length control (E version)



MEMDOS Series E/DX	4	8	15	26	50	76	110	156	160	200	300
Max Pressure (psig)	150	150	150	150	150	150	75	60	150	150	125
Capacity (gph)	1.2	2.3	4.7	6.0	15.2	19.0	33.8	42.2	49	66	92

2300 Series

The **2300 Series** is a robust, mechanically actuated diaphragm pump used for a broad range of flow requirements. Ideal for water and wastewater treatment applications, due to its rugged and compact design.

- Internal stroke length adjustment 0-100%
- Standard motors: Single or 3-phase TE/XP motors
- Wetted end selections:
 - PVC, PP, PVDF or SS head materials
 - PTFE coated EPDM diaphragm
 - CSM, FPM or PTFE seals

Optional:

- Automatic stroke length control
- 4-step pulley offers wide choice of speeds
- Double diaphragm design
- Diaphragm leak detection
- Double ball and single spring-loaded check valves
- AC or DC speed control



2300 Series	2311	2321	2331	2341	2351	2361	2371	2381	2391
Max Pressure (psig)	150	150	150	150	150	150	75	75	60
Simplex Capacity (gph)	17	28	43	51	76	92	139	203	310
Duplex Capacity (gph)	34	56	86	102	152	184	278	406	620

Metering Pumps

Motor driven hydraulically actuated metering pumps

1700 Series

The **1700 Series** is a heavy-duty, hydraulically actuated tubular diaphragm pump. This series is designed for both high and low pressure applications, where corrosive liquids or slurries are metered. The simple, yet unique vertical hydraulic system, eliminates any need for complicated vent and refill mechanisms. Its prestressed tubular diaphragm handles inconsistent suction conditions and provides suction lift capabilities to 16 feet.

- Manual micrometer stroke length control
 - Standard motors: Single or 3-phase TE/XP motors
 - Wetted end selections:
 - - PP, SS or Alloy 20 head material
 - - CSM or FPM tubular diaphragm
 - Internal hydraulic relief valve to protect pump
 - Easy maintenance cartridge type check valves
- Optional:**
- Polyurethane seats for activated carbon
 - Tungsten carbide check valves
 - Automatic stroke length control (AEI/API)
 - Internal back pressure valve
 - Diaphragm leak detection
 - AC or DC speed control

1710 Series	Plunger Diameter			
	1/2"	3/4"	1"	1.4"
Max Pressure (psig)	2000	1000	400	200
Capacity (gph)	4.8	10	20	80

1730 Series	Plunger Diameter			
	1/2"	1"	1-1/2"	2"
Max Pressure (psig)	3000	750	300	150
Simplex Capacity (gph)	10	50	120	220
Duplex Capacity (gph)	20	100	240	440

1740 Series	Plunger Diameter
	2"
Max Pressure (psig)	250
Simplex Capacity (gph)	410
Duplex Capacity (gph)	820
Triplex Capacity (gph)	1230
Quadruplex Capacity (gph)	1640



Metering Pumps

Motor driven hydraulically actuated and peristaltic metering pumps

5700 Series

The **5700 Series** is a non-lost motion hydraulically actuated diaphragm pump. The unique rotary plunger concept has fewer moving parts, resulting in a long lasting durable service, less maintenance, and more power efficiency.

Its compact design saves floor space and still provides reliable, heavy duty delivery.

- Manual stroke length adjustment 0-100%
- Non-lost motion design
- Meets API 675 requirements
- Wetted end selections:

- - PP, SS, or Alloy 20 head material
- Flat PTFE diaphragm / PTFE seals
- Integral relief valve to protect pump
- Standard motors: Single or 3-phase TE/XP motors

Optional:

- Double diaphragm for process protection
- High suction lift capabilities to 16 feet
- AC or DC speed control
- Electric / pneumatic stroke length control

5700 Series	5701			5710			
Max Pressure (psig)	2000	1300	800	4000	3000	2500	1750
Simplex Capacity (gph)	3.8	5.9	13	7.7	12	20	33
Duplex Capacity (gph)	7.6	12	26	15	23	41	67

5700 Series	5720			5730		
Max Pressure (psig)	940	680	500	350	370	260
Simplex Capacity (gph)	41	63	81	125	171	344
Duplex Capacity (gph)	82	126	162	250	342	688



PERIDOS Series

Leakage, clogging or blockage of conventional positive displacement pumps which incorporate seals, valves, rotors or vanes can be a regular and expensive occurrence.

The **PERIDOS Series** of peristaltic metering pumps contains the fluid in a tube, requiring only one component to be changed, which means that maintenance costs are considerably lower than with other pump types. Increased plant productivity, substantially lower cost of repair and ownership with quick and easy maintenance are the result.

Exceptional self-priming capabilities combined with low shear product quality make the PERIDOS series an ideal choice for hard-to-handle chemicals.

- Flows up to 1548 gph, Pressures up to 100 psi
- Continuous dry run capability
- Lowest cost of ownership
- Quick and easy maintenance
- Wide range of tubing available
- Seal-less pumping technology
- Self-priming – suction lifts up to 30 ft
- No check valves – few moving parts
- User-selectable manual or automatic control
- Automatic control via 0-10VDC, 4-20mA or RS485
- Gear motors or variable speed motors, both TEFC and explosion are available

PERIDOS Series	2	3	5	6	8	10
Tube Size (ID, in mm)	1.6	3.2	4.8	6.4	8.0	9.6
Max Pressure (psig)	100	100	80	60	30	30
Capacity (gph) - 90 Hz	0.004-0.64	0.02-2.68	0.04-5.85	0.07-10.56	0.10-15.69	0.14-20.54
Capacity (gph) - 75 Hz	0.013-1.57	0.05-6.56	0.12-14.30	0.21-25.80	0.31-38.36	0.41-50.21

PERIDOS XL Series	9	13	17	25	30	45
Tube Size (ID, in mm)	8.89	12.95	17.01	24.89	29.97	44.95
Max Pressure (psig)	30	30	20-45*	30-36	30-60	40-60
Capacity (gph)	7-18	19-56	41-165	102-354	210-846	426-1548



*Higher pressure capability with heavy duty fiber braided hose

Centrifugal Pumps

Products you can rely on



Lutz-JESCO's CENTRAN™ - Magnetic Drive Centrifugal - pumps are the ideal complement to our product range. The pumps are designed and built to address our customers' needs and concerns with regard to safety, cost, diversity, and the environment. From the smallest TMB series to the high capacity G3 series, we have taken the same care to provide you with reliable Lutz-JESCO quality products.

The choice of engineered plastics and differentiated bearing materials allows for great flexibility in the handling of highly aggressive chemicals. The use of Neodymium-Iron-Boron magnets in the CENTRAN™ TMR G2/G3 series permits the pumping of high temperature liquids and gives a longer service life under harsh conditions.

The sealless design means greater environmental safety and no system downtimes, common to pumps with mechanical seals. In addition, the TMR G2/G3 series has a patented self-aligning mechanism to prevent any damage caused by dry-running or incipient cavitation.

The Lutz-JESCO CENTRAN™ series of magnetic drive centrifugal pumps is used in many different industry sectors, with flow rates ranging from 4 gpm up to 210 gpm.

We look forward to providing you with a suitable solution to all of your fluid handling needs.



CENTRAN™ TMR G2/G3 Series

With the CENTRAN™ TMR series, Lutz-JESCO offers a reliable magnetically coupled pump with a patented bi-directional, self-alignment system that easily handles critical suction conditions caused by pressure loss. When used together with the "R" bearing system, the pumps are suitable for dry running. The TMR series is designed for medium to large pumping capacities at higher system pressures.

Pump capacity: up to 210 gpm
Head pressure: up to 160 ft.



CENTRAN™ TMP Series

CENTRAN™ TMP™ series pumps are magnetically driven, centrifugal pumps with a horizontal axis and close-coupled, with the bodies built entirely of reinforced thermoplastic polymers. The internal components are ceramic oxides, HD carbon, and fluorinated elastomers: which mean any contact of metallic parts with the pumped fluid is avoided.

Pump capacity: up to 62 gpm
Head pressure: up to 60 ft.



CENTRAN™ TMB Series

The CENTRAN™ TMB series is specifically designed for installations in small systems and equipment. The sturdy construction and reduced dimensions make the TMB series suitable for many OEM applications.

Pump capacity: up to 18.5 gpm
Head pressure: up to 35 ft.

Centrifugal Pumps

For a variety of applications

Advantages of Lutz-JESCO Centrifugal Pumps

■ Sealless

The impeller is driven by the magnetic force of the outer magnets, therefore no mechanical seal is required. As the pump housing is hermetically sealed, no leakage can occur.

■ Different bearing systems for different needs

Bearing materials of carbon, ceramic, silicon carbide and Rulon® make it possible to configure the pumps individually for a variety of difficult operating conditions, such as dry running, suspended solids, or highly aggressive media.

■ Operating safety and high level of efficiency

The use of high-performance permanent magnets ensures high transmission forces even at elevated temperatures. The design of the bearing system and the use of compatible materials reduces energy loss through friction.

Benefits for the Customer

■ Power and efficiency

The maximum level of efficiency through optimized hydraulics results in lower power requirements.

■ Long service life

The use of high quality materials ensures a long service life of the pumps.

■ Easy to maintain

The limited number of components and wear parts can be replaced without special tools, thus reducing maintenance costs and lengthy downtimes.

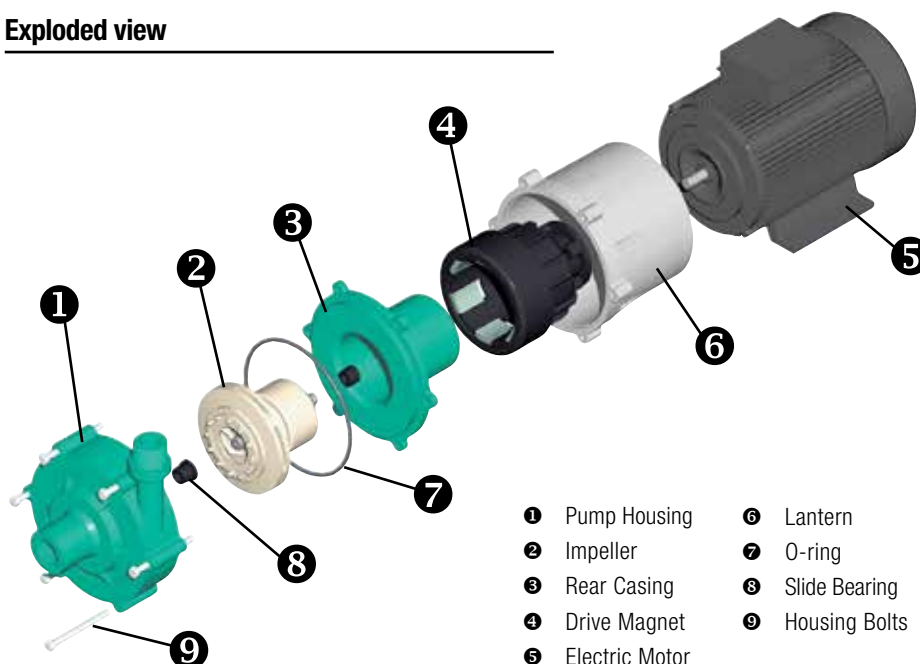
■ Designed for pumping virtually any chemical

CENTRAN™ Centrifugal pumps are designed to handle virtually any chemical, including acids, bases, mixtures of acids and bases, solvents, alkali stripping baths, galvanic baths, photo-chemicals, as well as radioactive, sterile, and highly corrosive liquids.

Typical Applications

- Water- and Wastewater treatment industry
- Galvanic / surface processing industry
- Dyeing and etching systems
- Electroplating and silver recovery
- Chemical industry
- Toxic liquids
- Graphic art machinery
- Medical equipment
- Photo industry
- Corrosive chemicals
- Metalwork machinery
- Fungicides and pesticides
- Refrigerators / Ice making machines
- Pure water (demineralized)
- Descaling
- Aquariums
- Laundry
- Cosmetic industry

Exploded view



Operating Principle

The magnetic coupling consists of two magnetic rotors, separated from each other by a closed rear casing. The drive magnet positioned on the motor shaft transfers the torque of the motor via a rotating magnetic field to the inner rotor enclosed in the rear casing. Depending on the pump design, the driven rotor is directly or indirectly connected with the impeller. Thus, the impeller is driven without the need of a shaft seal. A static seal between the pump housing and the rear casing prevents the occurrence of any leakage.

AODD Pumps

Products you can rely on

Lutz-JESCO's AIRTRAN™ - Air Operated Diaphragm Transfer - pumps are a natural complement to the Lutz-JESCO range of pumps.

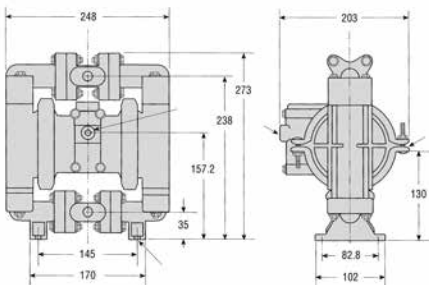
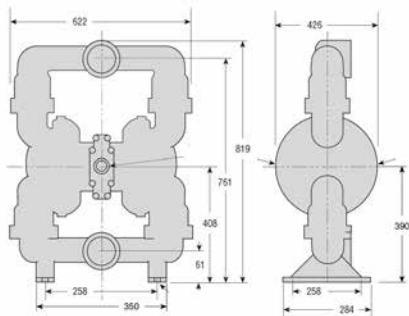
Similarities to our existing range of pumps include their simplicity, versatility, and both ease of handling and maintenance.

Lutz-JESCO AIRTRAN™ pumps are available in many different sizes and materials of construction to suit all of your application needs. Both clamped and bolted versions are available.

The pump range comprises a 1/4" size, all the way to a 3" size.

Lutz-JESCO AIRTRAN™ pump housings are available in Polypropylene, PVDF, Nylon, Conductive Nylon, Aluminum and Stainless Steel, the membranes, ball valves and o-rings are available in Teflon®, FKM (Viton®), Geolast® (Buna-N) and Santoprene®.

Pump capacities go up to 255 GPM with maximum air pressures up to 120 PSI.



Advantages of Lutz-JESCO Diaphragm Pumps

- Absolutely lube free valve
- Corrosion free materials of construction
- Non-stalling function at low pressures
- Conductive materials available
- No close fitted or rotating parts
- Can safely run dry
- Variable pressure and speed
- No generated heat due to the absence of an electric motor
- Minimal product shear
- Self-priming, dry or wet
- No dynamic seals
- Portable
- Continuous running
- Can handle abrasive solids

Benefits for the Customer

- High compatibility of parts
- Reduced stock of spare parts
- Service-friendly construction
- High dependability through modern valve technology
- Hermetically sealed system
- Low wear of parts
- Easy assembly and disassembly
- No leakage and contamination in the compressed air system due to an improved air valve
- Reduced operating costs
- Gentle pumping of liquids and pastes

AODD Pumps

For a variety of applications

LJ 1/4"

For the laboratory sector, small plants, requirements with small delivery volume at relatively high pressure.

Delivery rate: up to 4.3 GPM
 Delivery head: up to 100 PSI
 Materials: PP, PVDF, Nylon

LJ 3/8"

Ideal for inks, paints, adhesives, waste oil, coolant recycling, and other specialized applications.

Delivery rate: up to 9 GPM
 Delivery head: up to 120 PSI
 Materials: PP, PVDF, Nylon

LJ 1/2"

200-l-drum pumping, ink recirculation and feed, chemicals, solvents, acids, soap dispensing.

Delivery rate: up to 14 GPM
 Delivery head: up to 120 PSI
 Materials: PP, PVDF, Nylon, Aluminum, Stainless Steel

LJ 1"

Drum and small tank transfer, pickling solutions, chemical feed.

Delivery rate: up to 48 GPM - metallic
 up to 41 GPM - plastic
 Delivery head: up to 120 PSI
 Materials: PP, PVDF, Nylon, Aluminum, Stainless Steel

LJ 1 1/2"

Filter press, tank cleaning systems, pigments and resins.

Delivery rate: up to 115 GPM - metallic
 up to 130 GPM - plastic
 Delivery head: up to 120 PSI
 Materials: PP, PVDF, Aluminum, Stainless Steel

LJ 2"

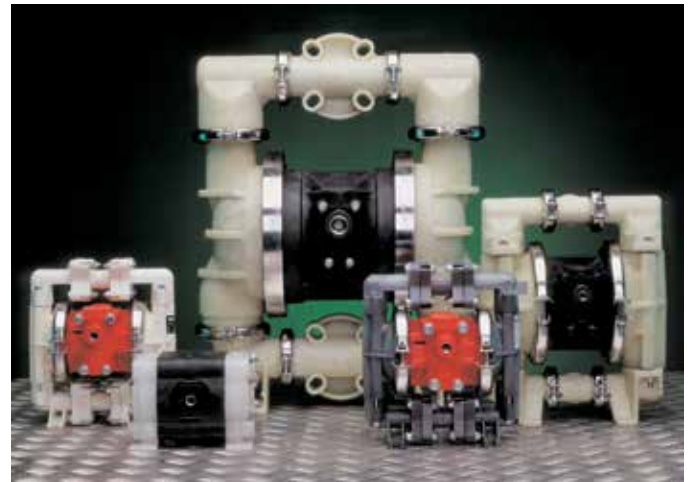
Paint, latex, ceramic slip, slurries, polymers, tank car fill and empty, foods.

Delivery rate: up to 190 GPM - metallic
 up to 180 GPM - plastic
 Delivery head: up to 120 PSI
 Materials: PP, PVDF, Aluminum, Stainless Steel

LJ 3"

Paint, latex, ceramic slip, slurries, polymers, tank car fill and empty.

Delivery rate: up to 255 GPM
 Delivery head: up to 120 PSI
 Materials: Aluminum



Size

LJ 1/4"

LJ 3/8"

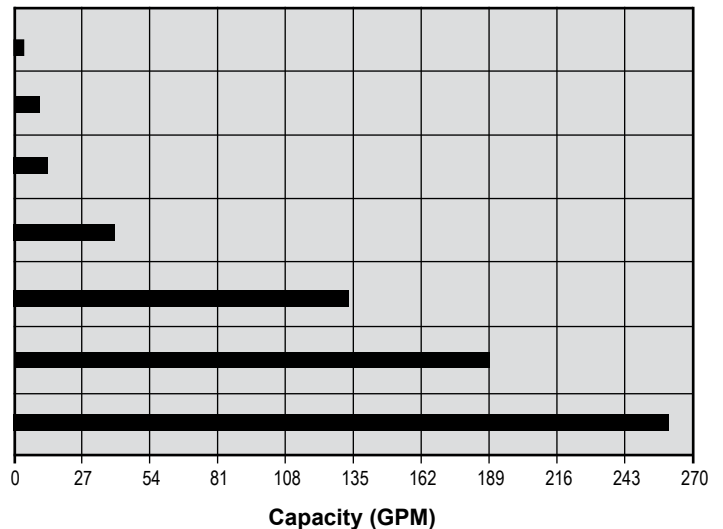
LJ 1/2"

LJ 1"

LJ 1 1/2"

LJ 2"

LJ 3"



Measuring and Control Technology



Totally universal

Lutz-JESCO controllers can be used in a variety of applications as they have been designed as universal controllers.

Automatic measuring and control systems ensure the right water quality in modern water treatment. All required functional elements can be mounted on the sampling stations ready for connection.

Due to the great variety of our products we are able to supply the appropriate sampling station for each application.

- Free chlorine measuring and controller device
- Hydrogen peroxide controller device
- pH value measuring and controller device
- ORP measuring and controller device
- Chlorine dioxide measuring and controller device

TOPAX®

The TOPAX® controllers can be used in numerous applications due to their modular design. Since a wide range of sensors for measuring water parameters can be directly connected, the TOPAX® DX easily satisfies all the requirements for optimum water treatment. Measured data can be displayed in the installed screen writer at different zoom levels and then saved to an integrated multimedia card. This card can be read at any time on a PC for archiving.

- Large TFT monitor
- Installed screen writer
- Display of the available disinfecting power depending on the pH value
- Controlled start-up
- Logbook function, saves all events such as calibration data, etc.
- Plausibility check during calibration



- Display of the quality of the single-rod measuring chain during calibration
- pH value compensation of the chlorine value
- Temperature compensation of the pH value
- Sensor monitoring, alarm if sensor fails
- Clear text operator guidance
- Contextual online help
- Actuation and control of systems to reduce the bonded chlorine and to meter brine
- Electrically isolated current outputs
- Electrically isolated inputs
- Autoadaptation
- ECO mode
- Real time clock with two separate timers for automatic actuation of ECO mode
- "DIN" contact

Polymer Feed Systems

Trusted and Proven

Improved and refined over 15 years, the LJ-PolyBlend® Series system is the most popular liquid polymer feeder ever offered, with over 10,000 units at work around the world. Combining this technology with your trusted brand of Lutz-JESCO dosing pumps, the LJPB Series is the next generation of polymer feed.

Compact and Portable

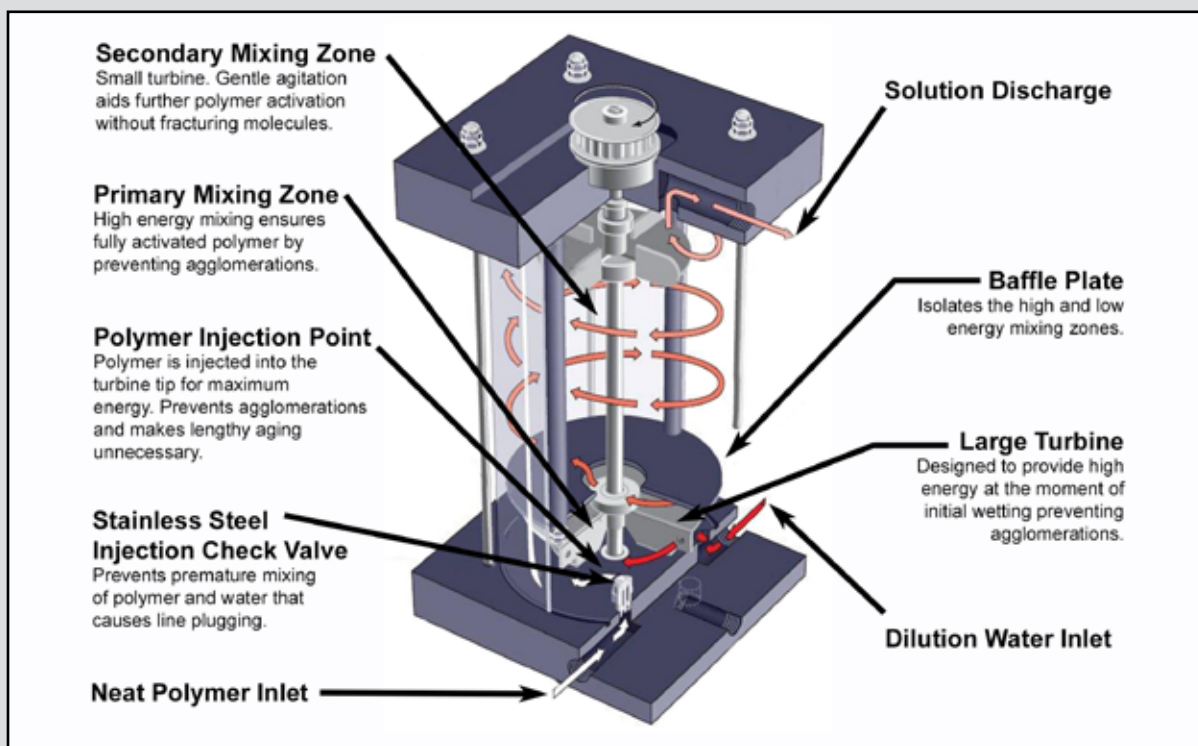
The LJPB Series system is compact. Its footprint is only 1 to 1.5 square feet depending on frame size. It is lighter than most other polymer feeders, making it ideal for portable use or where intermittent use requires the system to be stored in one location and used in another.

The Right Energy at the Right Time

The patented multi-zone mix chamber provides uniform dispersion energy at the moment of initial polymer wetting. This high energy mixing prevents agglomerations, eliminating the need for extended mixing and aging time. The partially swollen polymer then enters a low energy zone where activation continues without the destruction associated with batch mixing.

More for Less

Replacing a batch mixing or static mixer system with a LJPB Series system results in reduced polymer consumption (20-50%) and improved performance. Polymer use is reduced by eliminating agglomerations (wasted polymer) and fractures (broken molecules). Improved performance is realized by exposing more charge sites.



Chemical Feed Systems



General Description

Lutz-JESCO America Corp. offers a wide range of complete “Turn-key” Chemical Feed Systems. Customers can choose from one of our standard, pre-engineered systems for common applications, or talk to us about a custom-engineered system to precisely meet all specifications.

Advantages

Buying a complete Chemical Feed System from Lutz-JESCO offers many advantages over buying separate components and configuring the system yourself. Lutz-JESCO:

- designs, assembles, and tests every component in-house, so we take responsibility for the entire system. Your Chemical Feed System arrives completely assembled and thoroughly tested, saving you both valuable time and money.
- uses its own pumps, accessories, and equipment to ensure consistent design and highest quality.
- makes the system installation and start-up simple, just two connection steps are required: providing power to the pump and completing the suction and discharge connections.
- delivers all systems fully assembled, which allows for easy access to all components, making routine maintenance and upkeep easy.
- creates Chemical Feed Systems that are designed by our highly experienced Engineering Department, using only the latest state-of-the-art 3-D Computer Aided Design (CAD) software.
- provides complete written Specifications and 3-D CAD Drawings, including Process & Instrumentation Drawings, System Layout & Design, and Operation & Maintenance Manuals, which makes it even easier for you to select and incorporate the right system for your specific application.
- Chemical Feed Systems reduce your costs, streamline documentation, eliminate construction delays, and reduce any start-up constraints.
- offers highly experienced start-up assistance, even on-site when requested.

Applications

Lutz-JESCO's Chemical Feed Systems are successfully used in a wide range of industrial and municipal markets, including:

- Greenhouse
- Pulp & Paper
- Petrochemical
- Cooling Towers
- Pharmaceutical
- Food & Beverage
- Water & Wastewater Treatment
- OEM
- Boilers
- Chemical
- Car Wash
- Power & Energy
- Swimming Pools
- Drinking Water Treatment

Chemical Feed Systems

Features

By working closely with the project engineer, Lutz-JESCO provides its extensive experience in the field of metering technology to offer you Chemical Feed Systems in a variety of options:

- CFS weldment materials: black UV protected HDPE, 316SS, PP, EPOXY coated steel
- Plumbing materials: 316SS, PVC, PP, PVDF
- Connections: NPT, sanitary, tubing
- Protection classes: NEMA 4X, explosion proof

Systems may include:

- Any combination of single or multiple metering or transfer pumps, including PERIDOS, AIRTRAN™ and CENTRAN™ pumps
- Tanks and Mixers
- Measuring and Control Equipment
- Closed polyethylene tank
 - 60 L / 15.8 gal
 - 100 L / 26.4 gal
 - 200 L / 52.8 gal
- Accessories:
 - Back pressure valve
 - Pressure relief valve
 - Pulsation dampener
 - Flow monitoring system (FLOWCON)
 - Automatic degassing device (Autovent)
 - Five function valve (PENTABLOC)
 - Injection nozzle
 - Calibration column
 - Autovent
 - Suction line with foot valve

Available chemical services include:

- Aluminum Sulfate
- Phosphoric Acid
- Aqua Ammonia
- Potassium Permanganate
- Calcium Hypochlorite
- Powder Activated Carbon
- Ferric Chloride
- Sodium Bisulfite
- Fluoride
- Sodium Hydroxide
- Hydrochloric Acid
- Sodium Hypochlorite
- Hydrogen Peroxide
- Sulfuric Acid
- Phosphate

Skid Mounted Systems

Skid Mounted Systems can accommodate larger pumps, making them ideal for larger flow applications. The systems are conveniently prepackaged on our custom-made skids and are ready for immediate use. The design allows the Skid to be mounted to the floor next to storage tanks, which is ideal for flooded suction and other applications. Skid Mounted Systems offer containment, controlling chemicals in case of leakage.

Tank Mounted Systems

Tank Mounted Systems give the customer chemical storage, metering, and mixing in one convenient package. Their portable design makes them not only ideal for temporary installations, but allows also for easy relocation as application needs may change. Tank mounted systems are conveniently prepackaged and ready for immediate use.



Wall Mounted Systems

Similar to Skid Mounted Systems, Wall Mounted Systems can accommodate larger pumps, making them ideal for larger flow applications. In addition, they also allow for smaller flow in a very space efficient design. Their small footprint makes them ideal for limited space as they are mounted directly above the chemical storage tanks. Their design also makes them easily accessible for maintenance.

Custom Systems

Lutz-JESCO also designs, within extremely competitive delivery terms, Chemical Feed Systems built precisely to the customer's specific application needs. All custom systems are fully tested and calibrated and include all supporting documentation. Custom designed Chemical Feed Systems can include any combination of single or multiple Metering or Transfer Pumps, including AIRTRAN™ AOD and CENTRAN™ Centrifugal Pumps, Accessories, Control Panels, Tanks and Mixers, and Measurement & Control equipment.

Accessories



Dry Feeders

Lutz-JESCO dry feeders are volumetric types and are equipped with hollow worms (lead screws):

- Used to provide accurate metering of bulk material required in chemical and process engineering

Additional equipment

- Thyristor controller, various frequency converters
- Suspensomat
- Nozzle Heating
- Base - for height adjustment
- Hoppers - for direct mounting upon request



Pulsation Dampener PDS

- Protects chemical feed systems and pumps from damaging vibrations and water hammer that are common in pump applications

- Unique in-line design efficiently dampens pressure pulses, creating a near pulse-less flow



Suction Controller DSR

The DSR is a settable suction line accessory that allows for:

- Maintaining suction pressure and pump accuracy when placed near the pump
- Preventing chemical spillage in case of suction line damage when installed near a storage tank



PENTABLOC

Multi-function valve which provides many different features:

- Back pressure to optimize pump accuracy
- Anti-siphon prevents undesired siphoning
- Pressure relief protects the pump against excessive pressure due to discharge line blockage
- Priming of the pump's feed line for start-up and (manual venting) maintenance
- Sight-flow-indicator



Autovent

- Automatically vents pump heads, crucial when effervescent fluids are metered
- Adjustable settings for venting frequency and duration



Priming Aid

- Recommended for small capacity pumps used in suction lift applications
- Collector contains chemical to overcome priming difficulties
- Built-in manual pump makes priming easy

FLOWCON

- The flow monitor senses and alarms when the pump fails to deliver the required flow-rate
- Responds in cases of reduced flow due to overpressure, system component failure or empty supply tank



Back Pressure Valve

- Ensures proper seating and closing of the pump check valves, which guarantees accurate pumping and prevents siphoning
- Required when down stream pressure is insufficient for maximum pump efficiency

Pressure Relief Valve

- A vital safety device for all chemical feed systems
- Avoids overpressure conditions by opening and releasing chemical back to the storage tank



Calibration Column

- Provides verification of pump performance by accurately measuring capacity



Injection Nozzle

- Enhances distribution of chemical into process lines
- Backflow is prevented when equipped with optional check valve



Suction Line

- Supports transportation of chemical from storage vessel to pump
- Integral foot valve keeps pump primed at all times
- Models with level switches provide an indication of supply tank low-level



Leak Detector

- Detects leakage in the event of diaphragm failure
- An alarm is given and the pump is switched off as soon as leakage within the pump occurs
- Provides automatic notification of the continuous discharge of aggressive media





Total Fluid Management

Lutz-JESCO is your reliable partner for all of your chemical feed/metering applications. From the single metering pump to the complete chemical feed system, we provide you with the appropriate Total Fluid Management solution.

Please contact us for more information!



Lutz-JESCO, Corp. · 55 Bernar Park · Rochester, NY 14624
Phone: (585) 426-0990 · Tollfree: (800) 554-2762 · Fax: (585) 426-4025
www.lutzjescoamerica.com