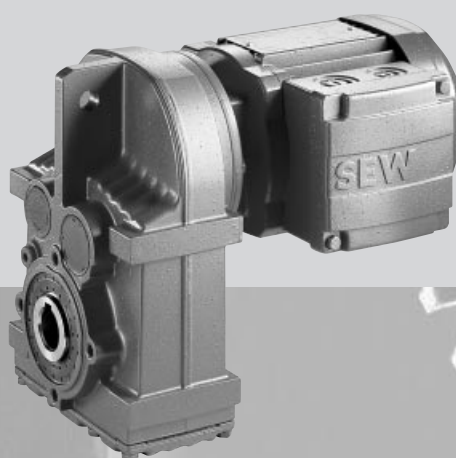


Latest News!

F27 Parallel Shaft Helical Gear Units

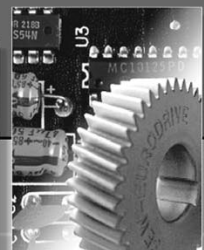
Edition

04/2001





SEW-EURODRIVE





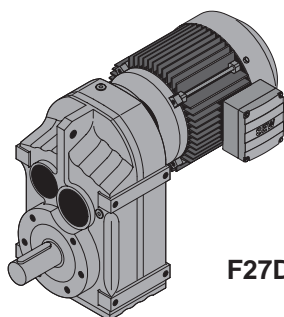
1	Available Versions	4
1.1	Torque of parallel shaft helical gear units	5
2	Your Advantages.....	6
2.1	Lightweight.....	7
2.2	Compact and space-saving	7
3	Dimension Drawings F..27	8



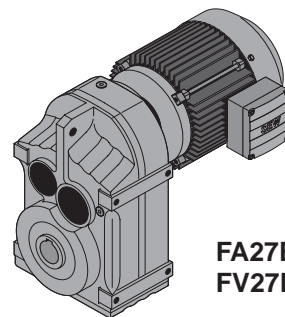
1 Available Versions

All design versions at a glance

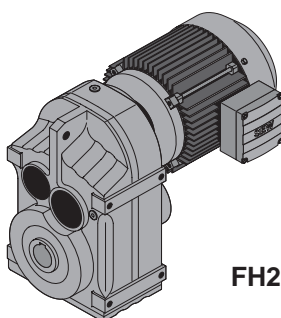
Designation	Design	Version
F27	Foot-mounted parallel shaft helical gear unit with solid shaft	
FF27		with B5 flange
FA27	Shaft-mounted parallel shaft helical gear unit with hollow shaft	
FA27B		foot-mounted
FAF27		with B5 flange
FAZ27		with B14 flange
FV27	Parallel shaft helical gear unit with hollow shaft and splining	
FV27B		foot-mounted
FVF27		with B5 flange
FVZ27		with B14 flange
FH27	Parallel shaft helical gear unit with hollow shaft and shrink disc	
FH27B		foot-mounted
FHF27		with B5 flange
FHZ27		with B14 flange



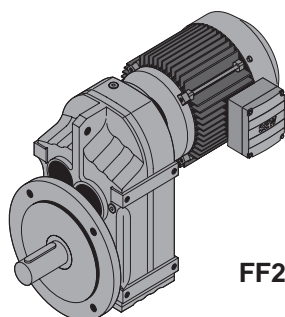
F27DR/DT..



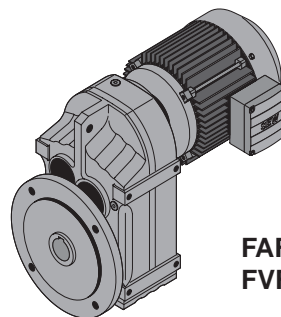
FA27B DR/DT..
FV27B DR/DT..



FH27B DR/DT..

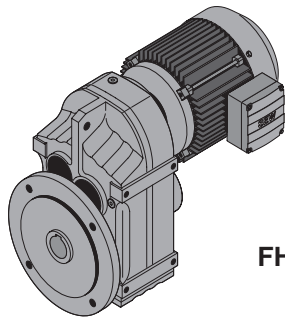
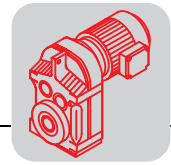


FF27DR/DT..

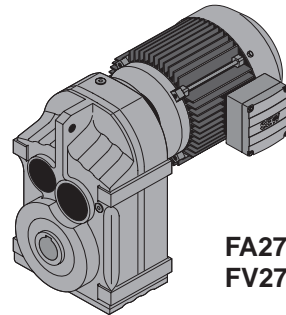


FAF27DR/DT..
FVF27DR/DT..

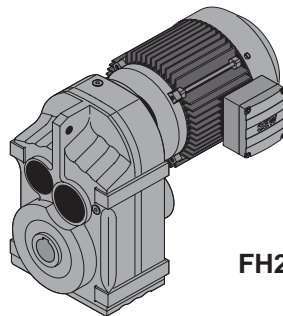
04747AXX



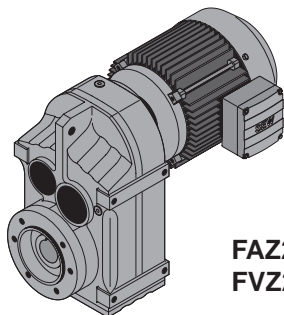
FHF27DR/DT..



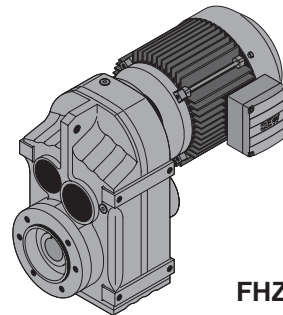
FA27DR/DT..
FV27DR/DT..



FH27DR/DT..



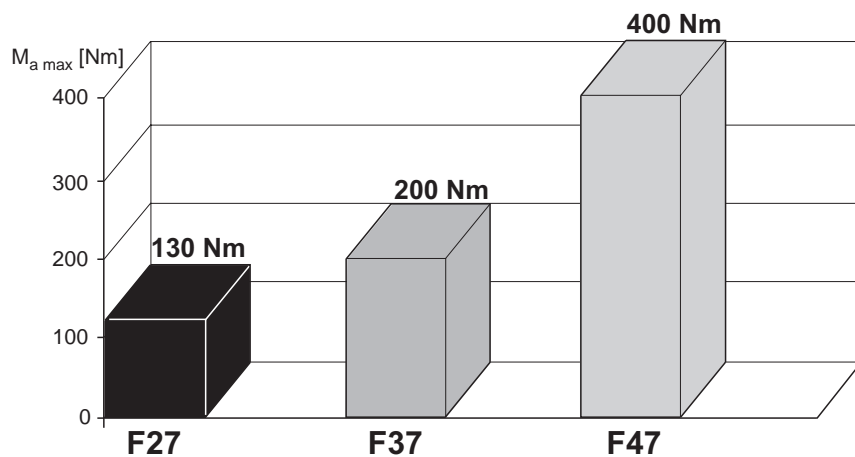
FAZ27DR/DT..
FVZ27DR/DT..



FHZ27DR/DT..

04748AXX

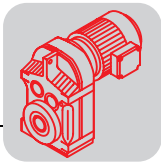
1.1 Torque of parallel shaft helical gear units



50281AXX

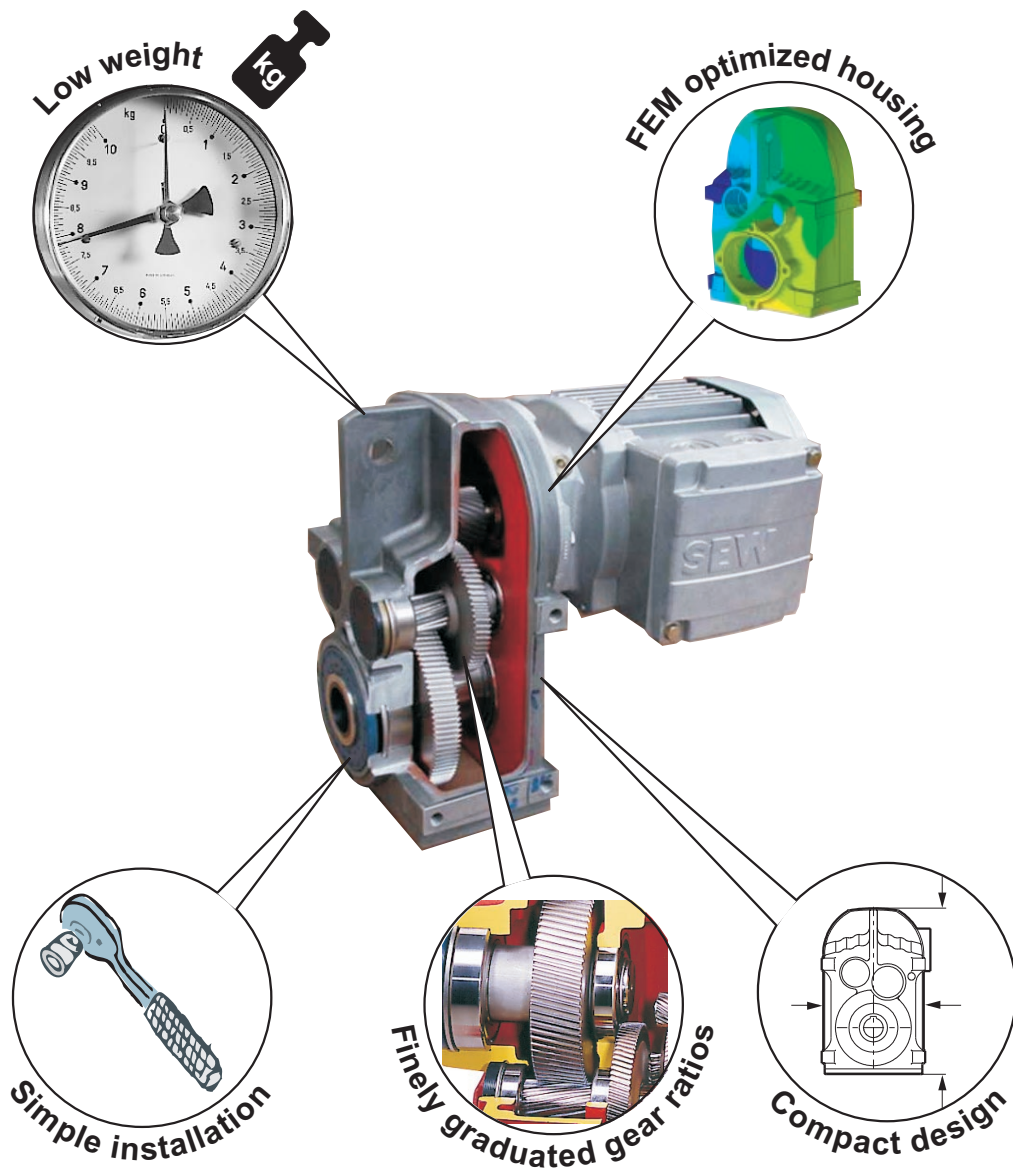
Your advantage

High maximum torque of 130 Nm, wide power range up to a maximum of 1.5 kW (DT90L4).

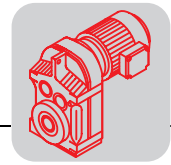


2 Your Advantages

- High approved torque of 130 Nm, motor power up to 1.5 kW (DT90L4)
- Compact and space-saving design
- Lightweight through the use of aluminium die cast alloy
- F27 is offered in many design versions
- Fine gear ratio graduation for exactly matched output speeds:
 - 2-stage: $i = 4.16 - 29.56$
 - 3-stage: $i = 33.83 - 140.74$
- High gear unit efficiency
- Favorable price



50287AEN



2.1 Lightweight

Example:

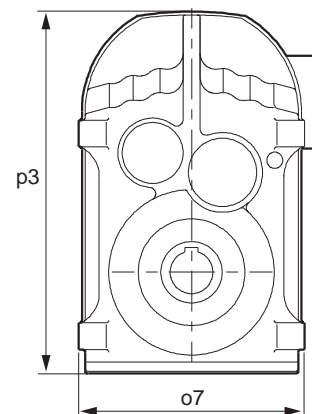
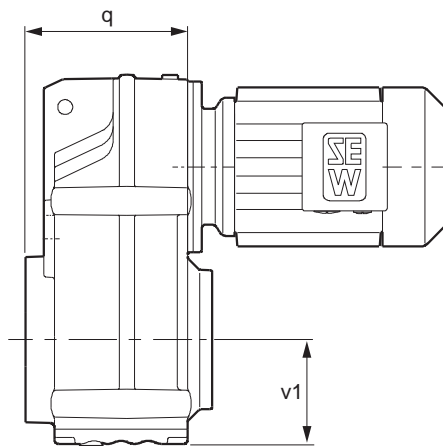


F..27 DR63S4 (0.12 kW)	
Weight [kg]	
F..	10
FF..	11
FA..	9.9
FAF..	11

Your advantages

- Lightweight through the use of aluminium die cast alloy
- Easier handling during startup and maintenance
- Significant weight reduction with drives travelling in parallel, thereby saving costs since the travel drives require less power
- Lower load stress at the drive train allowing for lighter construction and more cost-effective design of the complete system

2.2 Compact and space-saving

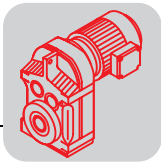


50280AXX

FA27	
[mm]	
Length q	95
Width o7	154
Height p3	223
Shaft height v1	60

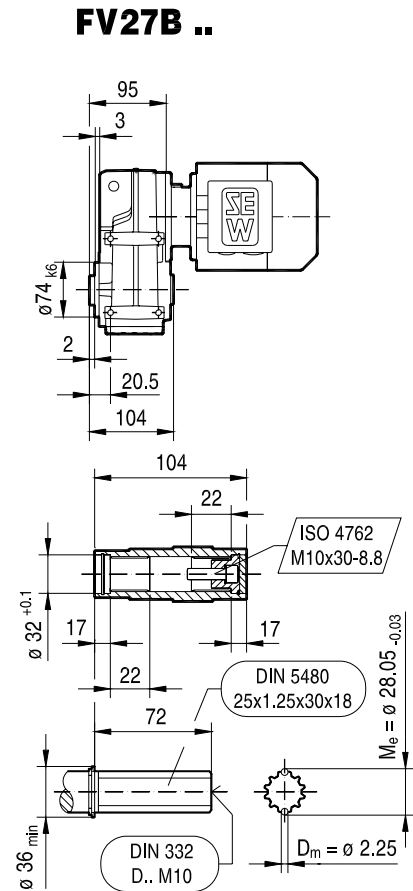
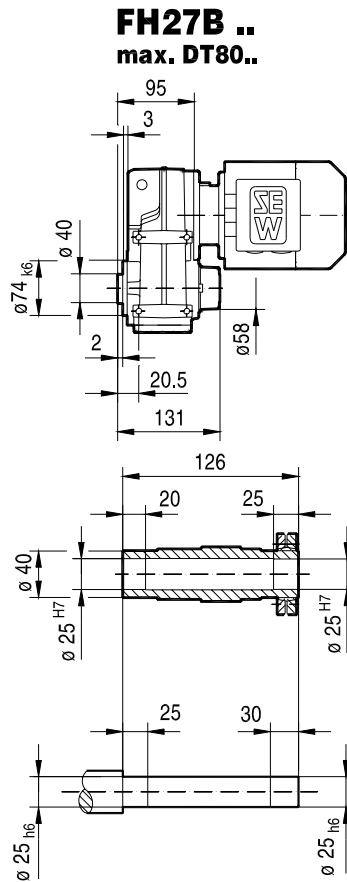
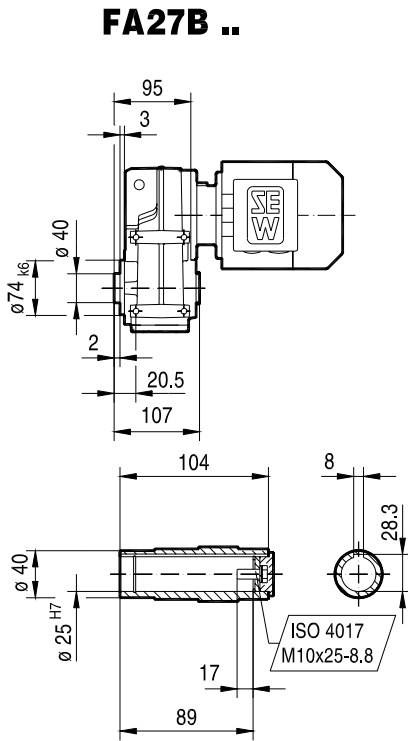
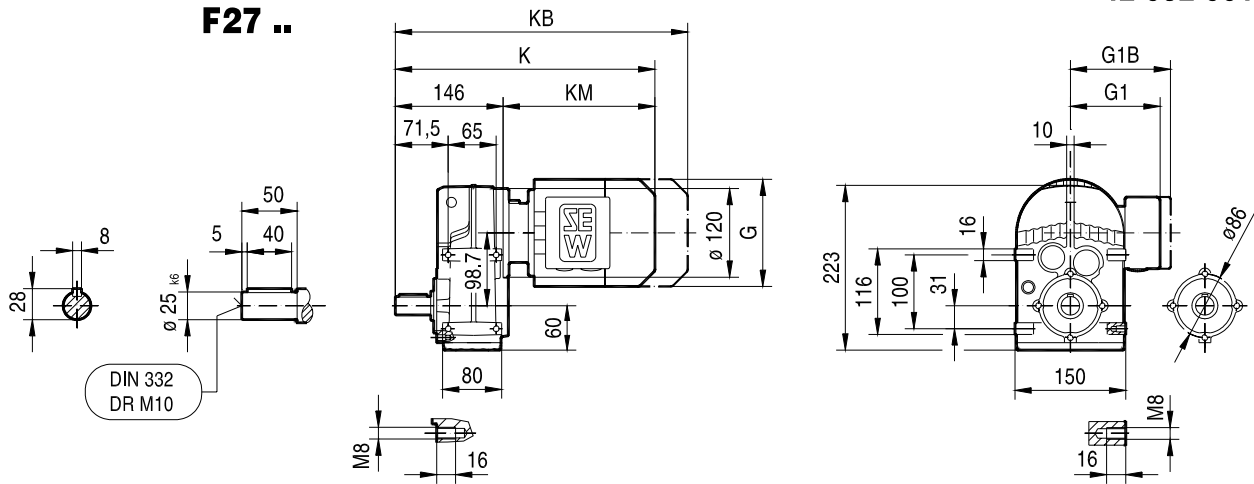
Your advantage

The compact and space-saving design of the gear unit housing is accomplished by means of FEM calculation methods. This method results in less required installation space in the system.

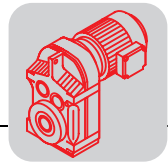


3 Dimension Drawings F..27

42 032 001

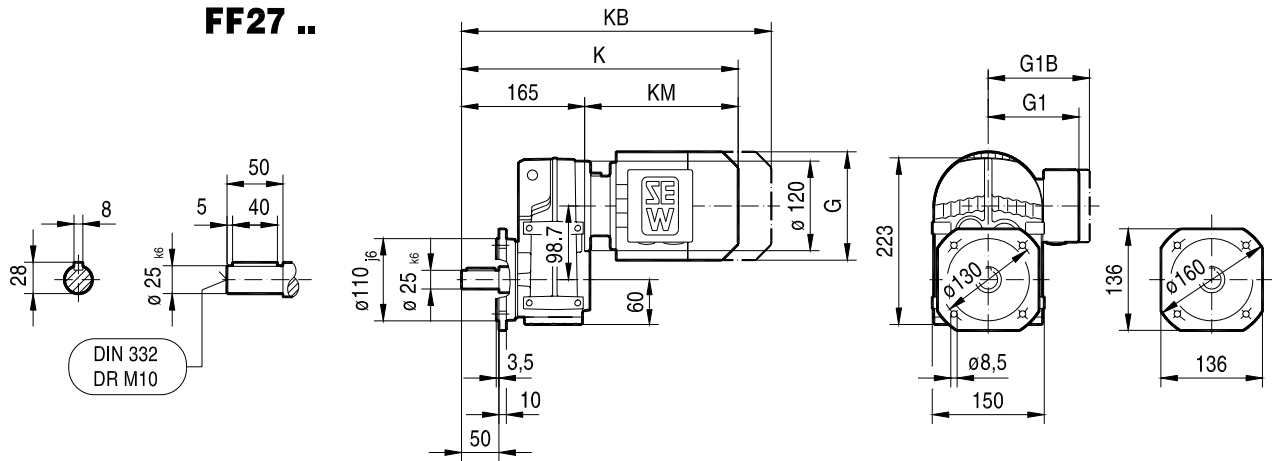


	DR63..	DT71D	DT80..	DT90..					
G (AC)	132	145	145	197					
G1 (AD)	105	122	122	154					
G1B	105	127	127	161					
K	337	352	402	422					
KB	392	416	466	507					
KM (LB)	191	206	256	276					

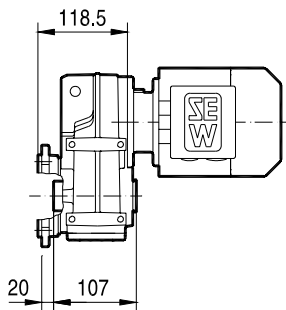


42 033 001

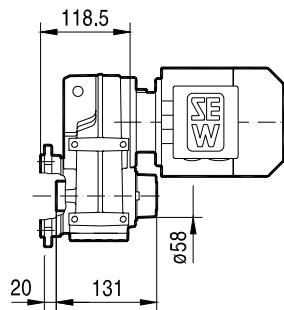
FF27 ..



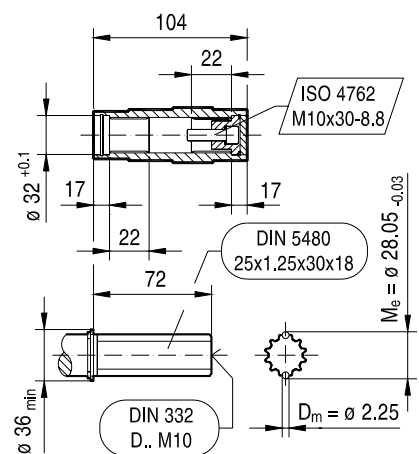
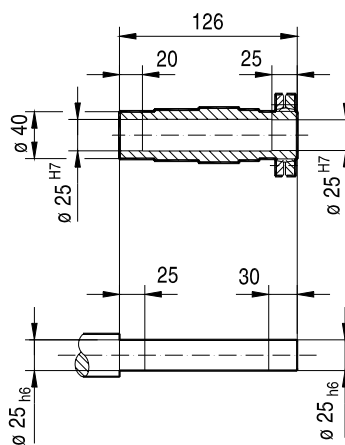
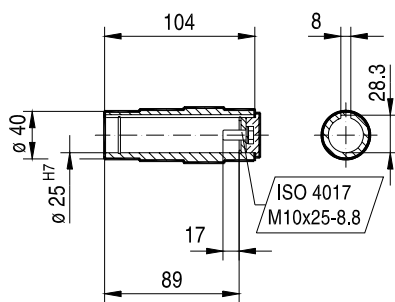
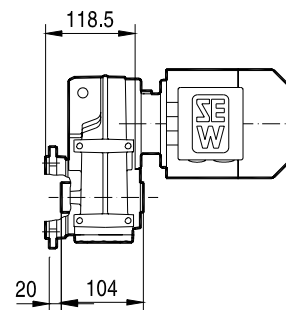
FAF27 ..



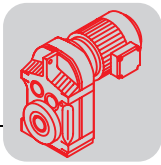
**FHF27 ..
max. DT80..**



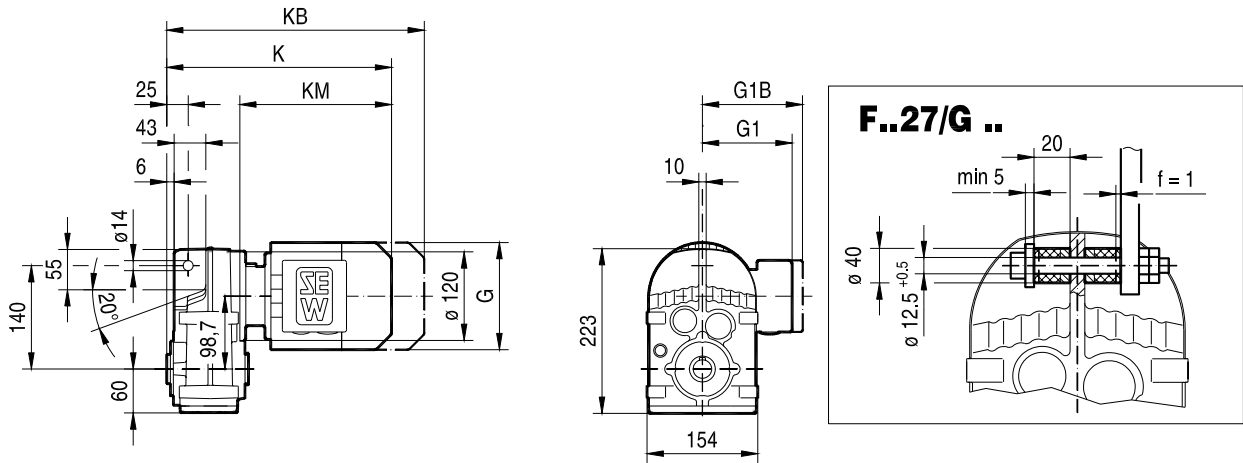
FVF27 ..



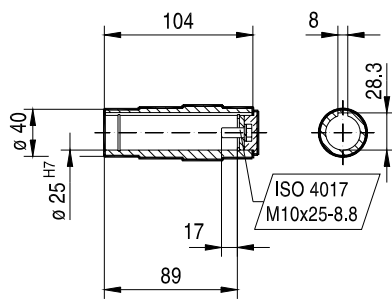
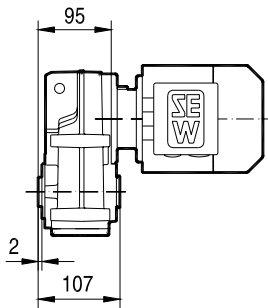
	DR63..	DT71D	DT80..	DT90..						
G (AC)	132	145	145	197						
G1 (AD)	105	122	122	154						
G1B	105	127	127	161						
K	356	371	421	441						
KB	411	435	485	526						
KM (LB)	191	206	256	276						



42 034 001

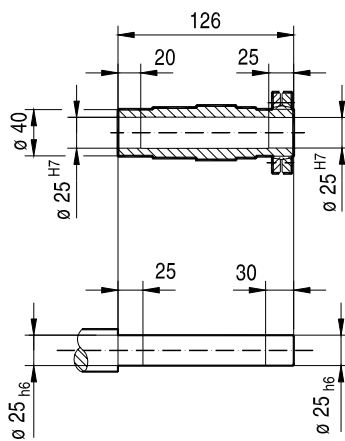
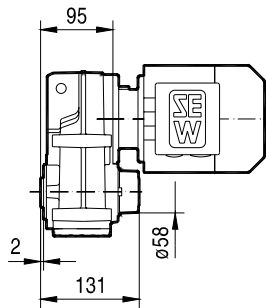


FA27 ..

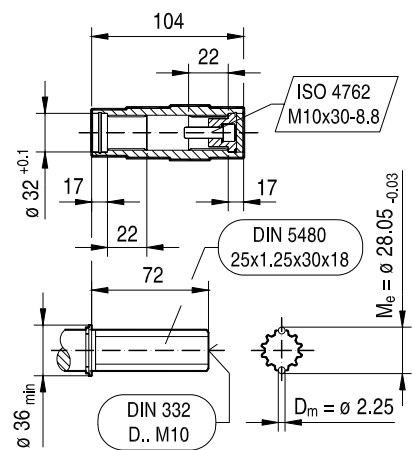
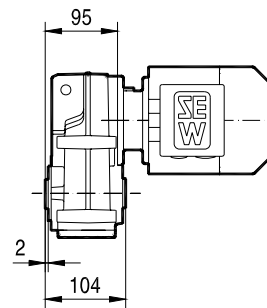


FH27 ..

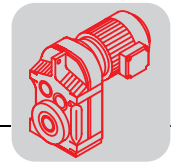
max. DT80..



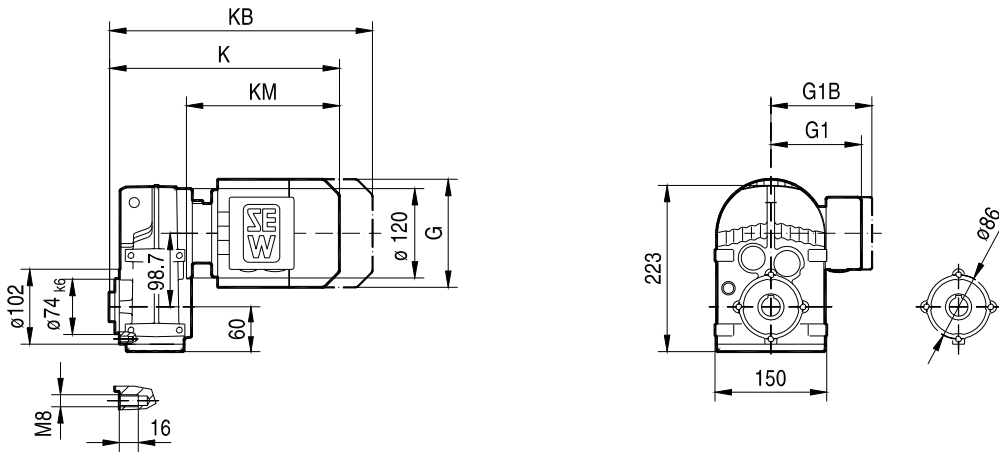
FV27 ..



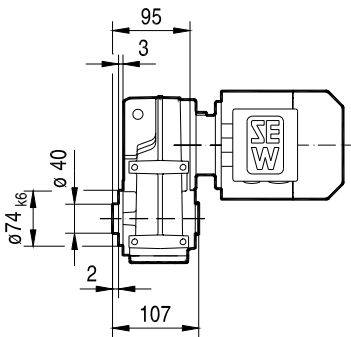
	DR63..	DT71D	DT80..	DT90..						
G (AC)	132	145	145	197						
G1 (AD)	105	122	122	154						
G1B	105	127	127	161						
K	286	301	351	371						
KB	341	365	415	456						
KM (LB)	191	206	256	276						



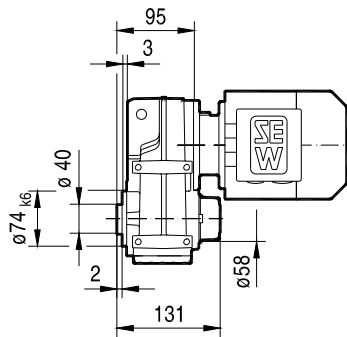
42 035 001



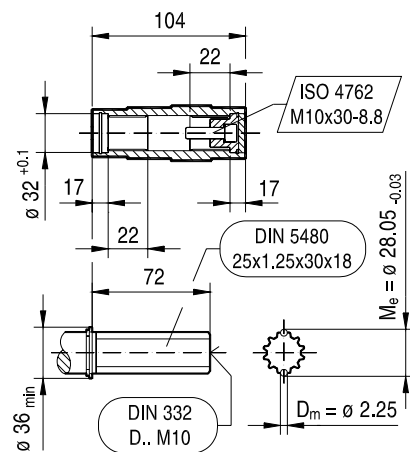
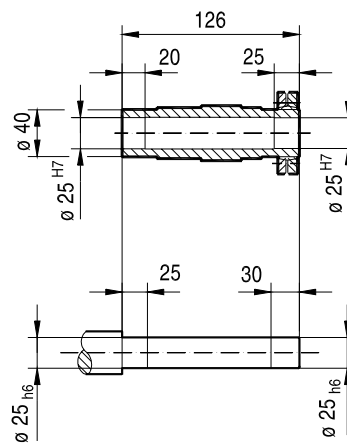
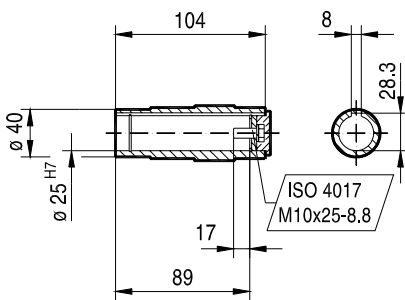
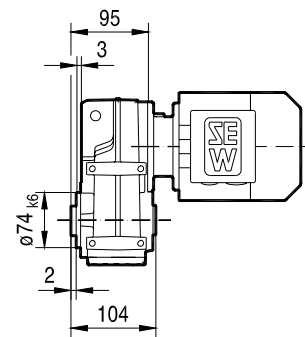
FAZ27 ..



FHZ27 ..
max. DT80..



FVZ27 ..



	DR63..	DT71D	DT80..	DT90..						
G (AC)	132	145	145	197						
G1 (AD)	105	122	122	154						
G1B	105	127	127	161						
K	286	301	351	371						
KB	341	365	415	456						
KM (LB)	191	206	256	276						

SEW-EURODRIVE GmbH & Co · P.O. Box 3023 · D-76642 Bruchsal/Germany · Phone +49-7251-75-0
Fax +49-7251-75-1970 · <http://www.sew-eurodrive.com> · sew@sew-eurodrive.com

SEW
EURODRIVE

