



FLOW RANGE
to 580 GPM
(132 m³/h)



PRESSURE
to 250 PSI
(17 BAR)



TEMPERATURE
-40°F to +350°F
(-40°C to +180°C)



VISCOSITY
28 to 25,000 SSU
(1 to 5,500 cSt)

MOTOR SPEED PRODUCT LINE

CAST IRON CONSTRUCTION



FEATURES & BENEFITS

- The most compact gear pump series available to fit tight space constraints
- High speed operation for the most economical pump option for thin to moderate viscosity applications
- Vertical mounting options to further reduce the unit footprint

TYPICAL APPLICATIONS

- Refined Fuels
- Lube Oils
- Rotating Equipment Lubrication
- Mobile Pump Carts
- Glycols
- Pipeline Sampling
- Isocyanates

PERFORMANCE

| MODELS | | | | | SPECIFICATIONS | | | | |
|-------------|-----------------|-----------------|-----------------|-----------|----------------|-----|-------------------|----------------|--------|
| Motor Mount | | Foot Mount | Bracket Mount | | Performance | | | Standard Ports | |
| Lip Seal | Mechanical Seal | Mechanical Seal | Mechanical Seal | Mag Drive | Max Speed, RPM | GPM | m ³ /h | Size, Inches | Type |
| G75 | G475 | G4195 | G495 | — | 1750 | 8 | 1.8 | 1 | NPT |
| GG75 | GG475 | GG4195 | GG495 | GG895 | 1750 | 10 | 2.3 | 1 | NPT |
| H75 | H475 | H4195 | H495 | — | 1750 | 15 | 3.4 | 1.5 | NPT |
| HJ75 | HJ475 | HJ4195 | HJ495 | HJ895 | 1750 | 20 | 4.5 | 1.5 | NPT |
| HL75 | HL475 | HL4195 | HL495 | HL895 | 1750 | 30 | 6.8 | 1.5 | NPT |
| — | — | AS4195 | AS495 | AS895 | 1750 | 55 | 12 | 2.5 | NPT |
| — | — | AK4195 | AK495 | AK895 | 1750 | 85 | 19 | 2.5 | NPT |
| — | — | AL4195 | AL495 | AL895 | 1750 | 115 | 26 | 3 | NPT |
| — | — | KE4195* | — | — | 1750 | 150 | 34 | 4 | Flange |
| — | — | KKE4195* | — | — | 1750 | 205 | 47 | 4 | Flange |
| — | — | LQE4195* | — | — | 1150 | 235 | 53 | 4 | Flange |
| — | — | LSE4195* | — | — | 1150 | 350 | 80 | 4 | Flange |
| — | — | Q4195 | — | — | 750 | 460 | 104 | 6 | Flange |
| — | — | QS4195 | — | — | 640 | 580 | 132 | 6 | Flange |

Refer to Appendix B on page 33 for more information on seals and porting.

* KE, KKE, LQE and LSE sizes have a foot mount and flange for M-Drive Bracket.

PORTING

- Opposite (180°)
- NPT
- Flanged (ANSI or DIN Compatible)
- High Pressure Flanges

SEALING

- Lip Seal
- Behind the Rotor Seal
- Balanced Seal
- Sealless Mag Drive

MOUNTING

- Motor Mount
- Foot Mount
- Vertical Mount

DRIVES

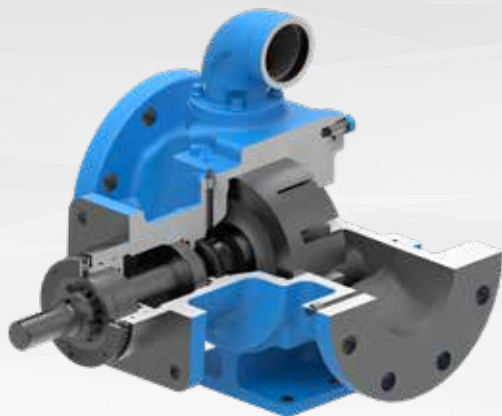


Refer to Appendix A on page 32 for more information on drives.



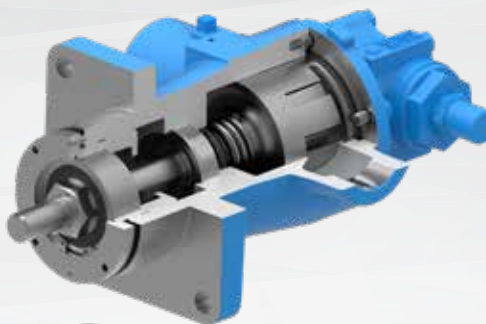
DID YOU KNOW?

Viking was the first to develop a commercially available mag drive internal gear pump over 30 years ago. Since then, Viking has built and installed thousands of mag drive pumps all over the world. Many of those original installations are still in operation today, which speaks to the durability of this design.



4195 (foot mount, behind the rotor seal)

- Behind the rotor mechanical seal with antifriction bracket bearing for motor speed operation
- Optional balanced seal for high inlet pressures
- NPT or Class 125 flange ports with optional Class 250 or DIN PN-25/40 flanges



(Pump shown mounted to a motor)

495 (bracket mount, behind the rotor seal)

- Flanged bracket for bell housing to close couple NEMA C or IEC B-14 motors
- Eliminates shaft alignment, easy mounting on equipment frames
- KE- LSE 4195 models have both foot for long-couple and bracket flange for close coupling

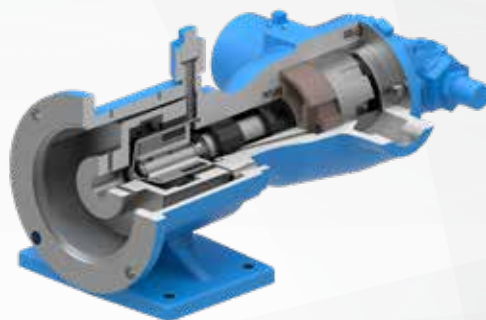


(Pump shown mounted to a motor)

475 (motor mount, behind the rotor seal)

75 (motor mount, lip seal)

- NEMA C-face mount for easy installation and a small footprint
- Simplified rotor retention system, economical for medium duty applications
- IEC mount option available



895 (sealless mag drive)

- Eliminates the shaft seal to provide the highest level of liquid and vapor containment
- All liquid and vapor is hermetically sealed in the pump
- Used especially for hazardous and difficult-to-seal liquids
- Optional high pressure canister for inlet pressures up to 2,250 PSI (155 BAR)



Note: Product images may not reflect standard construction.



FLOW RANGE
to 115 GPM
(27 m³/h)



PRESSURE
to 250 PSI
(17 BAR)



TEMPERATURE
0°F to +350°F
(-20°C to +180°C)



VISCOSITY
28 to 25,000 SSU
(1 to 5,500 cSt)

MOTOR SPEED PRODUCT LINE

STEEL EXTERNALS CONSTRUCTION



FEATURES & BENEFITS

- Close coupled to fit tight space constraints with vertical mount options for reduced unit footprint
- High speed operation for economical steel pump offering
- High working pressures for compressor lubrication and pipeline sampling applications
- Class 300 flanges standard on all sizes and models

TYPICAL APPLICATIONS

- Pipeline Sampling
- Compressor Lubrication
- Fuels
- Lube Oils

PERFORMANCE

| MODELS | | | SPECIFICATIONS | | | | |
|-----------------|-----------------|-----------|----------------|-----|-------------------|----------------|--------|
| Foot Mount | Bracket Mount | | Performance | | | Standard Ports | |
| Mechanical Seal | Mechanical Seal | Mag Drive | Max Speed, RPM | GPM | m ³ /h | Size, Inches | Type |
| GG4193 | GG493 | GG893 | 1750 | 10 | 2.3 | 1 | Flange |
| HJ4193 | HJ493 | HJ893 | 1750 | 20 | 4.5 | 1.5 | Flange |
| HL4193 | HL493 | HL893 | 1750 | 30 | 6.8 | 1.5 | Flange |
| AS4193 | AS493 | AS893 | 1750 | 55 | 12 | 3 | Flange |
| AK4193 | AK493 | AK893 | 1750 | 85 | 19 | 3 | Flange |
| AL4193 | AL493 | AL893 | 1750 | 115 | 26 | 3 | Flange |

Refer to Appendix B on page 33 for more information on seals and porting.

PORTING

- Opposite (180°)
- Flanged (ANSI or DIN Compatible)

SEALING

- Behind the Rotor Seal
- Balanced Seal
- Sealless Mag Drive

MOUNTING

- Motor Mount
- Foot Mount
- Vertical Mount

DRIVES

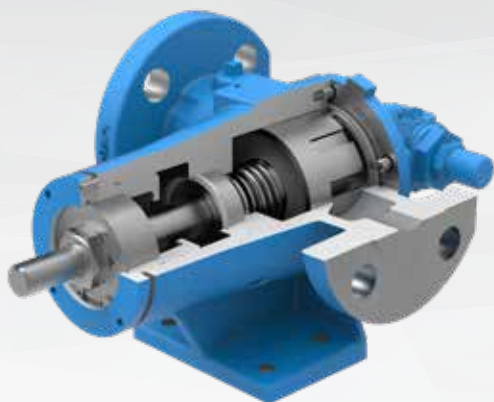


Refer to Appendix A on page 32 for more information on drives.



DID YOU KNOW?

Viking's foundries convert over 3,000,000 pounds of raw materials each year into pump parts and other cast products. Steel parts, like those used in this series, are produced in the Viking Alloys Foundry along with stainless steel. Cast and Ductile Iron are produced at Viking's Iron Foundry.



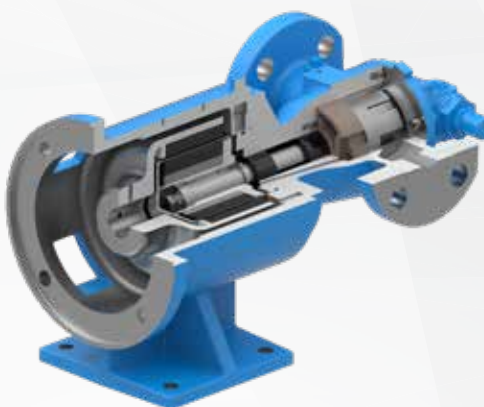
4193 (foot mount, behind the rotor seal)

- Behind the rotor mechanical seal with antifriction bracket bearing for motor speed operation
- Optional balanced seal for high inlet pressures
- Class 300 flange ports
- Conforms to API 676, with exceptions



493 (bracket mount, behind the rotor seal)

- Flanged bracket for bell housing to close couple NEMA C or IEC B-14 motors
- Eliminates shaft alignment, easy mounting on equipment frames



893 (sealless mag drive)

- Eliminates the shaft seal to provide the highest level of liquid and vapor containment
- All liquid and vapor is hermetically sealed in the pump
- Used especially for hazardous and difficult-to-seal liquids
- Optional high pressure canister for inlet pressures up to 2,250 PSI (155 BAR)



Note: Product images may not reflect standard construction.



FLOW RANGE
to 75 GPM
(17 m³/h)



PRESSURE
to 200 PSI
(14 BAR)



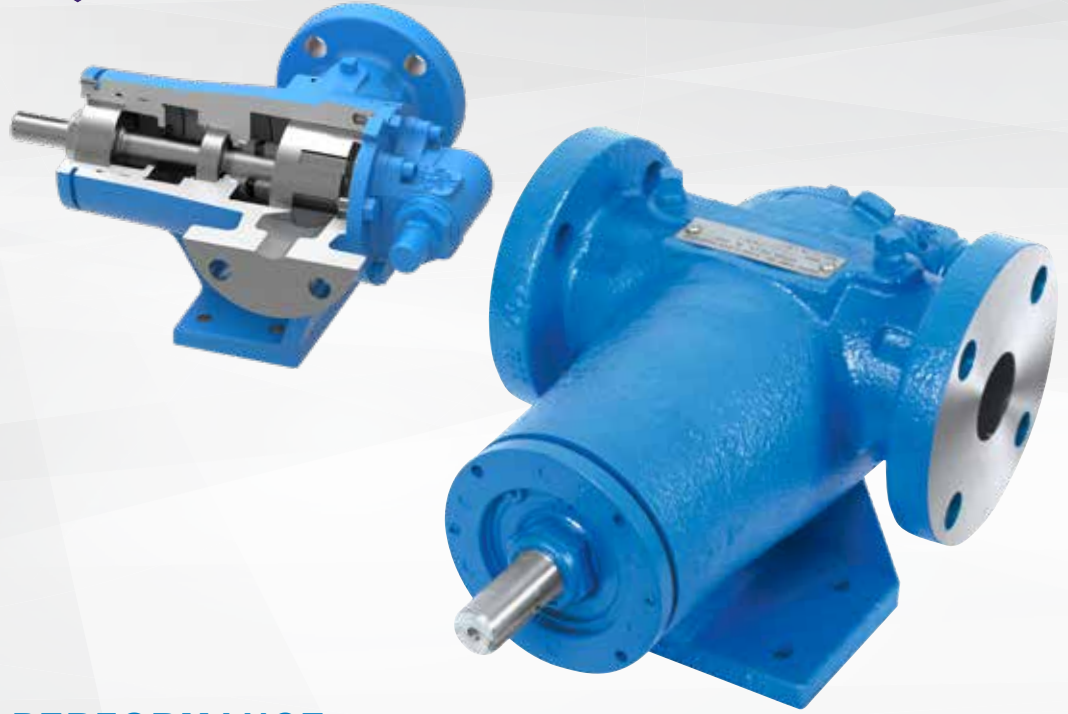
TEMPERATURE
0°F to +350°F
(-20°C to +180°C)



VISCOSITY
28 to 25,000 SSU
(1 to 5,500 cSt)

MOTOR SPEED PRODUCT LINE

STAINLESS STEEL CONSTRUCTION



FEATURES & BENEFITS

- For corrosion resistance over a wider pH range
- Non-galling gear materials standard for handling thin liquid applications
- Compact gear pump series to fit tight space constraints

TYPICAL APPLICATIONS

- Water-Based Liquids
- Acids & Caustics
- Additives
- General Chemical

PERFORMANCE

| MODELS | | SPECIFICATIONS | | | | |
|-----------------|---------------|----------------|-----|-------------------|----------------|--------|
| Foot Mount | Bracket Mount | Performance | | | Standard Ports | |
| Mechanical Seal | Mag Drive | Max Speed, RPM | GPM | m ³ /h | Size, Inches | Type |
| GG4197 | GG897 | 1750 | 10 | 2.3 | 1 | Flange |
| HJ4197 | HJ897 | 1750 | 20 | 4.5 | 1.5 | Flange |
| HL4197 | HL897 | 1750 | 30 | 6.8 | 1.5 | Flange |
| AS4197 | AS897 | 1150 | 35 | 8 | 3 | Flange |
| AK4197 | AK897 | 1150 | 50 | 11 | 3 | Flange |
| AL4197 | AL897 | 1150 | 75 | 17 | 3 | Flange |

Refer to Appendix B on page 33 for more information on seals and porting.

PORTING

- Opposite (180°)
- Flanged (ANSI or DIN Compatible)

SEALING

- Behind the Rotor Seal
- Balanced Seal
- Sealless Mag Drive

MOUNTING

- Motor Mount
- Foot Mount

DRIVES



Refer to Appendix A on page 32 for more information on drives.



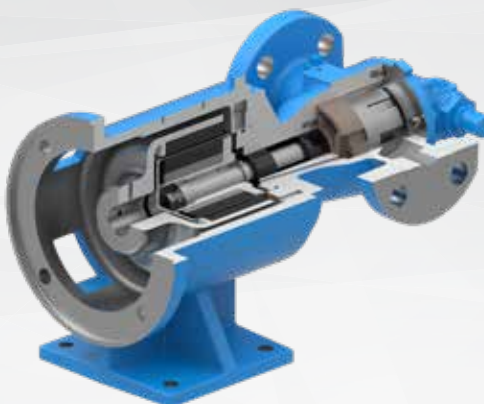
DID YOU KNOW?

Viking pumps have been installed on all 7 continents, including Antarctica.



4197 (foot mount, behind the rotor seal)

- Behind the rotor mechanical seal with antifriction bracket bearing for motor speed operation
- PTFE wedge-type mechanical seal standard for corrosive liquids
- Class 150 flange ports



897 (sealless mag drive)

- Eliminates the shaft seal to provide the highest level of liquid and vapor containment
- All liquid and vapor is hermetically sealed in the pump
- Used especially for hazardous, corrosive and difficult-to-seal liquids
- Optional high pressure canister for inlet pressures up to 2,250 PSI (155 BAR)



Note: Product images may not reflect standard construction.