



Safety

Laron prioritizes safety, aiming for a zero-incident workplace. To achieve this, the company has developed a process-driven safety management program, including a structured injury and illness prevention strategy.

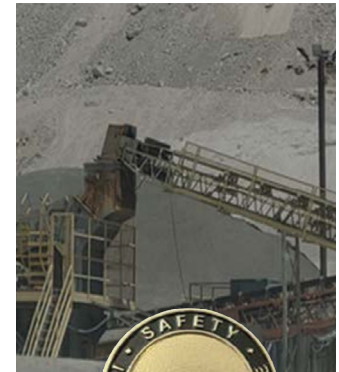
The program is built on key principles:

- Leadership from management
- Active worker participation
- Hazard identification
- Hazard prevention
- Continuous education
- Training
- Regular evaluation and improvement

Laron employs a dedicated team of safety professionals ensuring compliance with state and federal regulations.

Core elements of Laron's safety program include:

- Training topics that cover:
 - Energy isolation
 - Confined spaces
 - Working at heights
 - Overhead loads
 - Hazard communication
 - Personal protective equipment (PPE)
- Regular audits that assess safety procedures and track accomplishments
- Resource allocation for injury prevention is reviewed and optimized
- All field service representatives are MSHA certified and Laron is a preferred ISN vendor



Field Service

- Mining equipment rebuilds: Crusher components, pan feeders, and ball mills
- Emergency service repair
- Process piping
- HDPE services
- Specialized services:
 - Custom-designed, in-house built journal squirrel machining tool
 - Machining of hydro-unit generator shaft in thrust collar
 - Emergency removal, refurbishment, and reinstallation of primary crushing system
 - Laser tracking/scanning
 - Portable CMM arm
 - Field services: mechanical, machining, welding, engineering, inspection, and predictive maintenance
 - Removal of seized studs from reactor coolant pump housing
 - Turnkey design, fabrication, machining, and load testing of turbine shell rotorator for nuclear power station main power turbine
 - Construction of two LNG plants
 - Re-tubing of solar power plant

Mechanical Repair

LARON is an Authorized Repair Facility for Crusher components and gearboxes of various OEMs.

- Crusher component rebuilds (countershaft boxes, crusher head, bowls, Spyder, mantle, main shaft, eccentric) FLS and Sandvick Authorized Repair Facility
- Gearboxes (rebuilds, new components, complete overhauls)
 - Reduction and angle drive repair
 - Planetary gear sets
 - Countershaft boxes
 - Gear inspection and testing
 - SEW Authorized Repair Facility
- Pumps (repairs, new components, complete overhauls)
 - Centrifugal pump, Screw pump
 - Positive displacement piston pump
 - Blower and compressor repair
 - Extruder repair
- Tear down and inspection reports with repair options
- Reverse engineering of old parts with or without current drawings

Shop Machining Capabilities

- Vertical boring mills to 207" diameter, 128" under tool holder
- CNC vertical boring mills to 156" diameter, 120" under tool holder
- Lathes to 70" swing over ways, 55" swing over carriage, 220" between centers 456" part length possible with extended bed
- CNC horizontal boring mill, 3 axis, 5" spindle X=92", Y+81, Z=67"
- Horizontal boring mills to 7 7/8" Spindle, X=576", =144", Z=70"
- Blanchard grinder to 60" diameter
- Shop fabrication (piping spools, structural-catwalk, platforms, safety railings)
- Engineering solutions
- Laser tracking



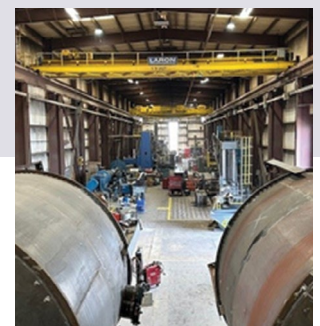
Crusher main shaft and mantle assembly



Horizontal lathe machining a crusher main shaft

New Sales

- Crusher components Gear boxes
- Pumps
- Electric Motors
 - Low/Medium Voltage, AC/DC, synchronous, wound rotor, explosion proof and specialty motors
US-MOTORS • TECO/WESTINGHOUSE • SIEMENS
TOSHIBA • TATUNG • ABB/ BALDOR/ RELIANCE
WEG • LEESON • GE • LAFERT
- Blowers
- Bearing kits
- VFDs



Kingman, AZ Shop Floor



Locations:

Kingman, AZ
Phone: 928-757-8424

Tucson, AZ
Phone: 520-887-4816

Phoenix, AZ
Phone: 602-254-5491