

Field Services

Process Piping:

- Process piping repairs (Structural and Code Welding)
- New process piping spool installations
- (Exotic Metals EX, P91, P22, Inconel, etc.)
- ASME code sections I, II, IV, V, VIII, IX, and B31.1
- Attenuator repair and installation

QC Capabilities:

- Certified weld inspector (CWI) on staff
- QC personnel on staff
- Over 300 ASME approved welding procedures (Welders are certified to ASME Section IX and/or AWS D1.1)

Welding Repairs:

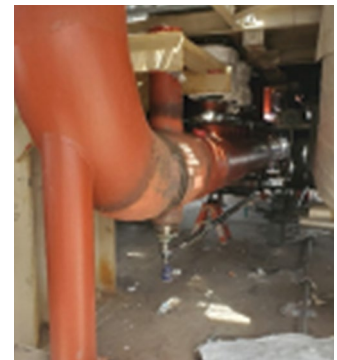
- Valve installation and replacement
- Pressure vessel repair
- HRSG repairs
- Boiler tube repair and new installations
- Kettle boiler and heat exchanger repairs
- Field fabrication

Mechanical Services:

- Fan balancing
- Vibration analysis
- Precession alignments
- Laser tracking/scanning
- Motor and gearbox installation
- Pump installations/Pump skid fabrication
- Manpower support (millwright, welding, pipe-fitting)
- Installation of new structure and equipment
- Field machining
- Hydraulic repairs



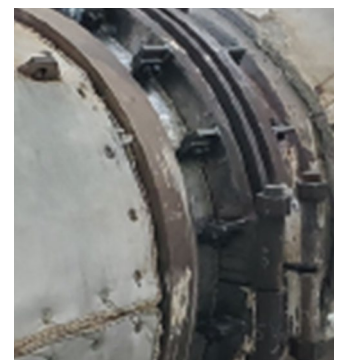
Attenuator Replacement



Main Steam Header Replacement



Circ Water Pump Replacement



Expansion Joint Repair



165,000 Square Foot Facility

Shop Services:

- Gearbox (Disassemble, Clean, Inspection) and repair
- Pump (Disassemble, Clean, Inspection) and repair



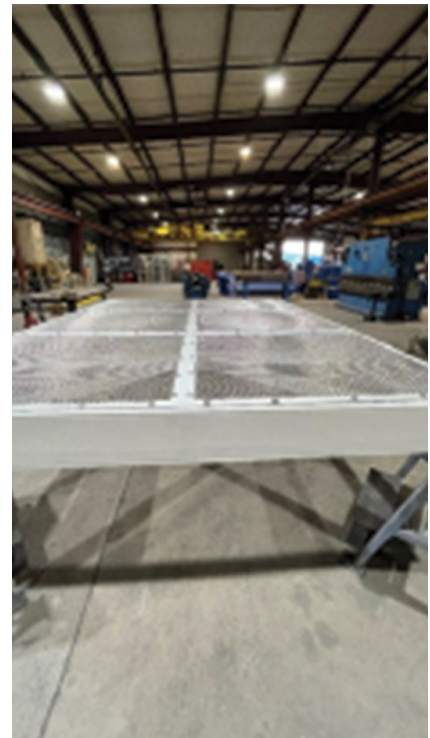
Gearbox DCI/Repair

NEW EQUIPMENT SALES

- Gearboxes
- Motors
- Electrical
- Bearings and Seals
- Miscellaneous Parts

Shop Machining Capabilities:

- Vertical boring mills to 207" diameter, 128" under tool holder
- CNC vertical boring mills to 156" diameter, 120" under tool holder
- Lathes to 70" swing over ways, 55" swing over carriage, 220" between centers 456" part length possible with extended bed
- CNC horizontal boring mill, 3 axis, 5" spindle X=92", Y+81, Z=67"
- Horizontal boring mills to 7 7/8" spindle, X=576", Y=144", Z=70"
- Blanchard grinder to 60" diameter
- Shop fabrication (piping spools, structural-catwalk, platforms, safety railings) Engineering solutions
- Laser tracking/scanning
- Portable CMM arm



Trash Screen Fabrication

Locations:

Kingman, AZ
Phone: 928-757-8424

Tucson, AZ
Phone: 520-887-4816

Phoenix, AZ
Phone: 602-254-5491